



Price excludes: Fencing, Landscaping, Concrete pavers, Planter boxes, Decking

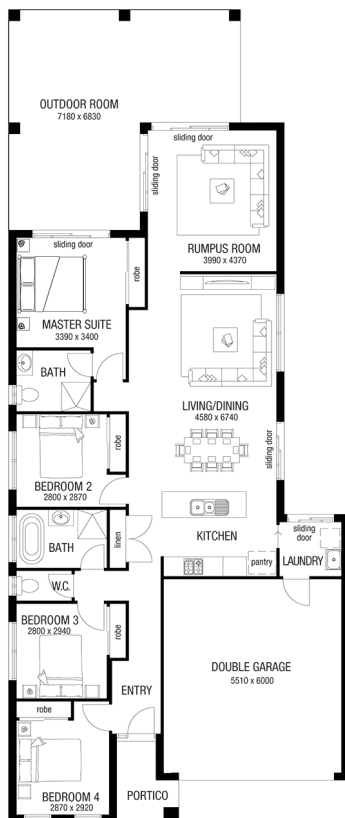
FIXED PRICE

## \$741,000\*

LOT 5231 PROPOSED ROAD  
ELARA  
MARSDEN PARK

FELIX 24  
COASTAL FACADE

BLOCK SIZE | 375M<sup>2</sup>



FIXED PRICE PACKAGE INCLUDES:

THE FELIX 24 WITH COASTAL FACADE  
BUILT TO OUR INDUSTRY LEADING  
BASE SPECIFICATIONS AND LAND,  
PLUS:

- ✓ Fixed site cost and BASIX
- ✓ 25 year structural guarantee
- ✓ Concrete driveway and path
- ✓ Overhead cupboards to kitchen
- ✓ Caesarstone benchtops to kitchen
- ✓ Current promotion
- ✓ And much more.....

**FREEDOM  
BONUS**

**FUJITSU**  
**DUCTED AIR-CON  
INCLUDED  
AT NO COST!\***

**1300 METRICON**  
[www.metricon.com.au](http://www.metricon.com.au)

1300 METRICON

**FREEDOM**

**m**  
metricon

Images may include upgrade items and may depict fixtures, finishes and features not supplied by Freedom by Metricon such as landscaping, paths and fencing. Accordingly any prices in this flyer do not include the supply of these items. Price is based on Metricon's Freedom specification and standard inclusions. Package price excludes external lighting, telephone service, customer account opening fees, stamp duty on land, legal fees and conveyancing costs including titles and property report. Floor plan is a representation of a Traditional façade unless otherwise stated. For detailed pricing and inclusions talk to a Metricon Sales Consultant. Land supplied by developer. Land prices and availability are subject to change without notice. All home and land packages are subject to developer approval. Metricon reserves the right to alter the images or descriptions without notice. # For details on our 25 year structural guarantee visit [www.metricon.com.au/terms/structural-guarantee](http://www.metricon.com.au/terms/structural-guarantee). Package Printed Date: 18/06/2017. Build region: Sydney