



# THE ESTATE



# NOW SELLING!



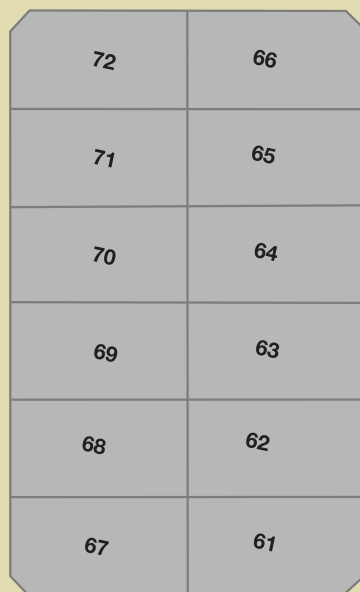
## HOUSE TYPE KEY:

- Bentley
- Ashford
- Cabarita
- Lexington

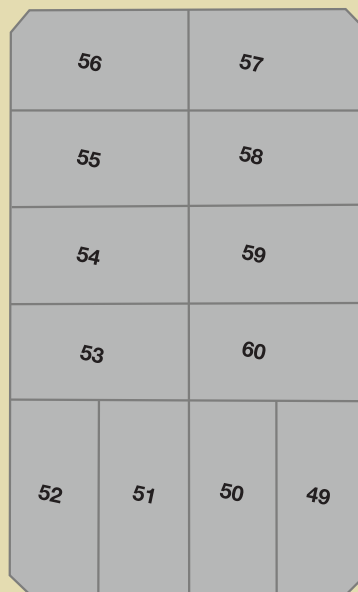
PLEASE NOTE: Land size is subject to change pending DA approval & land registration

Key: Available  
Proposed

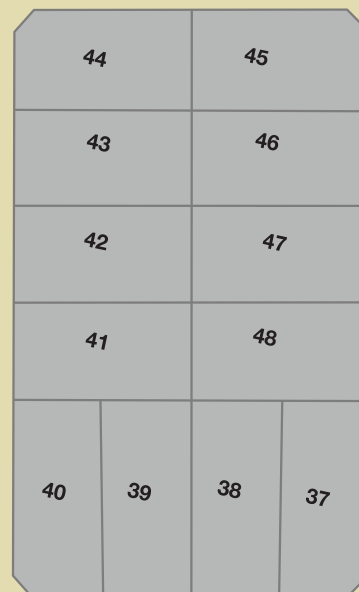
OUTBACK STREET



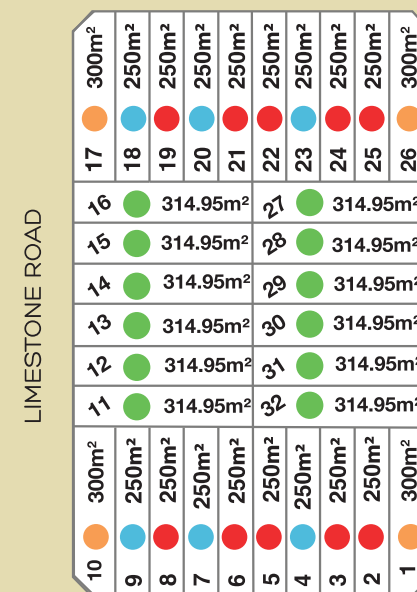
LONGMEADOW PARKWAY



OUTBACK STREET



LONGMEADOW PARKWAY



LIMESTONE ROAD

TIMBERCREST STREET



[www.aushouseandland.com.au](http://www.aushouseandland.com.au) | 1300 188 698 | The House + Land Package Specialists

Visit [www.aushouseandland.com.au](http://www.aushouseandland.com.au) to view which lots are available!

# Q & A

### General Information

**Q) Where is Summerview Estate located?**

Summerview Estate is a new residential development within the rapidly growing suburb of Box Hill, 50 min from Sydney CBD.

**Q) How many properties in the subdivision?**

Summerview Estate is a development of over 250 proposed allotments comprising large, level to undulating building lots and feature a variety of house and land package options on each lot.

**Q) When is registration expected?**

The developer is aiming for registration approximately mid 2018, subject to stakeholders approvals.

### Home Details

**Q) When will homes be available for sale?**

October 2017

**Q) Who is the builder?**

There are a variety of specialty home builders that have been invited to build on the Estate with a number of varied designs to suit your specific needs and budget.

**Q) What are the home sizes?**

The home sizes range from 16 – 24 squares.

**Q) What are the prices of the homes?**

Please refer to price list for details.

**Q) If I am interested in purchasing what do I do?**

Call 1300 188 698 to discuss purchase procedure.

### Land Details

**Q) What are the land sizes?**

Currently available are 250sqm to 314.95sqm lots.

**Q) What is the price of the land?**

For prices call 1300 188 698.

**Q) When is land ready to build?**

Upon registration

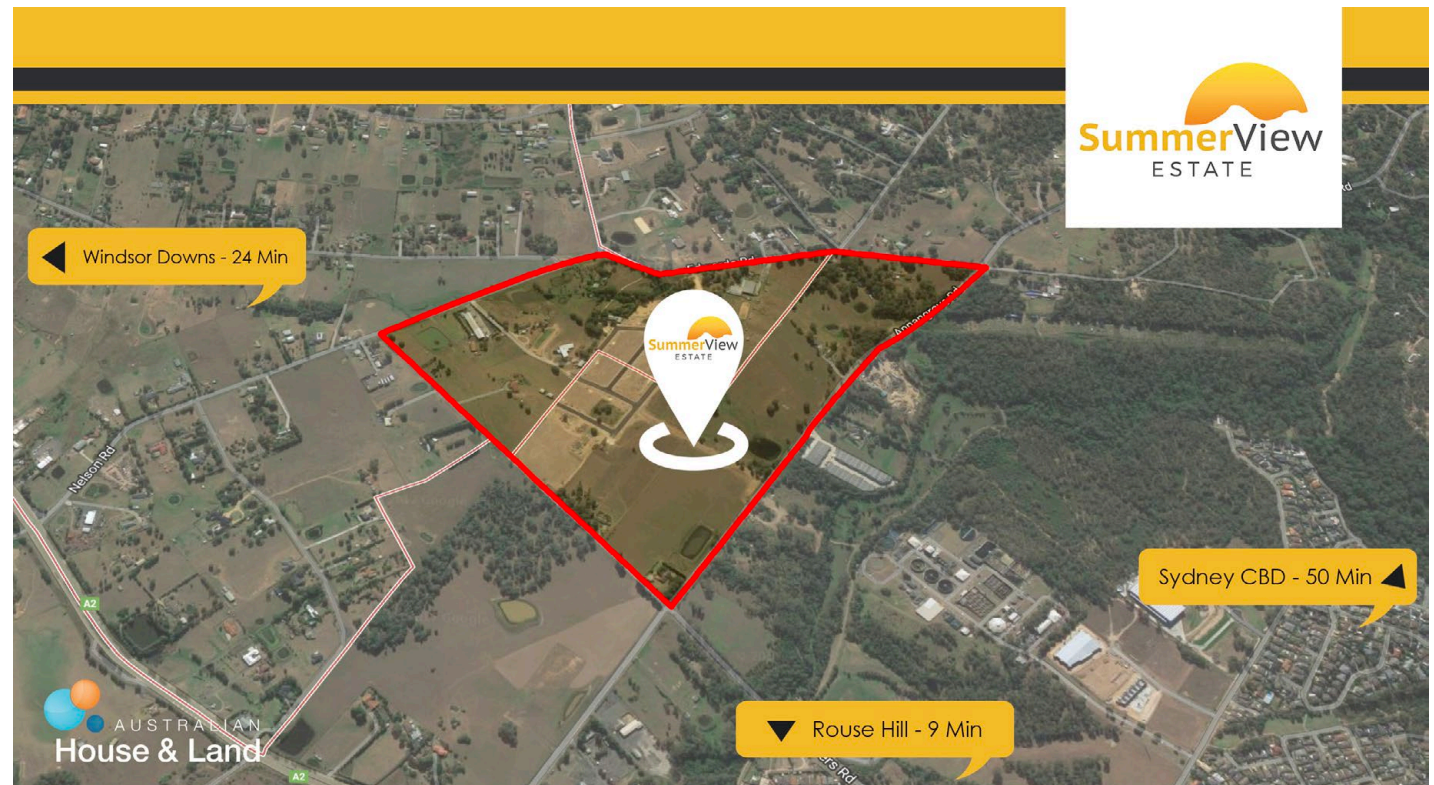


## LOCATION

Summerview Estate is a new residential development within the rapidly growing suburb of Box Hill being only 50 min from Sydney CBD.

The estate has over 250 proposed allotments comprising of large, level to undulating building lots. With each of these lots you have the option to either purchase the land and build your preferred design, or, to purchase a complete turn key house and land package with **Australian House & Land** who feature up to 3 different options for you to choose from on each lot in Summerview Estate. Your package options have been carefully selected by Australian House & Land to best utilise your land and at the same time giving you the option to choose your house design to best suit your lifestyle. These designs range from Single Storey to Double Storey Duplexes with 4 bedrooms and have single garages.

The Estate offers easy access to the A2 motorway and is located in proximity to schools, local shops, restaurants and to public transport.



## TRANSPORT & SERVICES



Driving to Schofields Train Station from Summerview Estate takes approximately 13 minutes.

Schofields railway station is located on the Richmond line. It is served by Sydney Trains T1 Western and T5 Cumberland line services. Schofields station originally opened in 1870, with its remodeling coming to completion on 29 October 2011. The station offers 230 parking spaces, 40 bicycle racks are available. A “Kiss-and-ride” zone is located parallel to the bus interchange. As part of the relocation, a shared pedestrian and cycling path was built between the former station to the current site and a footbridge was constructed at the site of the former station to replace the pedestrian level crossing.

Sydney Metro Northwest is delivering eight new railway stations and 4000 commuter car parking spaces to Sydney’s growing North West. Trains will run every four minutes in the peak, that’s 15 trains an hour. Customers won’t need a timetable, they will just turn up and go.

Bus services operate through the estate, Route 746 travels directly through the suburb of Box Hill from Riverstone and travels towards Rouse Hill.

For more details visit the NSW Transport website  
<http://www.transportnsw.info/>



Schofields Train Station - 2011 Remodel



Bus Route Map - Bus line 746 through Summerview Estate





## AREA PROFILE

### Education:

Summerview Estate has access to a number of primary and secondary schools including:

- **Vineyard Public School**, Years K-6 (8 min)
- **Rouse Hill Public School**, Years K-6 (8 min)
- **Rouse Hill High School**, Years 7-12 (9 min)

### Recreation:

**The Fiddler** is located on Windsor Rd & Commercial Rd, Rouse Hill. Whether you're looking for large communal dining options with friends or family, or smaller, more intimate spaces dripping with ambience, you're sure to find your perfect spot amongst The Fiddler's sprawling network of bar and dining areas (7 min)

Looking to shop? **Rouse Hill town centre** on Windsor Rd & White Hart Dr is the perfect place to find everything you could need. Rouse Hill Town Centre combines the traditional values and streetscape of a contemporary market town with the latest fashion, homewares, dining, community services and lifestyle choices. With over 230 specialty stores including Woolworths, Coles, Big W, Target and a Reading Cinema, you're bound to find what you need in the convenience of the Town Centre. (8 min)

**Rouse Hill picnic area and playground** makes for a perfect family day out. When the kids have had enough of monkeying around on the swings, slides, maze, playhouses and rope bridge, they can ride their bikes or rollerblade around the paths, play ball games or relax at the picnic shelters while their lunch cooks on the barbecue. (7 min)

At **The Australian Brewery**, you can find boutique craft beers brewed on the premises, an expansive sporting and games hub, private function rooms, all weather kids play areas and a large bistro serving fresh local produce and daily food specials. (2 min)



## AREA PROFILE *(Continued)*

### **Local Shops:**

Keeping it local in Box Hill you will find close by to Summerview Estate:

- IGA Supermarket (2 min)
- Aldi Supermarket (4 min)
- Coles / Woolworths (8 min)

### **Other Shops:**

- Rouse Hill town centre is where you will find a great mix of stores such as Woolworths, Big W, retail stores, food court, Banks, ATMs and more. (8 min)
- Rouse Hill Bunnings (2 min)
- The Australian Brewery (2 min)
- Regal Gardens Retail Nursery (3 min)
- Rouse Hill Landscape Supplies (5 min)

### **Healthcare:**

A large range of medical professionals and medical centres are located in close proximity to Summerview estate, Only 7 minutes from the Estate is **Rouse Hill Medical Centre** and several **General Practitioners**.