

TRIBECA



CRESTMED. QLD.

Lot 30 - Bruce Baker Crescent, Crestmead , QLD 4132



Artist's impression



**GREEN
ESTATE**

HOUSE & LAND
\$464,980 FIXED PRICE

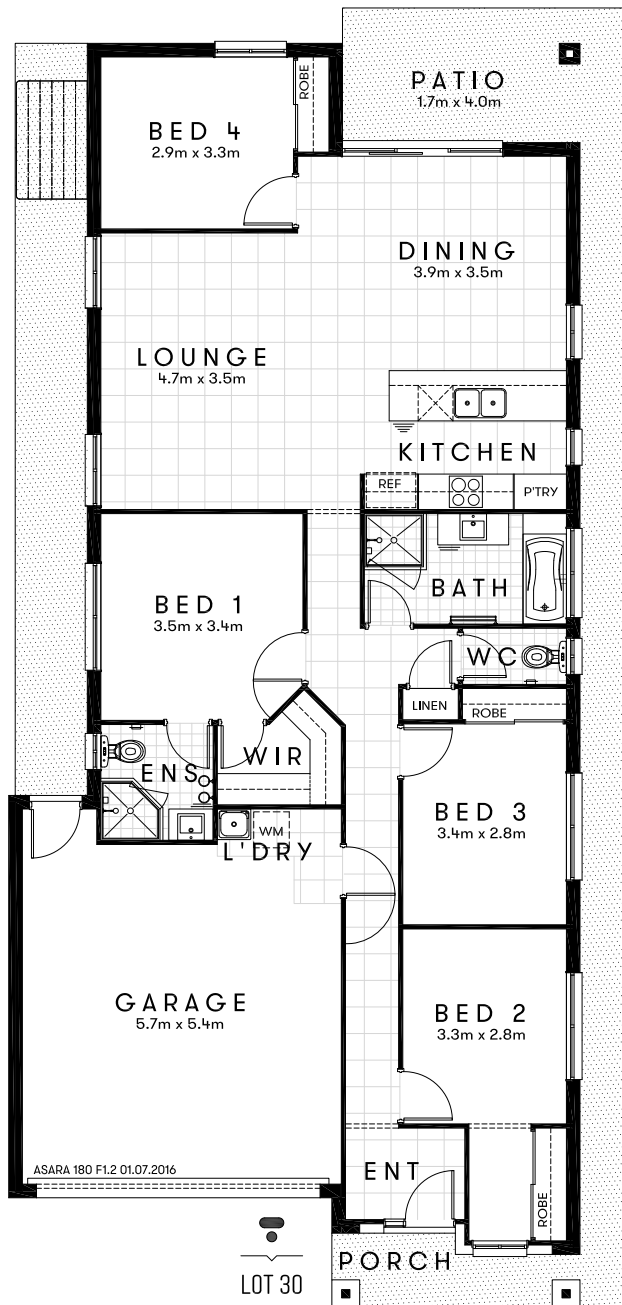


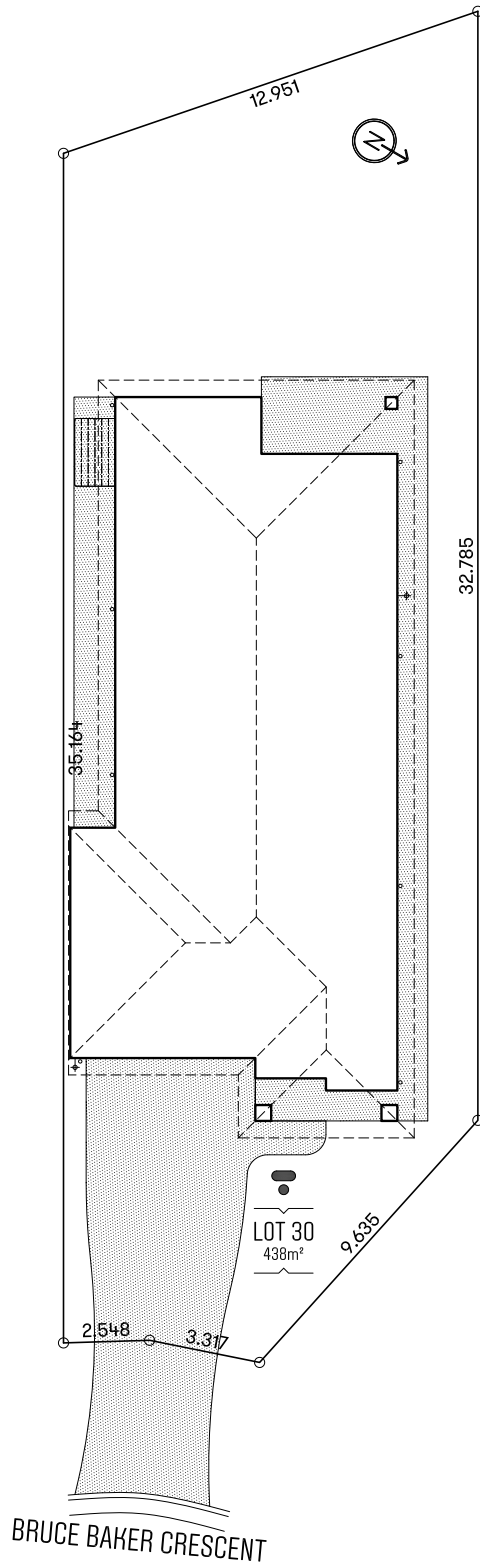
Approx. House Area 180m²
Land Area 438m²

House Price \$229,980
Land Price \$235,000

TRIBECA

Design Asara 180 F1.2 Approx. House Area 180m²
Land Area 438m² House Price \$229,980 Land Price \$235,000





HOME OVERVIEW

Design Asara 180 F1.2

Approx. House Area 180m²

Land Area 438m²

House Price \$229,980

Land Price \$235,000

QUALITY INCLUSIONS

- Fixed site costs, no surprises
- 2590mm raised ceiling height
- 20mm manufactured stone bench top to kitchen, bathroom and ensuite
- Quality stainless steel appliances
- Reverse cycle split system air conditioner to living area
- Carpeted and tiled throughout
- Superior fittings and fixtures
- Under-mount sink to kitchen
- Floating vanities to bathroom and ensuite
- Niches to bathroom and ensuite showers
- Flyscreens to windows, security screens to external doors
- Blinds throughout
- Covered alfresco
- Turfed and landscaped
- Exposed aggregate concrete driveway and paths
- Fully fenced
- Clothesline & letterbox
- 3 coat paint system
- 6 star energy efficiency
- Professionally selected external and internal colours and materials

NEW STANDARD INCLUSIONS

Tribeca is committed to continuous improvement in our designs and product.

We have improved our already fantastic standard inclusions to now feature multiple improvements, making your Tribeca home or investment unmatched in quality at no extra cost.



Our new improved standard specifications include:

- Additional planting to the landscaping
- Additional LED lights across the home and the outdoor alfresco areas
- Additional double powerpoints to each room
- Larger tiles (450mmx450mm) in bathroom and ensuites for a premium look
- New Handheld shower rail
- Niches to bathroom and ensuite showers
- Brick finish over windows



OUR DIFFERENCE IS SEEN IN
THE MOST OBVIOUS PLACES,
BUT ALSO THE SMALLER ONES.

