

TRIBECA

# GREGORY HILLS. NSW.

**Lot 3007** - Barrett Street, Gregory Hills , NSW 2557



HOUSE & LAND  
**\$735,980** FIXED PRICE

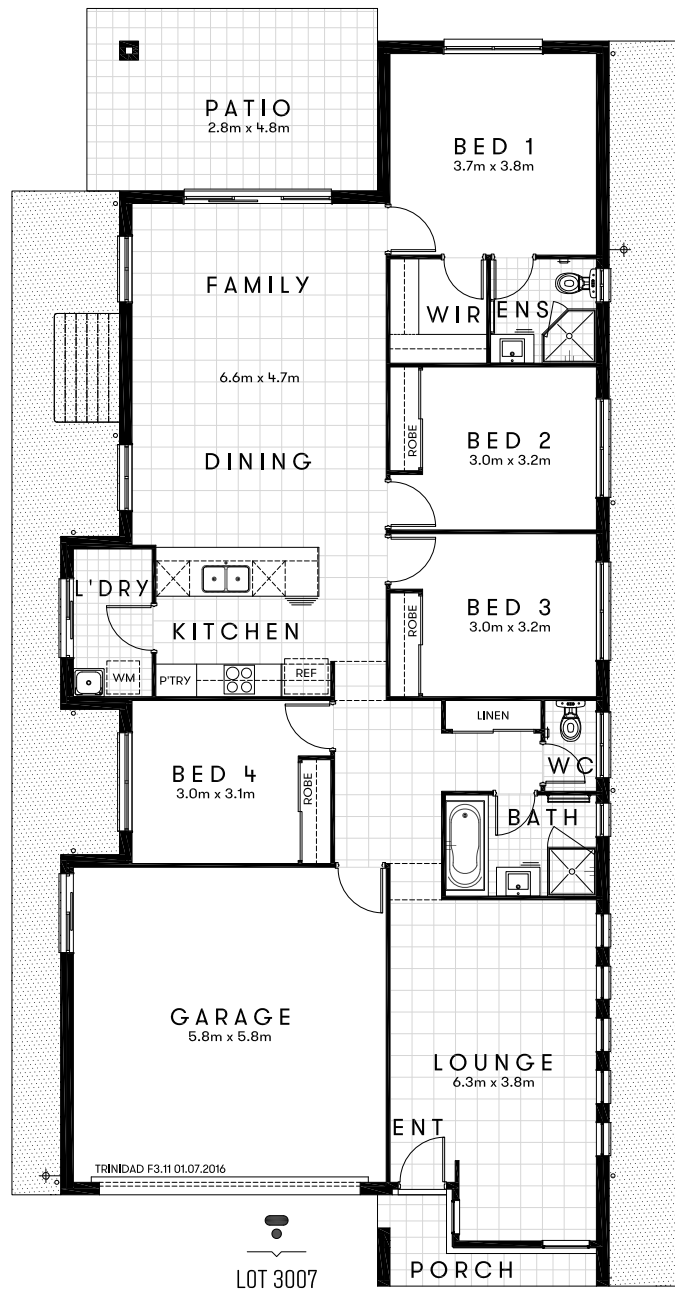


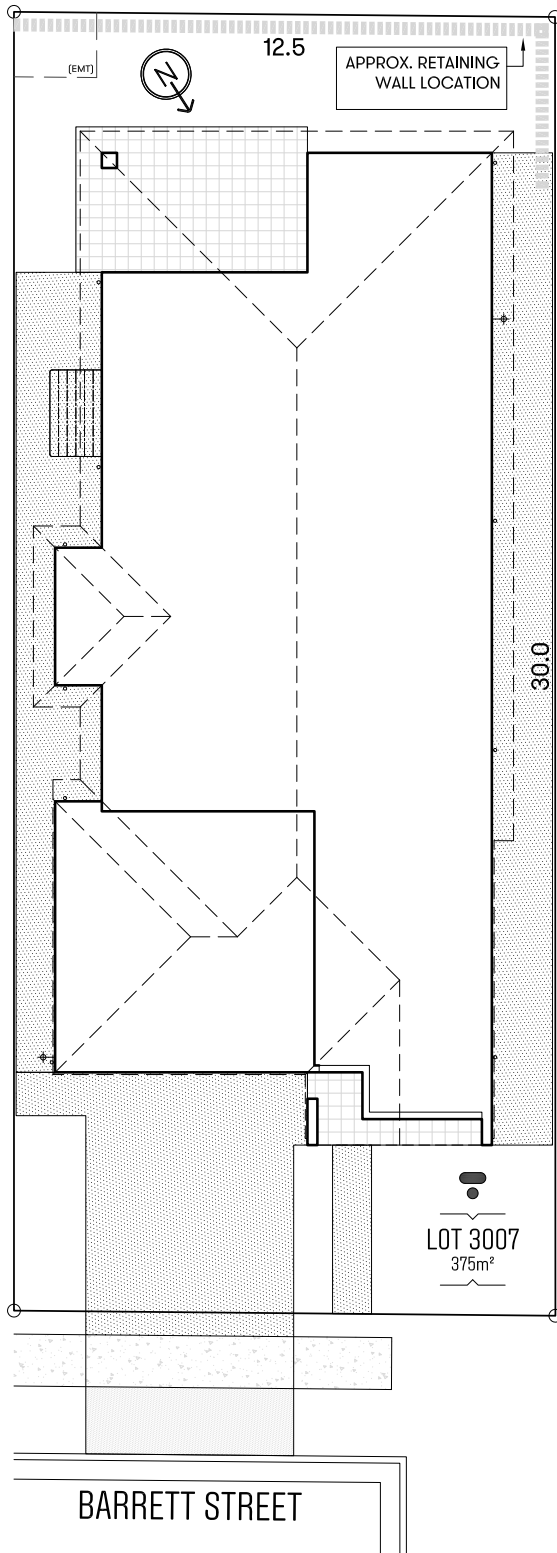
Approx. House Area 209m<sup>2</sup>  
Land Area 375m<sup>2</sup>

House Price \$320,980  
Land Price \$415,000

# TRIBECA

Design Trinidad F3.11 Approx. House Area 209m<sup>2</sup>  
Land Area 375m<sup>2</sup> House Price \$320,980 Land Price \$415,000





## HOME OVERVIEW

**Design** Trinidad F3.11  
**Approx. House Area** 209m<sup>2</sup>  
**Land Area** 375m<sup>2</sup>  
**House Price** \$320,980  
**Land Price** \$415,000

## QUALITY INCLUSIONS

- Fixed site costs, no surprises
- Carpeted and tiled throughout
- 2590mm nominal ceiling height
- Manufactured stone bench top to kitchen, bathroom & ensuite
- Quality stainless steel appliances
- Superior fittings and fixtures
- Fly screens & security screens to external doors
- Blinds throughout
- Covered alfresco
- Turfed & Landscaped
- Driveway & pathways
- Fully fenced
- Clothesline & letterbox
- Preselected colours; Interior designers have created stylish interiors



## A PLACE OF BRILLIANT OPPORTUNITY

NESTLED WITHIN THE BOOMING SUBURB OF  
GREGORY HILLS, JUST 50KM SOUTH OF THE SYDNEY  
CBD, DREAMSCAPE OFFERS A NEW NEIGHBOURHOOD  
OF ARCHITECTURALLY DESIGNED HOMES, GREEN  
OPEN SPACES AND FRIENDLY COMMUNITY LIVING.

Dreamscape is perfectly placed with shopping, schools, parks and everything you need at your door, balancing quiet village life with easy access to the city. Designed and delivered by Tribeca, Dreamscape is part of a larger staged release in the area. This thriving precinct has already seen hundreds of purchasers take advantage of a unique and dynamic location, ensuring that Dreamscape will be a vibrant new addition to a flourishing community for generations to come.

