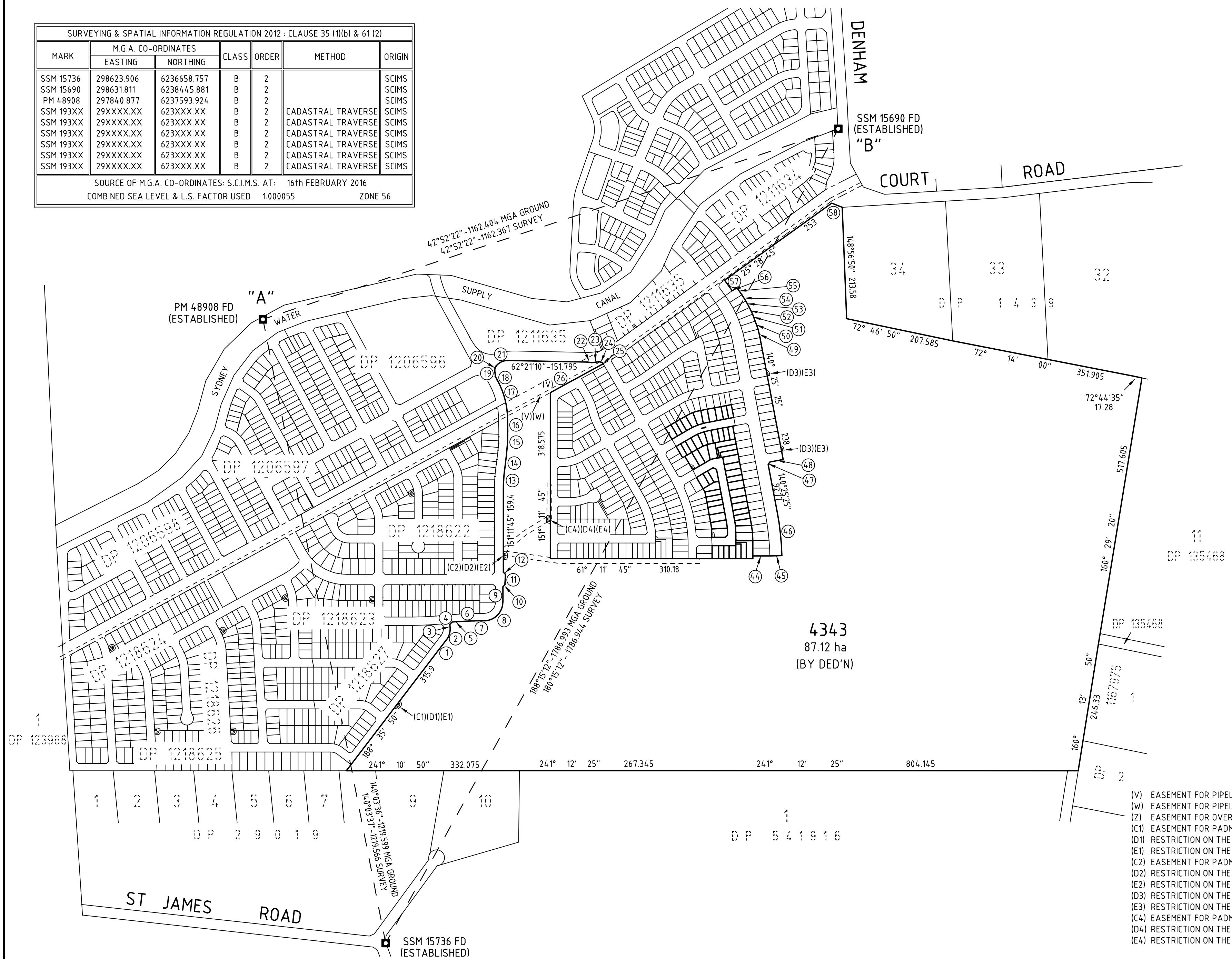


SURVEYING & SPATIAL INFORMATION REGULATION 2012 : CLAUSE 35 (1)(b) & 61 (2)						
MARK	M.G.A. CO-ORDINATES		CLASS	ORDER	METHOD	ORIGIN
	EASTING	NORTHING				
SSM 15736	298623.906	6236658.757	B	2		SCIMS
SSM 15690	298631.811	6238445.881	B	2		SCIMS
PM 48908	297840.877	6237593.924	B	2		SCIMS
SSM 193XX	29XXXX.XX	623XXX.XX	B	2	CADASTRAL TRAVERSE	SCIMS
SSM 193XX	29XXXX.XX	623XXX.XX	B	2	CADASTRAL TRAVERSE	SCIMS
SSM 193XX	29XXXX.XX	623XXX.XX	B	2	CADASTRAL TRAVERSE	SCIMS
SSM 193XX	29XXXX.XX	623XXX.XX	B	2	CADASTRAL TRAVERSE	SCIMS
SSM 193XX	29XXXX.XX	623XXX.XX	B	2	CADASTRAL TRAVERSE	SCIMS
SSM 193XX	29XXXX.XX	623XXX.XX	B	2	CADASTRAL TRAVERSE	SCIMS
SSM 193XX	29XXXX.XX	623XXX.XX	B	2	CADASTRAL TRAVERSE	SCIMS
SOURCE OF M.G.A. CO-ORDINATES: S.C.I.M.S. AT: 16th FEBRUARY 2016						
COMBINED SEA LEVEL & L.S. FACTOR USED 1.000055 ZONE 56						

CURVED & SHORT BOUNDARIES				
No.	CHORD	ARC	RADIUS	
1	8°35'50"	42.4	-	-
2	347°31'40"	25.595	26.18	35.6
3	326°27'30"	5.175	-	-
4	13°49'40"	6.095	-	-
5	56°27'30"	13.745	-	-
6	58°41'25"	30.665	30.675	393.9
7	61°10'50"	17.065	-	-
8	16°11'45"	51.055	56.705	36.1
9	331°11'45"	29	-	-
10	16°11'45"	5.655	-	-
11	334°03'30"	20.025	-	-
12	286°11'45"	5.655	-	-
13	334°42'25"	35.88	35.905	292.9
14	338°13'10"	31.985	-	-
15	334°13'35"	42.765	42.8	307.1
16	330°06'45"	29.98	-	-
17	315°31'55"	70.835	71.45	157.1
18	302°30'10"	8.38	-	-
19	324°58'20"	11.615	-	-
20	348°26'45"	8.97	9.17	12.7
21	35°48'55"	25.2	26.195	28.2
22	68°10'25"	8.28	-	-
23	53°56'15"	15.685	15.7	109.6
24	84°52'05"	6.465	-	-
25	120°56'45"	1.86	-	-
26	212°32'45"	115.34	-	-
44	61°11'45"	32.715	-	-
45	59°51'10"	23	-	-
46	145°08'20"	84.08	84.175	511.5
47	5°25'25"	5.655	-	-
48	50°25'25"	26	-	-
49	318°40'35"	16.435	-	-
50	311°18'20"	16.555	-	-
51	311°06'35"	14.215	-	-
52	305°42'25"	14.21	-	-
53	302°18'55"	14.18	-	-
54	298°45'35"	14.15	-	-
55	295°28'45"	17.165	-	-
56	205°28'45"	10.52	-	-
57	295°28'45"	25	-	-
58	263°02'45"	21.77	-	-



- (V) EASEMENT FOR PIPELINE 24.385 WIDE (LIMITED IN STRATUM) (DP 499001 VIDE P720206)
- (W) EASEMENT FOR PIPELINE 6 WIDE (DP 499057 VIDE 2375527)
- (Z) EASEMENT FOR OVERHEAD POWER LINES 9 WIDE (DP 1229975)
- (C1) EASEMENT FOR PADMOUNT SUBSTATION 2.75 WIDE (DP 1218627)
- (D1) RESTRICTION ON THE USE OF LAND (DP 1218627)
- (E1) RESTRICTION ON THE USE OF LAND (DP 1218627)
- (C2) EASEMENT FOR PADMOUNT SUBSTATION 2.75 WIDE (DP 1229975)
- (D2) RESTRICTION ON THE USE OF LAND (DP 1229975)
- (E2) RESTRICTION ON THE USE OF LAND (DP 1229975)
- (D3) RESTRICTION ON THE USE OF LAND (DP 1229977)
- (E3) RESTRICTION ON THE USE OF LAND (DP 1229977)
- (C4) EASEMENT FOR PADMOUNT SUBSTATION 2.75 WIDE (DP 1229978)
- (D4) RESTRICTION ON THE USE OF LAND (DP 1229978)
- (E4) RESTRICTION ON THE USE OF LAND (DP 1229978)

Surveyor: Ziemowit Tomasz Wierchowski  
 Date of Survey: 28th APRIL 2017  
 Surveyor's Ref: 600319 DP-66

PLAN OF SUBDIVISION  
 OF LOT 4284 IN DP 1229979

L.G.A.: CAMPBELLTOWN  
 Locality: DENHAM COURT  
 Subdivision No:  
 Lengths are in metres. Reduction Ratio 1:5000

Registered  
 DRAFT  
 2017.08.08

STAGE 16F DP-66  
 PPN DP 1229980



**REFERENCE MARKS**

No.	REFERENCE	TYPE
CT	122°32'45" 3.55 & 11.55	D H & W'S FD (DP1218626)
CU	122°32'45" 3.55 & 11.55	D H & W'S FD (DP1218626)
EL	212°32'45" 3.55 & 11.55	D H & W'S FD (DP1218627)
EM	212°32'45" 3.55 & 11.55	D H & W'S FD (DP1218627)
ER	24°11'45" 3.55 & 11.55	D H & W'S FD (DP1218627)
ES	122°32'45" 3.55 & 11.55	D H & W'S FD (DP1218627)
FE	212°32'45" 3.55 & 11.55	DRILL HOLE & WINGS
FF	212°32'45" 3.55 & 11.55	DRILL HOLE & WINGS
FG	24°11'45" 3.55 & 11.55	DRILL HOLE & WINGS
FH	24°11'45" 3.55 & 11.55	DRILL HOLE & WINGS

**CURVED & SHORT BOUNDARIES**

No.	CHORD	ARC	RADIUS
59	32°44'40"	6.775	108
60	37°33'	11.34	108
61	43°34'	11.335	108
62	48°30'	7.255	108
63	227°47'30"	8.45	92
64	220°52'50"	13.73	92
65	213°46'25"	9.075	92
66	32°32'35"	1.085	19.5
67	42°54'50"	5.95	19.5

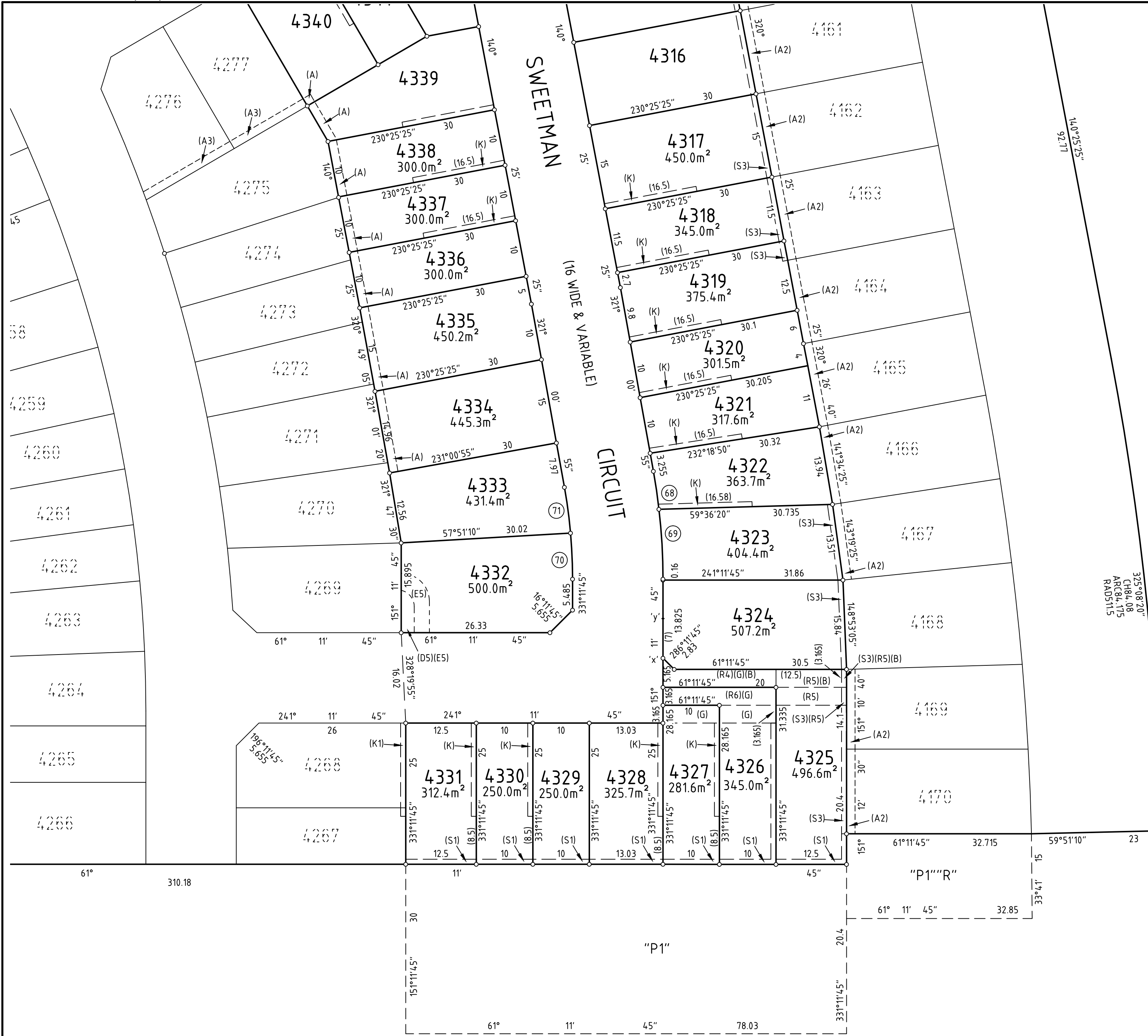
Surveyor: **Ziemowit Tomasz Wierchowski**  
 Date of Survey: **28th APRIL 2017**  
 Surveyor's Ref: **600319 DP-66**

**PLAN OF SUBDIVISION  
 OF LOT 4284 IN DP 1229979**

L.G.A.: **CAMPBELLTOWN**  
 Locality: **DENHAM COURT**  
 Subdivision No:  
 Lengths are in metres. Reduction Ratio 1:500

**Registered  
 DRAFT  
 2017.08.08**

**STAGE 16F DP-66  
 PPN DP 1229980**

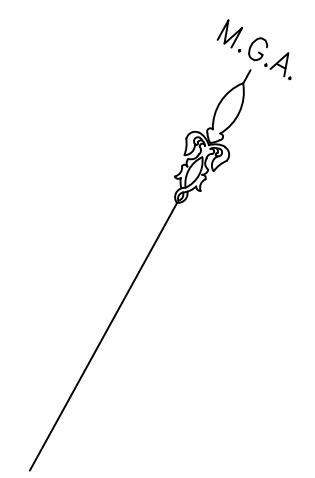


**CURVED & SHORT BOUNDARIES**

No.	CHORD	ARC	RADIUS
68	14.2°49'	6.79	6.79
69	14.7°54'25"	12.39	12.4
70	328°39'05"	8.17	8.17
71	323°33'40"	8.17	8.175

**REFERENCE MARKS**

No.	REFERENCE	TYPE
CT	122°32'45" 3.55 & 11.55	D H & W'S FD (DP1218626)
CU	122°32'45" 3.55 & 11.55	D H & W'S FD (DP1218626)
EL	212°32'45" 3.55 & 11.55	D H & W'S FD (DP1218627)
EM	212°32'45" 3.55 & 11.55	D H & W'S FD (DP1218627)
ER	241°11'45" 3.55 & 11.55	D H & W'S FD (DP1218627)
ES	122°32'45" 3.55 & 11.55	D H & W'S FD (DP1218627)
FE	212°32'45" 3.55 & 11.55	DRILL HOLE & WINGS
FF	212°32'45" 3.55 & 11.55	DRILL HOLE & WINGS
FG	241°11'45" 3.55 & 11.55	DRILL HOLE & WINGS
FH	241°11'45" 3.55 & 11.55	DRILL HOLE & WINGS



- (A) EASEMENT TO DRAIN WATER 1.5 WIDE
  - (A2) EASEMENT TO DRAIN WATER 1.5 WIDE (DP 1229977)
  - (A3) EASEMENT TO DRAIN WATER 1.5 WIDE (DP 1229979)
  - (B) EASEMENT TO DRAIN WATER 1.5 & 3.165 WIDE & VARIABLE
  - (D5) RESTRICTION ON THE USE OF LAND (DP 1229979)
  - (E5) RESTRICTION ON THE USE OF LAND (DP 1229979)
  - (G) EASEMENT FOR SERVICES 9.5 WIDE
  - (K) EASEMENT FOR MAINTENANCE AND ACCESS 0.9 WIDE
  - (K1) EASEMENT FOR MAINTENANCE AND ACCESS 0.9 WIDE (DP 1229979)
  - (R1) RIGHT OF CARRIAGEWAY 3.165 WIDE & VARIABLE
  - (R2) RIGHT OF CARRIAGEWAY 6.33 WIDE
  - (R3) RIGHT OF CARRIAGEWAY 3.165 WIDE
  - (S1) EASEMENT FOR SUPPORT AND ACCESS 0.9 WIDE
  - (S3) EASEMENT FOR SUPPORT AND ACCESS 0.9 WIDE (DP 1229977)
- "P1" AREA BENEFITED BY (S1)  
 "R" AREA BENEFITED BY (B)

Surveyor: <b>Ziemowit Tomasz Wierzchowski</b> Date of Survey: <b>28th APRIL 2017</b> Surveyor's Ref: <b>600319 DP-66</b>	<b>PLAN OF SUBDIVISION                  OF LOT 4284 IN DP 1229979</b>	L.G.A.: <b>CAMPBELLTOWN</b> Locality: <b>DENHAM COURT</b> Subdivision No: Lengths are in metres. Reduction Ratio 1:500	-Registered- <b>DRAFT</b> <b>2017.08.08</b>	<b>STAGE 16F DP-66</b> <b>PPN DP 1229980</b>
--	---	---	---	---