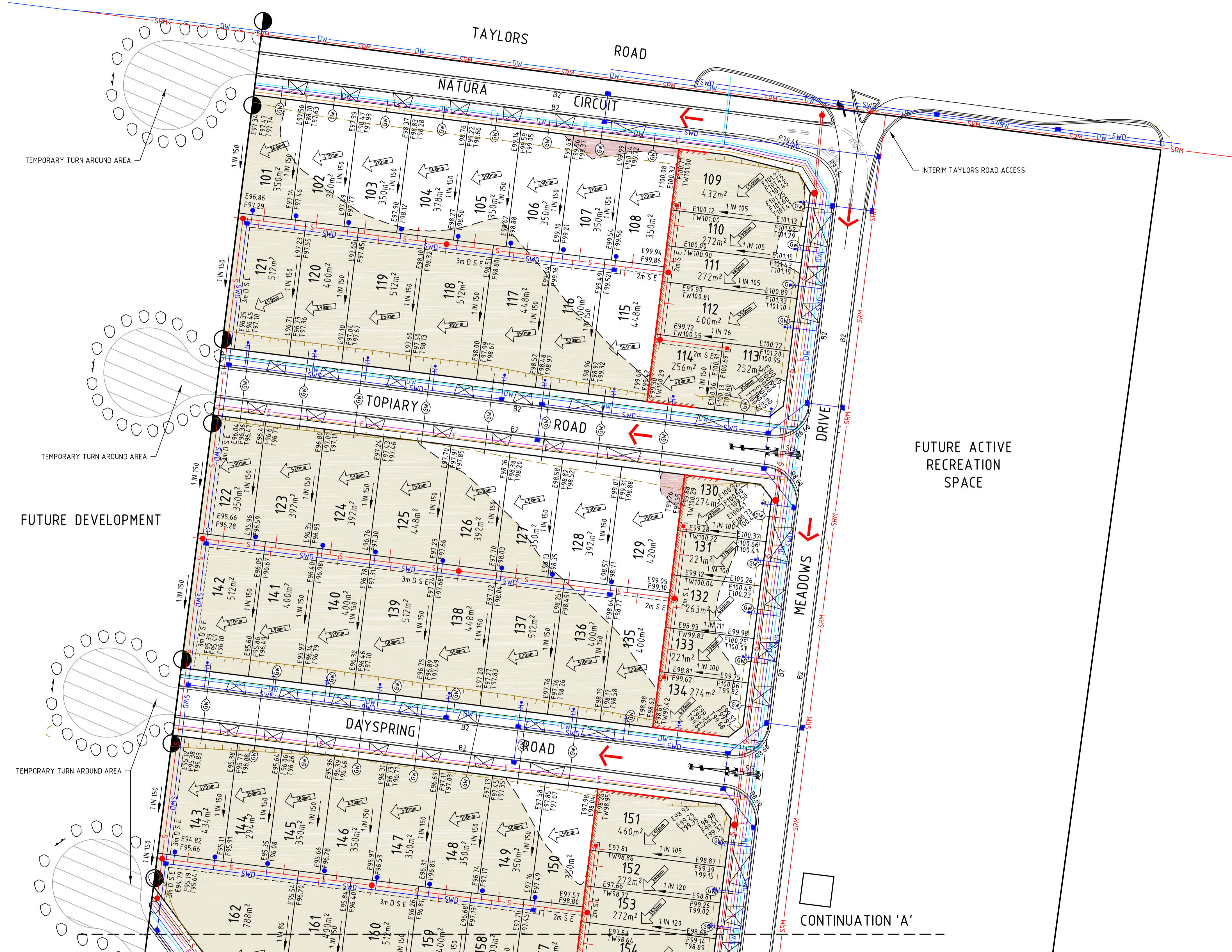
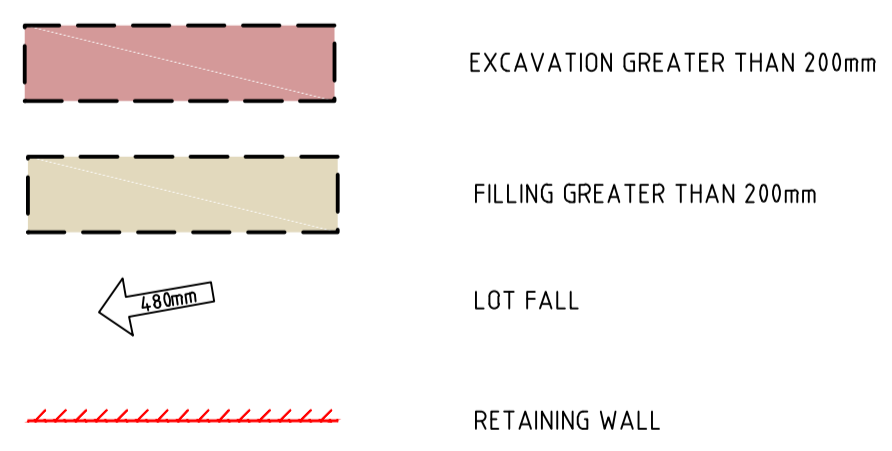


FUTURE DEVELOPMENT



SURFACE LEVEL LEGEND

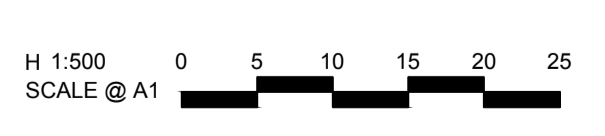
F112.70 FINISHED SURFACE LEVEL
 E112.13 EXISTING SURFACE LEVEL
 T112.82 TOP/TOE OF BATTER LEVEL
 TW112.82 TOP OF RETAINING WALL



NOTE:
 EARTHWORK DETAIL SHOWN IS BASED ON PRELIMINARY DESIGN ONLY. LEVELS AND RETAINING WALLS ARE SUBJECT TO CHANGE BASED ON THE FINAL DESIGN AND COUNCIL APPROVAL PROCESS.

file name: 304817CG200 FILL PLAN.dwg, layout name: CG200, plotted by: Miriam Ong, file location: G:\304817\CG200\304817CG200.dwg, plot date: 05/06/2018 5:13 PM, Sheet 1 of 2 Sheets

Rev	Amendments	Approved	Date
E	FOR INFORMATION ONLY	M.R	05-06-18
D	FOR INFORMATION ONLY	M.R	12-04-18
C	FOR INFORMATION ONLY	M.R	04-04-18
B	FOR INFORMATION ONLY	M.R	28-02-18
A	FOR INFORMATION ONLY	M.R	27-02-18



© Spiire Australia Pty Ltd All Rights Reserved
 This document is produced by Spiire Australia Pty Ltd solely for the benefit of and use by the client in accordance with the terms of the retainer. Spiire Australia Pty Ltd does not and shall not assume any responsibility or liability whatsoever to any third party arising out of any use or reliance by third party on the content of this document.



469 La Trobe Street PO Box 16084 Melbourne
 Victoria 3007 Australia T 61 3 9993 7888
 spiire.com.au ABN 55 050 029 635



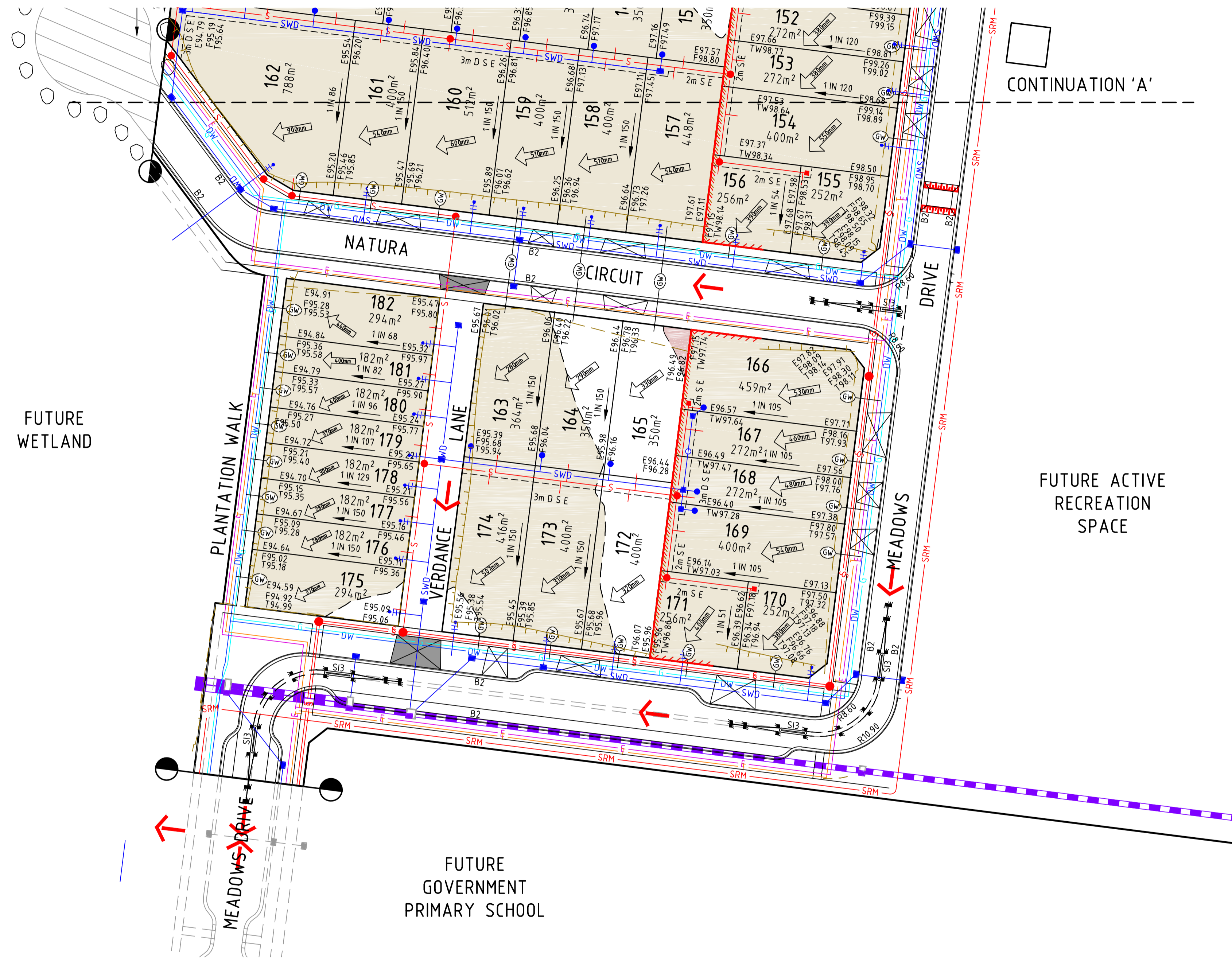
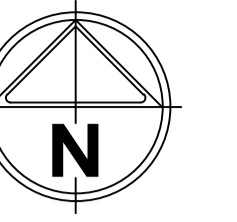
Designed
 W.ONG
 Authorised
 M.READMAN



Checked
 M.READMAN
 Date
 12-04-18

BOWERY
STAGE 1
ENGINEERING SALES PLAN
SHEET 1 OF 2
 MELTON CITY COUNCIL
 WELSH DEVELOPMENTS

PRELIMINARY Drg No **304817CG200** Rev **E**



SURFACE LEVEL LEGEND

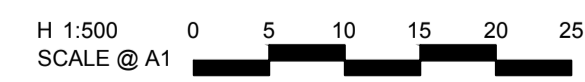
- F112.70 FINISHED SURFACE LEVEL
- E112.13 EXISTING SURFACE LEVEL
- T112.82 TOP/TOE OF BATTER LEVEL
- TW112.82 TOP OF RETAINING WALL

- EXCAVATION GREATER THAN 200mm
- FILLING GREATER THAN 200mm
- LOT FALL
- RETAINING WALL

NOTE:
EARTHWORK DETAIL SHOWN IS BASED ON PRELIMINARY DESIGN ONLY. LEVELS AND RETAINING WALLS ARE SUBJECT TO CHANGE BASED ON THE FINAL DESIGN AND COUNCIL APPROVAL PROCESS.

file name: 304817CG201_FILL_PLAN.dwg; layout name: CG201; file location: G:\304817CG201\Drawings\CG201; plot date: 05/06/2018 13:13 PM; Sheet 2 of 2; Sheets

Rev	Amendments	Approved	Date
E	FOR INFORMATION ONLY	M.R	05-06-18
D	FOR INFORMATION ONLY	M.R	12-04-18
C	FOR INFORMATION ONLY	M.R	04-04-18
B	FOR INFORMATION ONLY	M.R	28-02-18
A	FOR INFORMATION ONLY	M.R	27-02-18



© Spiire Australia Pty Ltd All Rights Reserved
This document is produced by Spiire Australia Pty Ltd solely for the benefit of and use by the client in accordance with the terms of the retainer. Spiire Australia Pty Ltd does not and shall not assume any responsibility or liability whatsoever to any third party arising out of any use or reliance by third party on the content of this document.



469 La Trobe Street PO Box 16084 Melbourne
Victoria 8007 Australia T 61 3 9993 7888
spiire.com.au ABN 55 050 029 635



Designed
W.ONG
Authorised
M.READMAN



Checked
M.READMAN
Date
12-04-18

**BOWERY
STAGE 1
ENGINEERING SALES PLAN
SHEET 2 OF 2**
MELTON CITY COUNCIL
WELSH DEVELOPMENTS

PRELIMINARY Drg No **304817CG201** Rev **E**