

REVISIONS	by	on
increase lot sizes 41 to 44 and 49	mk	28/11/14

PROJECT **PROPOSED SUBDIVISION**

CLIENT: North Kellyville Projects Pty. Ltd.

*** PRO-POSITION ***

TRADING NAME FOR MICHAEL KIRKWOOD AND ASSOCIATES PTY LTD
 SURVEYORS AND DEVELOPMENT CONSULTANTS
 PO BOX 78 BEROWRA NSW 2081
 0294564609
 MOBILE 0414575570

mike@pro-position.com.au

RATIO Hor. :1/500 ON A1
 AND AS SHOWN SHEET SIZE

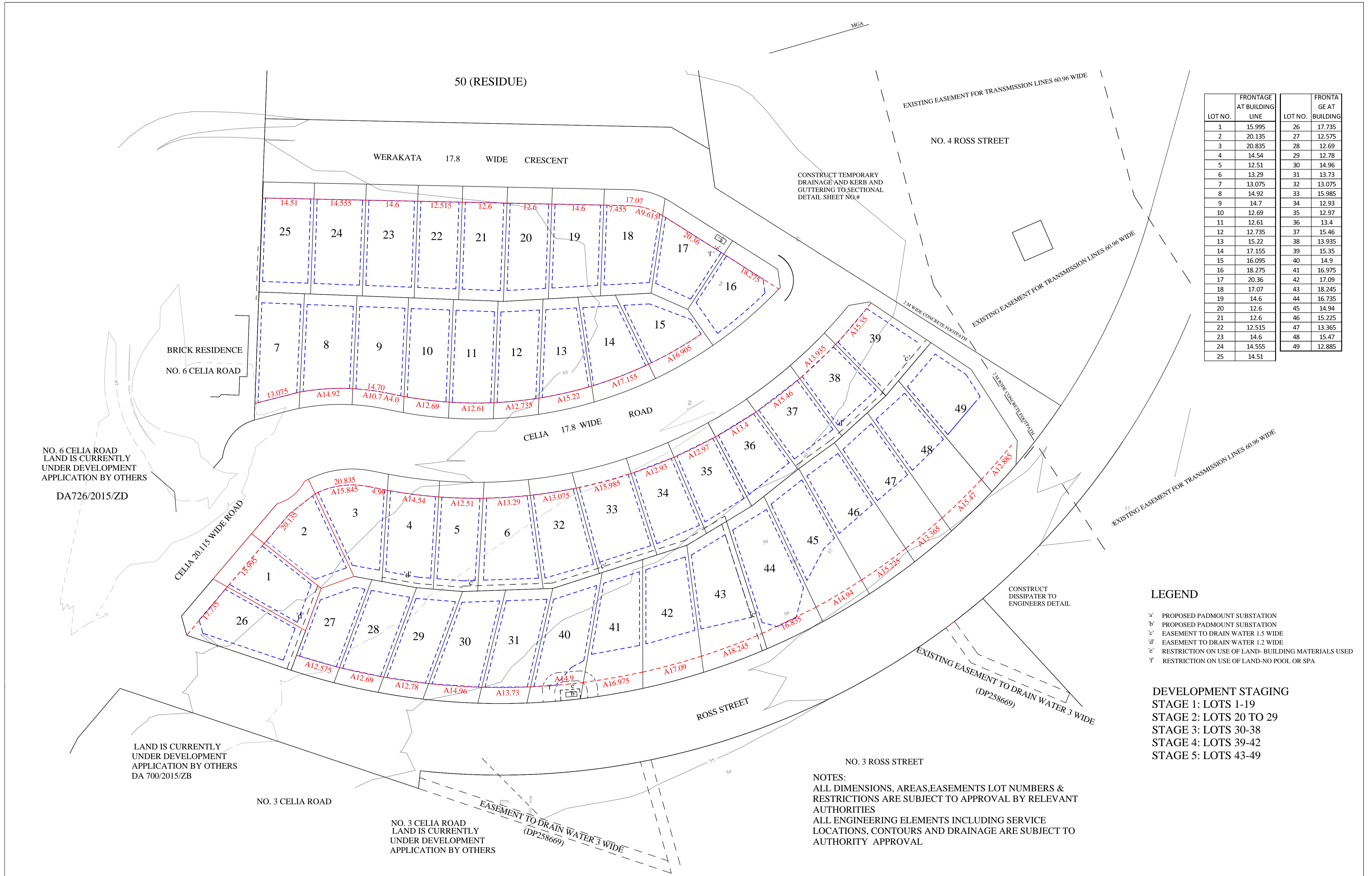
DATUM A.H.D.

Surveyed by: MK WQ
 Drawn by: MK
 Designed by:
 Checked by:

PROJECT
**PROPOSED RESIDENTIAL SUBDIVISION OF
 NO'S. 5 & 8 CELIA ROAD KELLYVILLE BEING PART LOT 11 DP219218 & LOT 1 DP593470**

PLAN ILLUSTRATING PROPOSED LOTS WITH BUILDING SETBACK LINES

SHEET NO.	NO. OF SHEETS
1	1
JOB REF: 14301 Celia DA rev 1	DRAWING
COUNCIL REFERENCE	



LOT NO.	FRONTAGE AT BUILDING LINE	LOT NO.	FRONTAGE AT BUILDING LINE
1	15.995	26	17.735
2	20.135	27	12.575
3	20.835	28	12.69
4	14.54	29	12.78
5	12.51	30	14.96
6	13.29	31	13.73
7	13.075	32	13.075
8	14.92	33	15.985
9	14.7	34	12.93
10	12.69	35	12.97
11	12.61	36	13.4
12	12.735	37	15.46
13	15.22	38	13.935
14	17.155	39	15.35
15	16.095	40	14.9
16	18.275	41	16.975
17	20.36	42	17.09
18	17.07	43	18.245
19	14.6	44	16.735
20	12.6	45	14.94
21	12.6	46	15.225
22	12.515	47	13.365
23	14.6	48	15.47
24	14.555	49	12.885
25	14.51		

LEGEND

- 'a' PROPOSED PADMOUNT SUBSTATION
- 'b' PROPOSED PADMOUNT SUBSTATION
- 'c' EASEMENT TO DRAIN WATER 1.5 WIDE
- 'd' EASEMENT TO DRAIN WATER 1.2 WIDE
- 'e' RESTRICTION ON USE OF LAND- BUILDING MATERIALS USED
- 'f' RESTRICTION ON USE OF LAND-NO POOL OR SPA

DEVELOPMENT STAGING

- STAGE 1: LOTS 1-19
- STAGE 2: LOTS 20 TO 29
- STAGE 3: LOTS 30-38
- STAGE 4: LOTS 39-42
- STAGE 5: LOTS 43-49

NOTES:
 ALL DIMENSIONS, AREAS, EASEMENTS LOT NUMBERS & RESTRICTIONS ARE SUBJECT TO APPROVAL BY RELEVANT AUTHORITIES
 ALL ENGINEERING ELEMENTS INCLUDING SERVICE LOCATIONS, CONTOURS AND DRAINAGE ARE SUBJECT TO AUTHORITY APPROVAL

REVISIONS	by	on	PROJECT	* PRO-POSITION *	RATIO Hor. :1/500 ON A1 Hor. :1/1000 ON A3 AND AS SHOWN SHEET SIZE	DATUM A.H.D.	PROJECT	SHEET NO.	NO. OF SHEETS
			PROPOSED SUBDIVISION	TRADING NAME FOR MICHAEL KIRKWOOD AND ASSOCIATES PTY LTD SURVEYORS AND DEVELOPMENT CONSULTANTS PO BOX 78 BEROWRA NSW 2081 0294564609 MOBILE 0414575570 mike@pro-position.com.au			PROPOSED RESIDENTIAL SUBDIVISION OF NO'S. 5 & 8 CELIA ROAD KELLYVILLE BEING PART LOT 11 DP219218 & LOT 1 DP593470	2	2
			CLIENT: North Kellyville Projects Pty. Ltd.		Surveyed by: MK WQ		PLAN OF PROPOSED SUBDIVISION- BUILDING LINE FRONTAGES	JOB REF:	DRAWING
					Drawn by: MK	18/11/2014		14301 Celia DA	
					Designed by:	18/11/2014		COUNCIL REFERENCE	
					Checked by:				