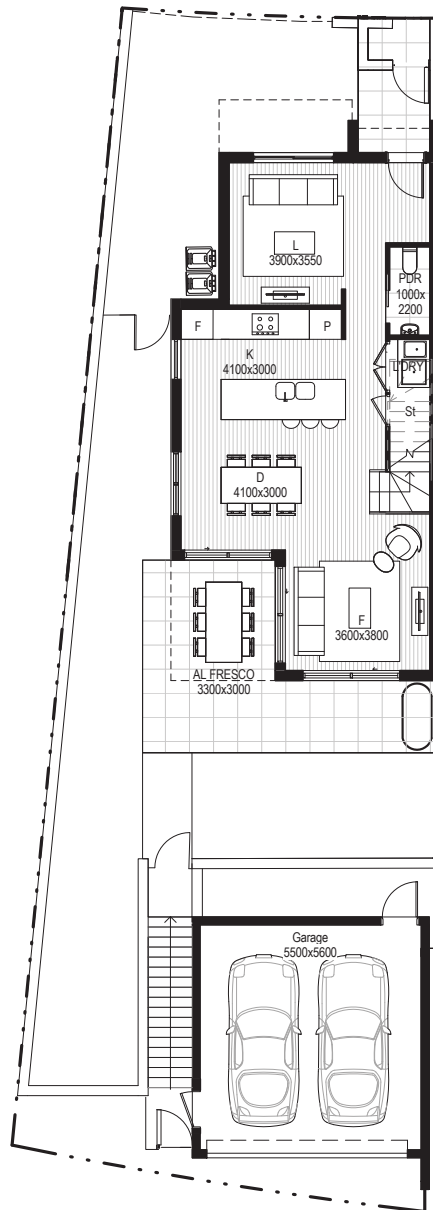


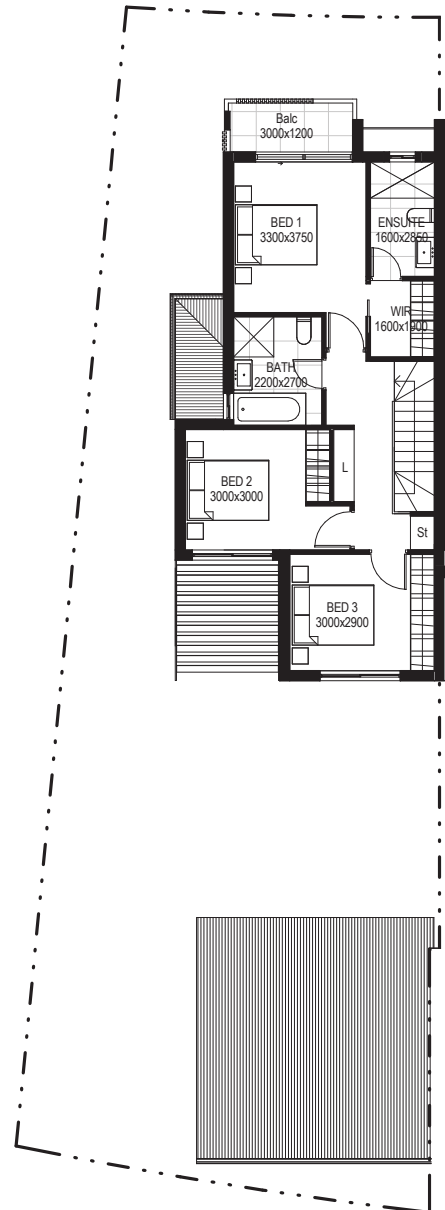
FARLEY

3 2.5 2

LOT 02



Ground floor



First floor



HOUSE AREA	74.28m ²
GROUND FLOOR	70.68m ²
FIRST FLOOR	34.80m ²
GARAGE	15.80m ²
ALFRESCO	195.56m ²
TOTAL	
LOT AREA	
TOTAL	265.80m ²

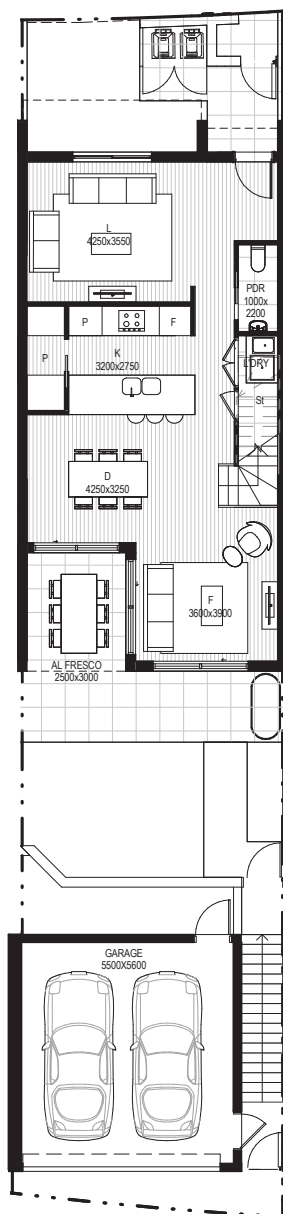
DISCLAIMER

This document is supplied solely for the purpose of providing an indicative floor plan of the nominated lot within the proposed development called "SANA". This document is based on information available at the time of creation (December 2016). Changes to the information contained in this document may occur in accordance with the terms of the contract for sale. The area of the nominated lot is set out in the table of areas. All dimensions and areas are approximate. Furniture, decorative items and plants are shown for indicative purposes only and are not included in the sale. The contract for sale should be reviewed in relation to dimensions, areas, sale inclusions and specifications. This document is not a legally binding obligation or warranty. No liability is accepted for any loss or damage arising as a result of any reliance on this document or its contents.

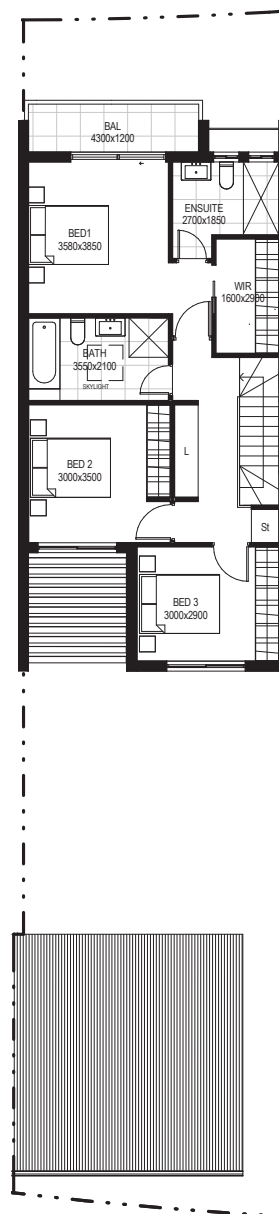
GLADE

3 2.5 2

LOT 03



Ground floor



First floor



HOUSE AREA
GROUND FLOOR
FIRST FLOOR
GARAGE
ALFRESCO
TOTAL

78.58m²
78.58m²
34.80m²
12.00m²
203.96m²

LOT AREA
TOTAL

200.50m²

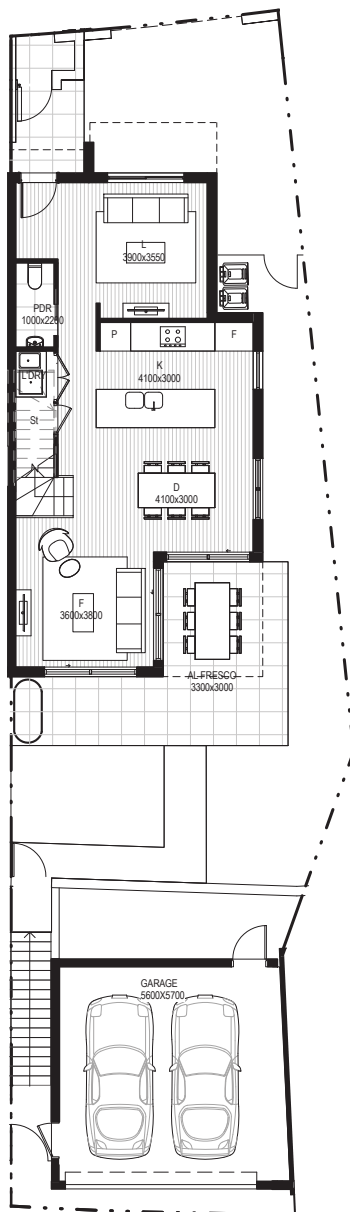
DISCLAIMER

This document is supplied solely for the purpose of providing an indicative floor plan of the nominated lot within the proposed development called "SANA". This document is based on information available at the time of creation (December 2016). Changes to the information contained in this document may occur in accordance with the terms of the contract for sale. The area of the nominated lot is set out in the table of areas. All dimensions and areas are approximate. Furniture, decorative items and plants are shown for indicative purposes only and are not included in the sale. The contract for sale should be reviewed in relation to dimensions, areas, sale inclusions and specifications. This document is not a legally binding obligation or warranty. No liability is accepted for any loss or damage arising as a result of any reliance on this document or its contents.

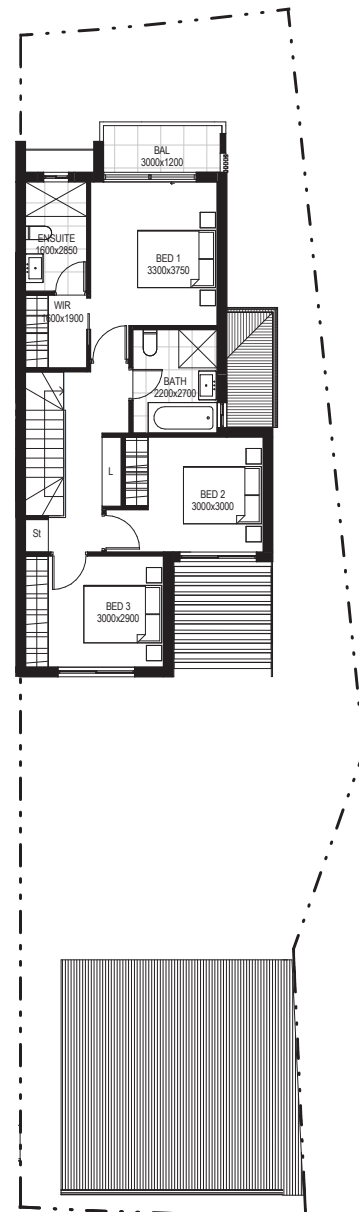
FARLEY

3 2.5 2

LOT 04



Ground floor



First floor



HOUSE AREA	74.28m ²
GROUND FLOOR	70.68m ²
FIRST FLOOR	37.20m ²
GARAGE	15.80m ²
ALFRESCO	197.96m ²
TOTAL	242.60m ²

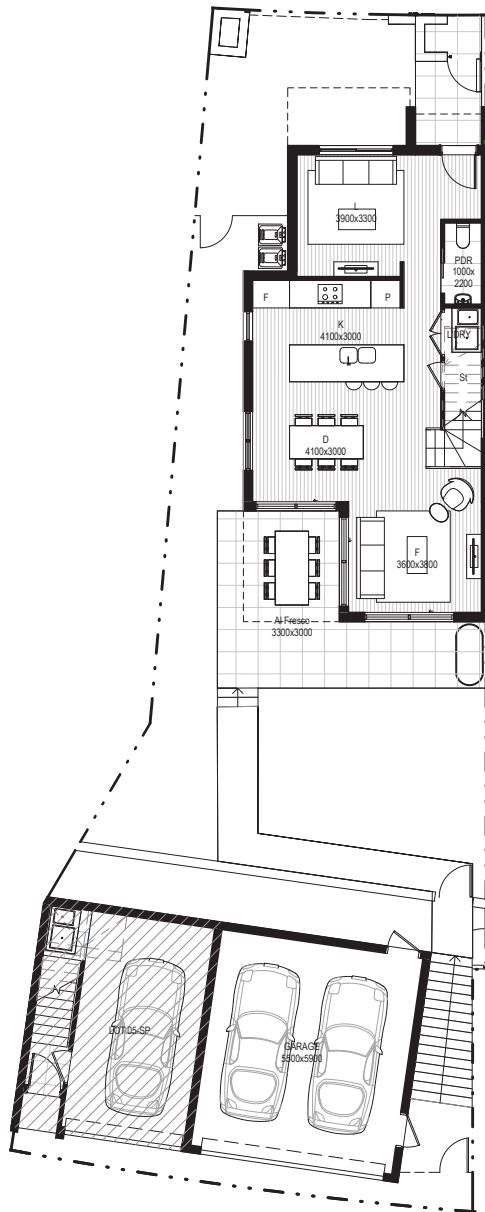
DISCLAIMER

This document is supplied solely for the purpose of providing an indicative floor plan of the nominated lot within the proposed development called "SANA". This document is based on information available at the time of creation (December 2016). Changes to the information contained in this document may occur in accordance with the terms of the contract for sale. The area of the nominated lot is set out in the table of areas. All dimensions and areas are approximate. Furniture, decorative items and plants are shown for indicative purposes only and are not included in the sale. The contract for sale should be reviewed in relation to dimensions, areas, sale inclusions and specifications. This document is not a legally binding obligation or warranty. No liability is accepted for any loss or damage arising as a result of any reliance on this document or its contents.

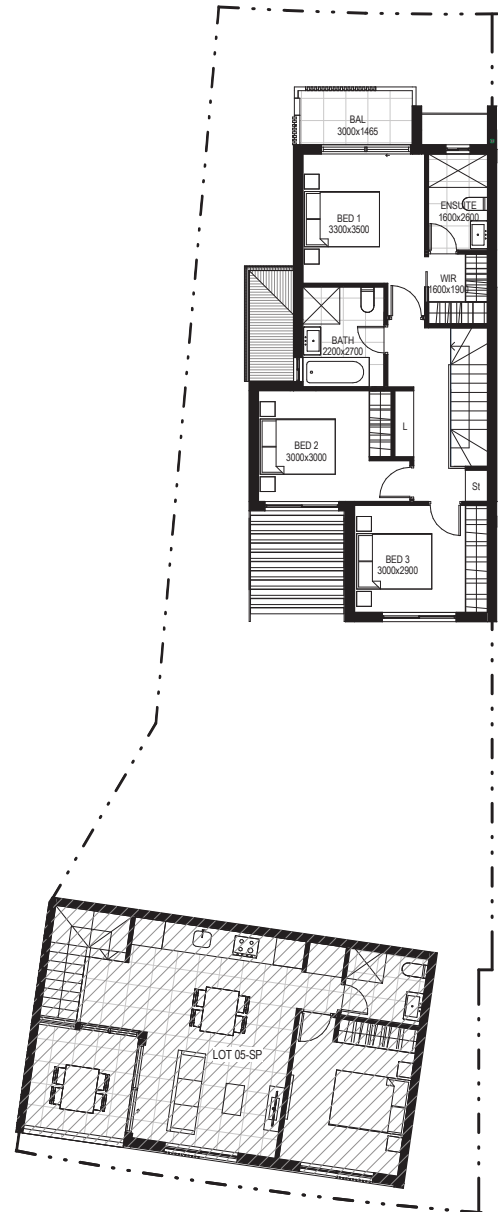
FARLEY

3 2.5 2

LOT 05



Ground floor



First floor



HOUSE AREA	72.60m ²
GROUND FLOOR	69.30m ²
FIRST FLOOR	36.60m ²
GARAGE	15.30m ²
ALFRESCO	193.80m ²
TOTAL	
LOT AREA	
TOTAL	229.70m ²

DISCLAIMER

This document is supplied solely for the purpose of providing an indicative floor plan of the nominated lot within the proposed development called "SANA". This document is based on information available at the time of creation (December 2016). Changes to the information contained in this document may occur in accordance with the terms of the contract for sale. The area of the nominated lot is set out in the table of areas. All dimensions and areas are approximate. Furniture, decorative items and plants are shown for indicative purposes only and are not included in the sale. The contract for sale should be reviewed in relation to dimensions, areas, sale inclusions and specifications. This document is not a legally binding obligation or warranty. No liability is accepted for any loss or damage arising as a result of any reliance on this document or its contents.

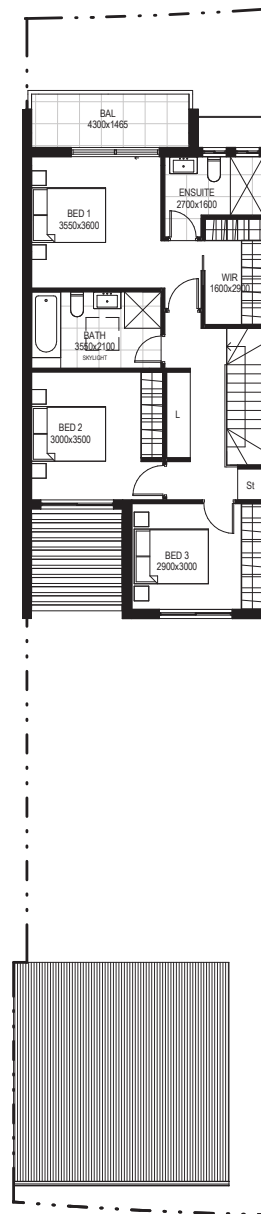
GLADE

3 2.5 2

LOT 06



Ground floor



First floor



HOUSE AREA
GROUND FLOOR
FIRST FLOOR
GARAGE
ALFRESCO
TOTAL

78.58m²
78.58m²
35.40m²
12.00m²
204.56m²

LOT AREA
TOTAL

218.40m²

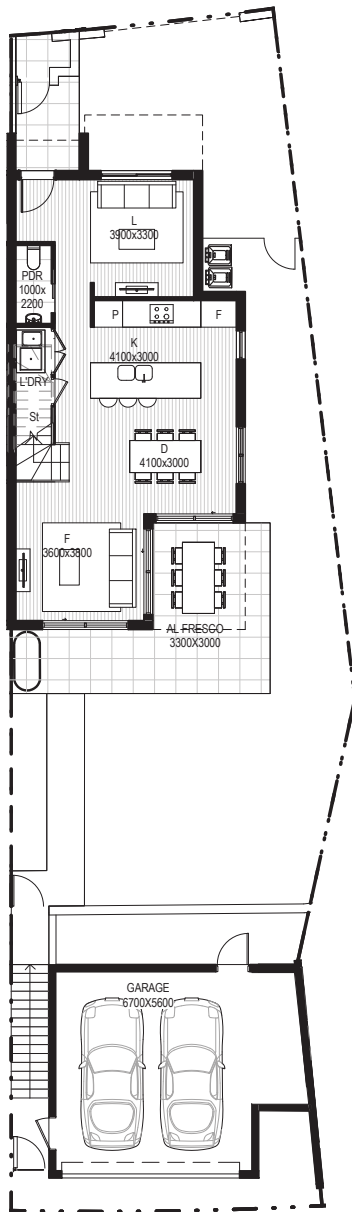
DISCLAIMER

This document is supplied solely for the purpose of providing an indicative floor plan of the nominated lot within the proposed development called "SANA". This document is based on information available at the time of creation (December 2016). Changes to the information contained in this document may occur in accordance with the terms of the contract for sale. The area of the nominated lot is set out in the table of areas. All dimensions and areas are approximate. Furniture, decorative items and plants are shown for indicative purposes only and are not included in the sale. The contract for sale should be reviewed in relation to dimensions, areas, sale inclusions and specifications. This document is not a legally binding obligation or warranty. No liability is accepted for any loss or damage arising as a result of any reliance on this document or its contents.

FARLEY

3 2.5 2

LOT 07



Ground floor



First floor



HOUSE AREA	72.60m ²
GROUND FLOOR	69.30m ²
FIRST FLOOR	40.80m ²
GARAGE	15.30m ²
ALFRESCO	198.00m ²
TOTAL	
LOT AREA	
TOTAL	286.20m ²

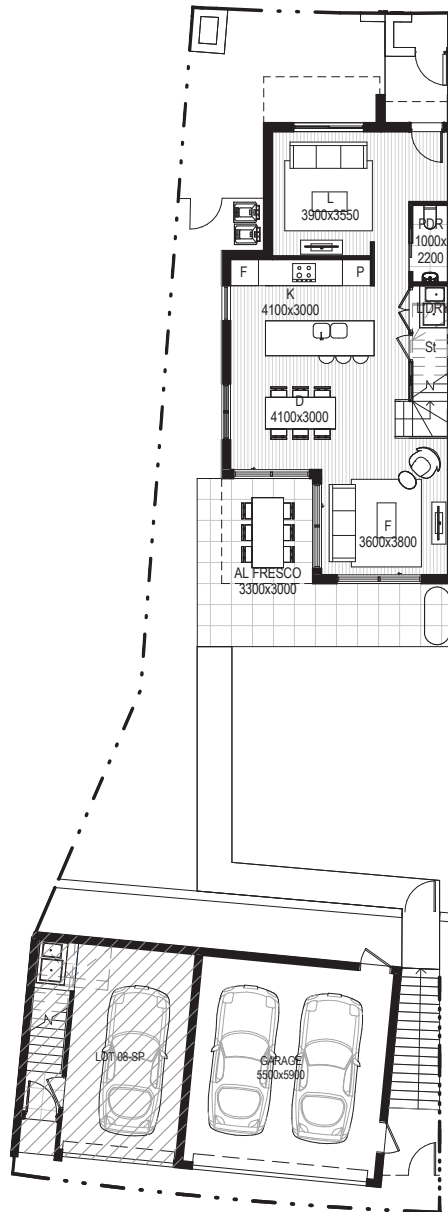
DISCLAIMER

This document is supplied solely for the purpose of providing an indicative floor plan of the nominated lot within the proposed development called "SANA". This document is based on information available at the time of creation (December 2016). Changes to the information contained in this document may occur in accordance with the terms of the contract for sale. The area of the nominated lot is set out in the table of areas. All dimensions and areas are approximate. Furniture, decorative items and plants are shown for indicative purposes only and are not included in the sale. The contract for sale should be reviewed in relation to dimensions, areas, sale inclusions and specifications. This document is not a legally binding obligation or warranty. No liability is accepted for any loss or damage arising as a result of any reliance on this document or its contents.

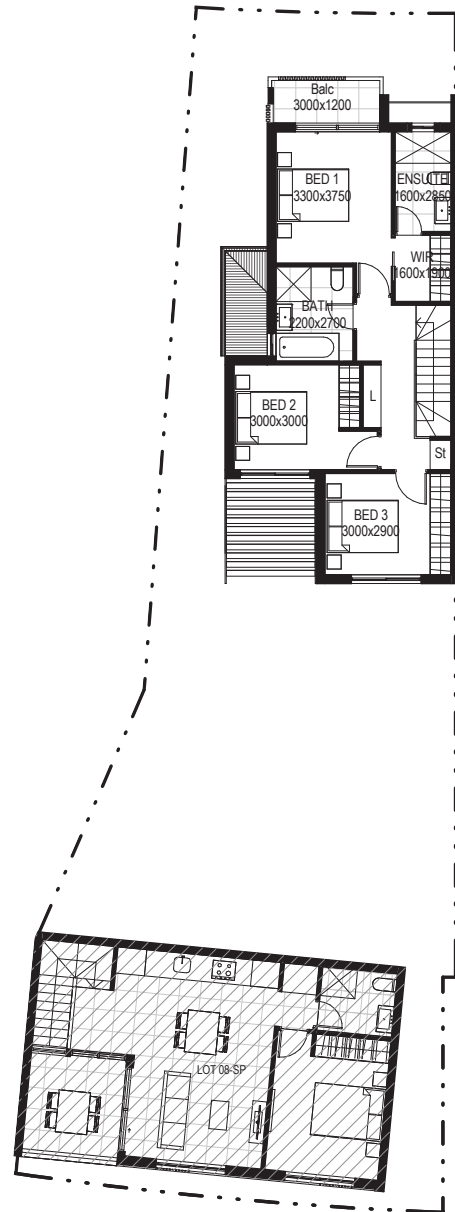
FARLEY

3 2.5 2

LOT 08



Ground floor



First floor



HOUSE AREA	74.28m ²
GROUND FLOOR	70.68m ²
FIRST FLOOR	36.60m ²
GARAGE	15.30m ²
ALFRESCO	15.30m ²
TOTAL	196.86m ²
LOT AREA	
TOTAL	246.10m ²

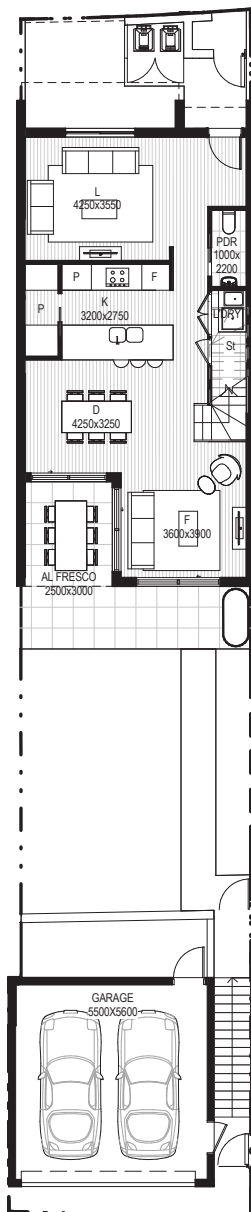
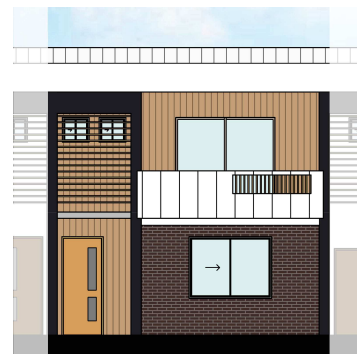
DISCLAIMER

This document is supplied solely for the purpose of providing an indicative floor plan of the nominated lot within the proposed development called "SANA". This document is based on information available at the time of creation (December 2016). Changes to the information contained in this document may occur in accordance with the terms of the contract for sale. The area of the nominated lot is set out in the table of areas. All dimensions and areas are approximate. Furniture, decorative items and plants are shown for indicative purposes only and are not included in the sale. The contract for sale should be reviewed in relation to dimensions, areas, sale inclusions and specifications. This document is not a legally binding obligation or warranty. No liability is accepted for any loss or damage arising as a result of any reliance on this document or its contents.

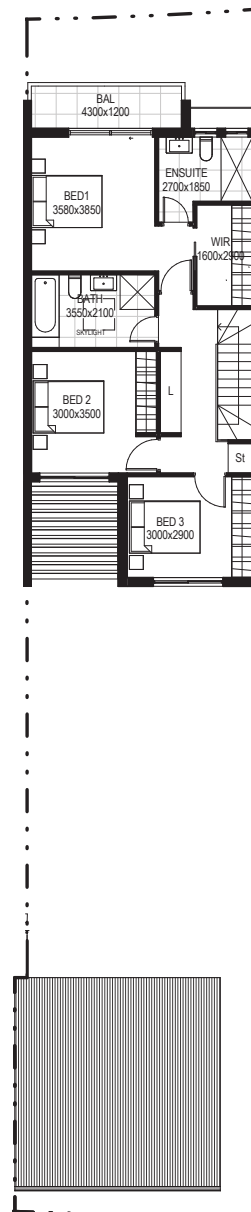
GLADE

3 2.5 2

LOT 09



Ground floor



First floor



HOUSE AREA
GROUND FLOOR
FIRST FLOOR
GARAGE
ALFRESCO
TOTAL

78.58m²
78.58m²
35.40m²
12.00m²
204.56m²

LOT AREA
TOTAL

229.50m²

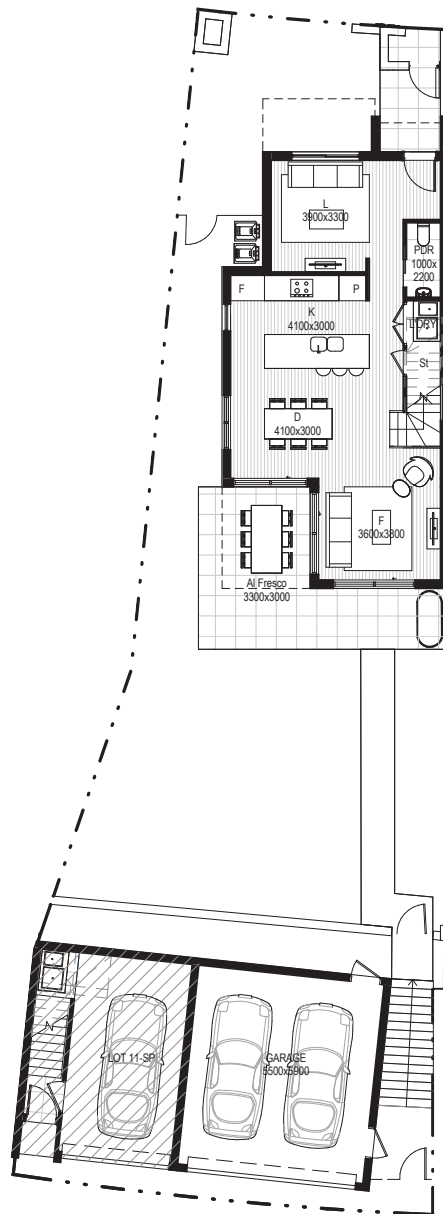
DISCLAIMER

This document is supplied solely for the purpose of providing an indicative floor plan of the nominated lot within the proposed development called "SANA". This document is based on information available at the time of creation (December 2016). Changes to the information contained in this document may occur in accordance with the terms of the contract for sale. The area of the nominated lot is set out in the table of areas. All dimensions and areas are approximate. Furniture, decorative items and plants are shown for indicative purposes only and are not included in the sale. The contract for sale should be reviewed in relation to dimensions, areas, sale inclusions and specifications. This document is not a legally binding obligation or warranty. No liability is accepted for any loss or damage arising as a result of any reliance on this document or its contents.

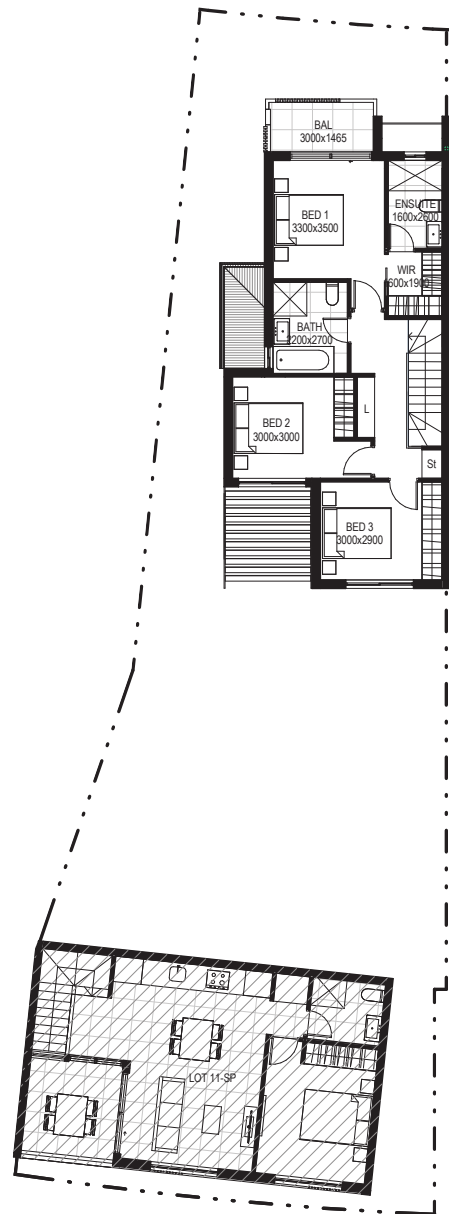
FARLEY

3 2.5 2

LOT 11



Ground floor



First floor



HOUSE AREA	
GROUND FLOOR	72.60m ²
FIRST FLOOR	69.30m ²
GARAGE	36.60m ²
ALFRESCO	15.30m ²
TOTAL	193.80m²
LOT AREA	
TOTAL	262.93m²

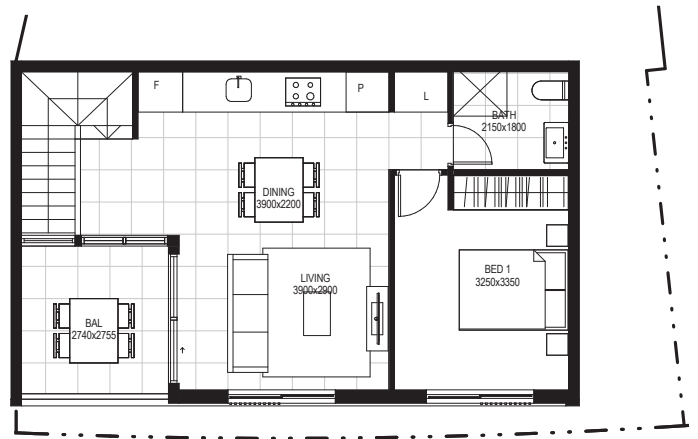
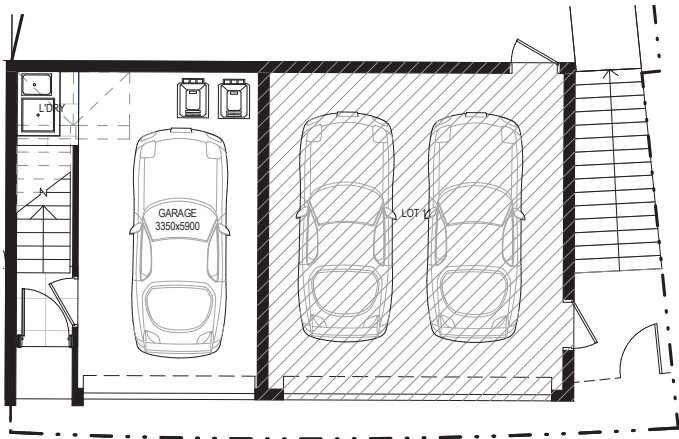
DISCLAIMER

This document is supplied solely for the purpose of providing an indicative floor plan of the nominated lot within the proposed development called "SANA". This document is based on information available at the time of creation (December 2016). Changes to the information contained in this document may occur in accordance with the terms of the contract for sale. The area of the nominated lot is set out in the table of areas. All dimensions and areas are approximate. Furniture, decorative items and plants are shown for indicative purposes only and are not included in the sale. The contract for sale should be reviewed in relation to dimensions, areas, sale inclusions and specifications. This document is not a legally binding obligation or warranty. No liability is accepted for any loss or damage arising as a result of any reliance on this document or its contents.

OZARA

1 1 1

LOT 11B



Ground floor

First floor

HOUSE AREA
GROUND FLOOR
FIRST FLOOR
GARAGE
ALFRESCO
TOTAL

6.40m²
58.68m²
22.00m²
0.00m²
87.08m²

LOT AREA
TOTAL

73.47m²

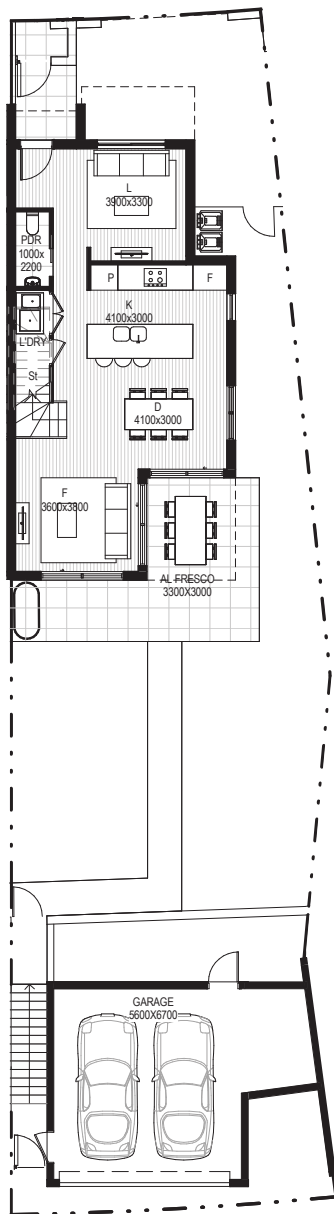
DISCLAIMER

This document is supplied solely for the purpose of providing an indicative floor plan of the nominated lot within the proposed development called "SANA". This document is based on information available at the time of creation (December 2016). Changes to the information contained in this document may occur in accordance with the terms of the contract for sale. The area of the nominated lot is set out in the table of areas. All dimensions and areas are approximate. Furniture, decorative items and plants are shown for indicative purposes only and are not included in the sale. The contract for sale should be reviewed in relation to dimensions, areas, sale inclusions and specifications. This document is not a legally binding obligation or warranty. No liability is accepted for any loss or damage arising as a result of any reliance on this document or its contents.

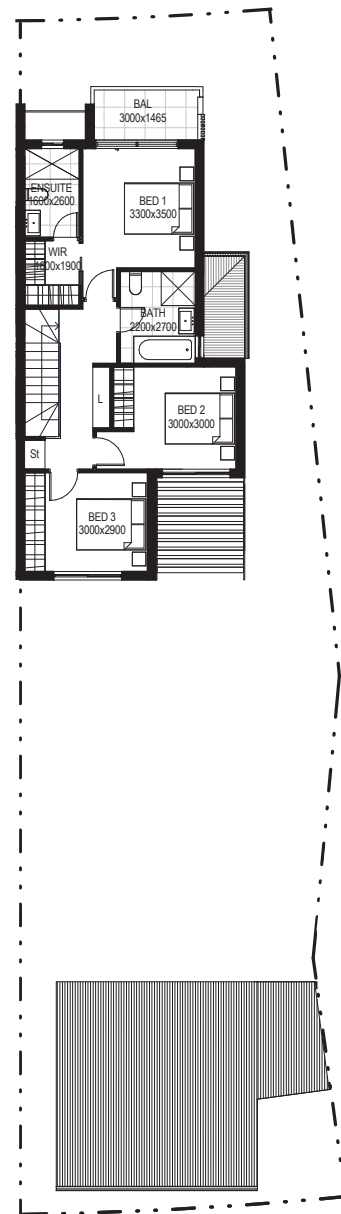
FARLEY

3 2.5 2

LOT 13



Ground floor



First floor



HOUSE AREA	72.60m ²
GROUND FLOOR	69.30m ²
FIRST FLOOR	41.80m ²
GARAGE	15.30m ²
ALFRESCO	199.00m ²
TOTAL	
LOT AREA	
TOTAL	301.90m ²

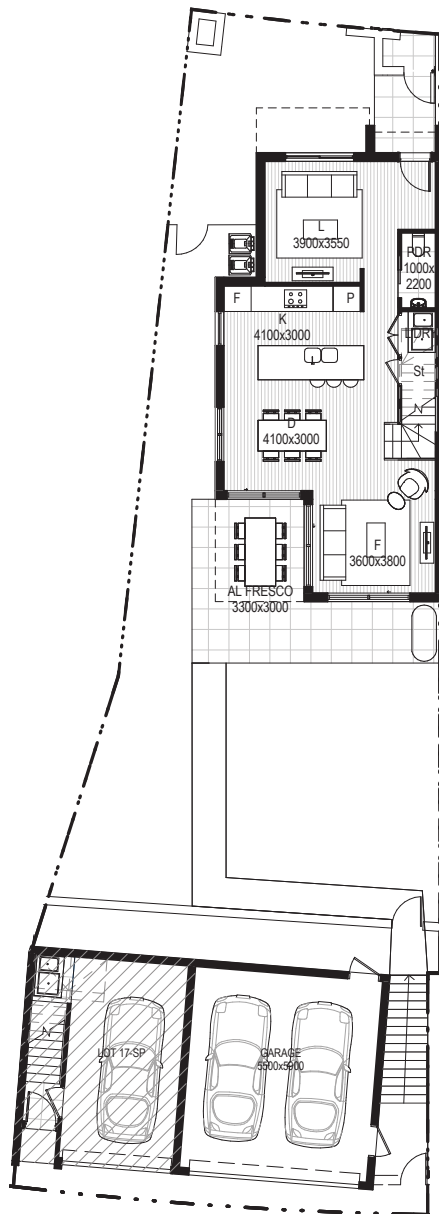
DISCLAIMER

This document is supplied solely for the purpose of providing an indicative floor plan of the nominated lot within the proposed development called "SANA". This document is based on information available at the time of creation (December 2016). Changes to the information contained in this document may occur in accordance with the terms of the contract for sale. The area of the nominated lot is set out in the table of areas. All dimensions and areas are approximate. Furniture, decorative items and plants are shown for indicative purposes only and are not included in the sale. The contract for sale should be reviewed in relation to dimensions, areas, sale inclusions and specifications. This document is not a legally binding obligation or warranty. No liability is accepted for any loss or damage arising as a result of any reliance on this document or its contents.

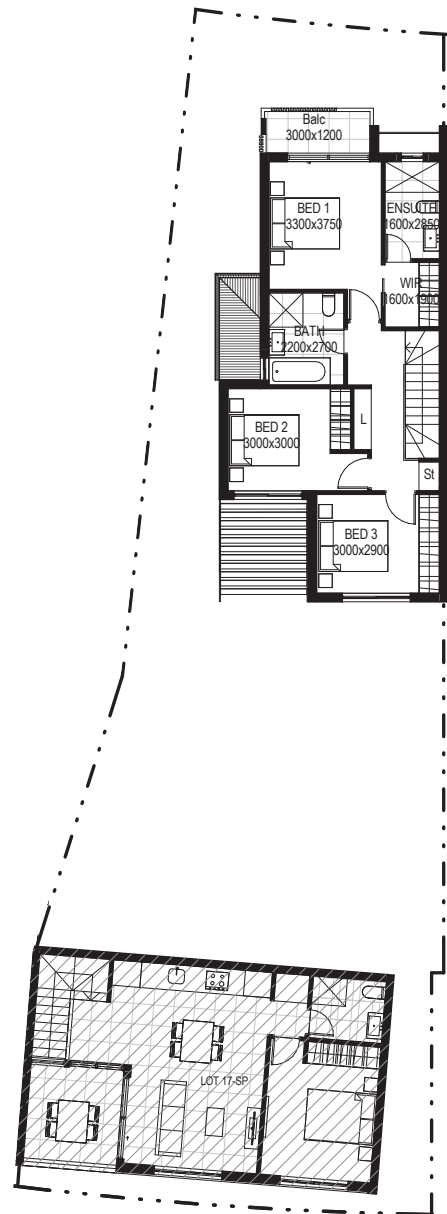
FARLEY

3 2.5 2

LOT 17



Ground floor



First floor



HOUSE AREA	74.28m ²
GROUND FLOOR	70.68m ²
GARAGE	36.60m ²
ALFRESCO	15.30m ²
TOTAL	196.86m ²
LOT AREA	
TOTAL	259.80m ²

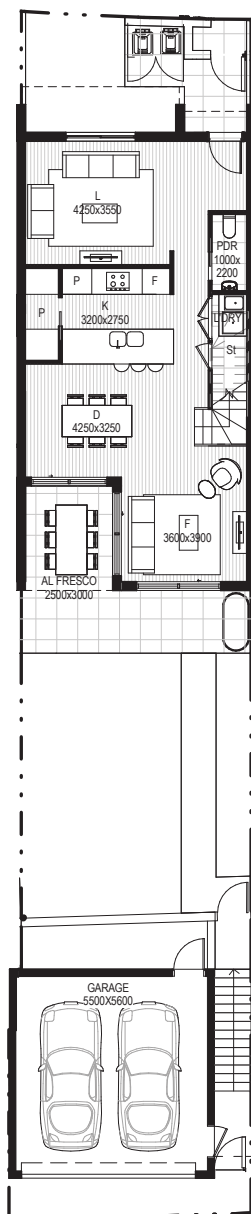
DISCLAIMER

This document is supplied solely for the purpose of providing an indicative floor plan of the nominated lot within the proposed development called "SANA". This document is based on information available at the time of creation (December 2016). Changes to the information contained in this document may occur in accordance with the terms of the contract for sale. The area of the nominated lot is set out in the table of areas. All dimensions and areas are approximate. Furniture, decorative items and plants are shown for indicative purposes only and are not included in the sale. The contract for sale should be reviewed in relation to dimensions, areas, sale inclusions and specifications. This document is not a legally binding obligation or warranty. No liability is accepted for any loss or damage arising as a result of any reliance on this document or its contents.

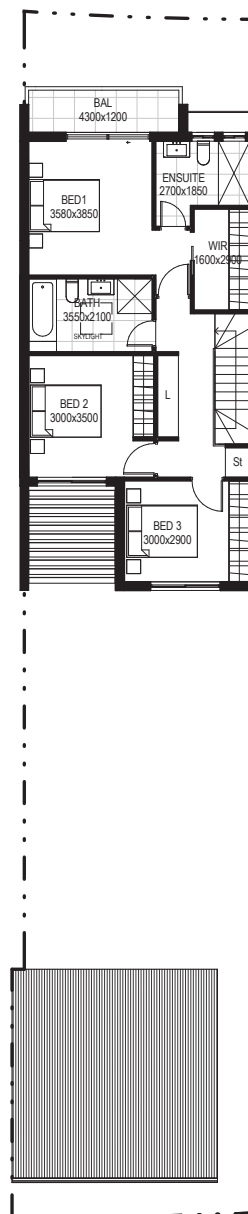
GLADE

3 2.5 2

LOT 18



Ground floor



First floor



HOUSE AREA
GROUND FLOOR
FIRST FLOOR
GARAGE
ALFRESCO
TOTAL

78.58m²
78.58m²
35.40m²
12.00m²
204.56m²

LOT AREA
TOTAL

229.60m²

DISCLAIMER

This document is supplied solely for the purpose of providing an indicative floor plan of the nominated lot within the proposed development called "SANA". This document is based on information available at the time of creation (December 2016). Changes to the information contained in this document may occur in accordance with the terms of the contract for sale. The area of the nominated lot is set out in the table of areas. All dimensions and areas are approximate. Furniture, decorative items and plants are shown for indicative purposes only and are not included in the sale. The contract for sale should be reviewed in relation to dimensions, areas, sale inclusions and specifications. This document is not a legally binding obligation or warranty. No liability is accepted for any loss or damage arising as a result of any reliance on this document or its contents.

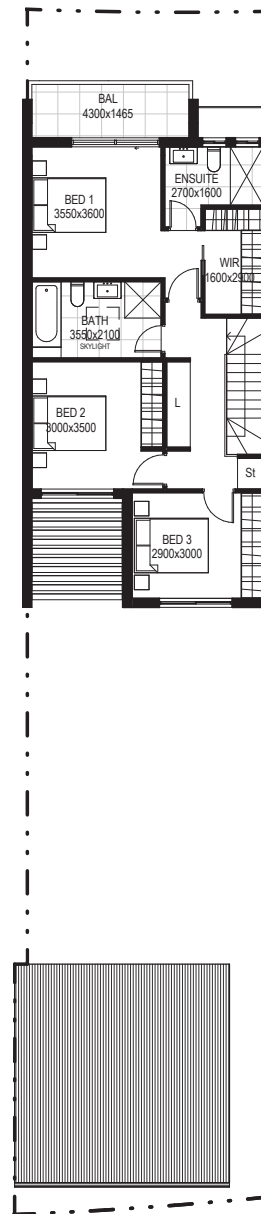
GLADE

3 2.5 2

LOT 21



Ground floor



First floor



HOUSE AREA
GROUND FLOOR
FIRST FLOOR
GARAGE
ALFRESCO
TOTAL

78.58m²
78.58m²
35.40m²
12.00m²
204.56m²

LOT AREA
TOTAL

219.00m²

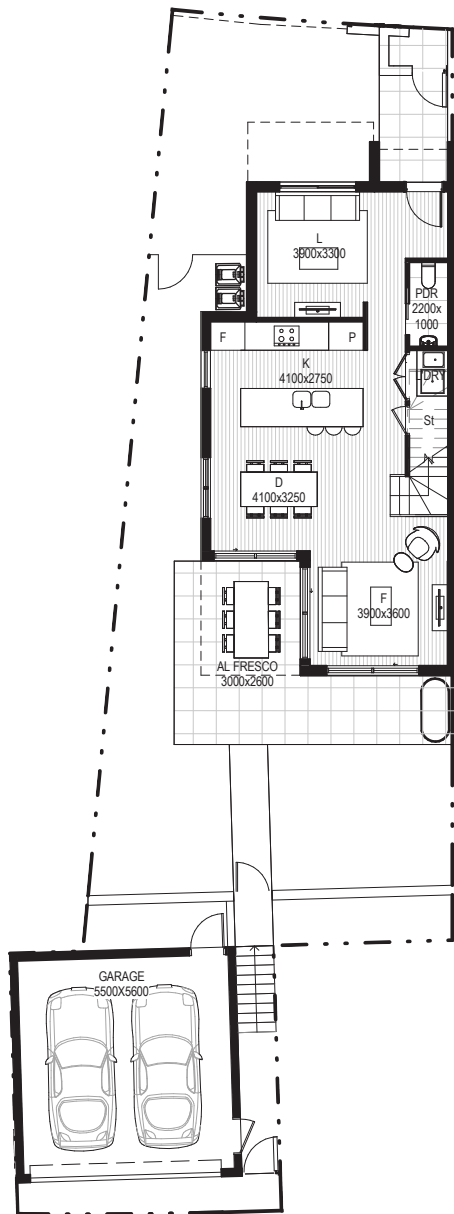
DISCLAIMER

This document is supplied solely for the purpose of providing an indicative floor plan of the nominated lot within the proposed development called "SANA". This document is based on information available at the time of creation (December 2016). Changes to the information contained in this document may occur in accordance with the terms of the contract for sale. The area of the nominated lot is set out in the table of areas. All dimensions and areas are approximate. Furniture, decorative items and plants are shown for indicative purposes only and are not included in the sale. The contract for sale should be reviewed in relation to dimensions, areas, sale inclusions and specifications. This document is not a legally binding obligation or warranty. No liability is accepted for any loss or damage arising as a result of any reliance on this document or its contents.

FARLEY

3 2.5 2

LOT 23



Ground floor



First floor



HOUSE AREA
GROUND FLOOR
FIRST FLOOR
GARAGE
ALFRESCO
TOTAL

74.28m²
70.68m²
35.40m²
15.30m²
195.66m²

LOT AREA
TOTAL

252.90m²

DISCLAIMER

This document is supplied solely for the purpose of providing an indicative floor plan of the nominated lot within the proposed development called "SANA". This document is based on information available at the time of creation (December 2016). Changes to the information contained in this document may occur in accordance with the terms of the contract for sale. The area of the nominated lot is set out in the table of areas. All dimensions and areas are approximate. Furniture, decorative items and plants are shown for indicative purposes only and are not included in the sale. The contract for sale should be reviewed in relation to dimensions, areas, sale inclusions and specifications. This document is not a legally binding obligation or warranty. No liability is accepted for any loss or damage arising as a result of any reliance on this document or its contents.



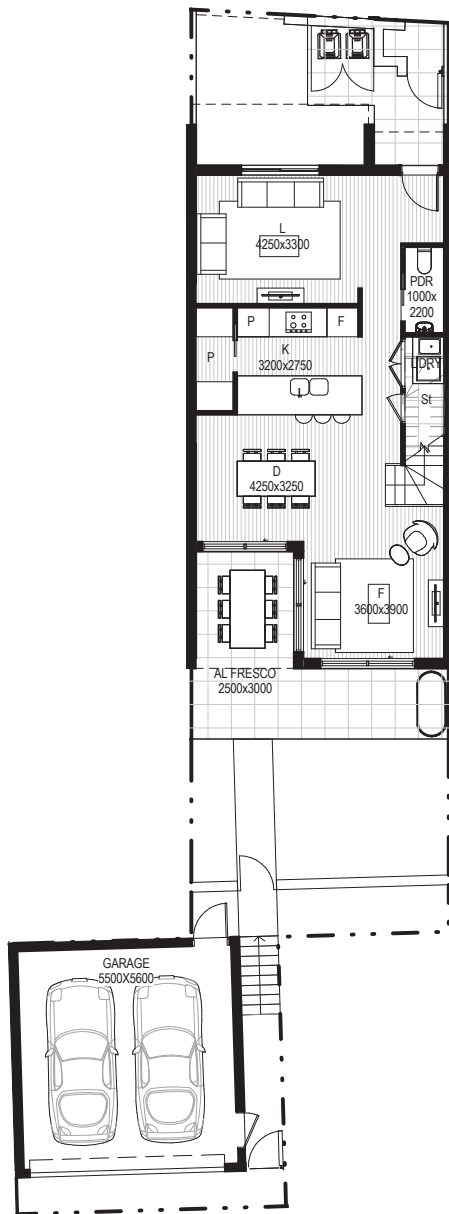
Stockland
it's your place

SANA
Altrove

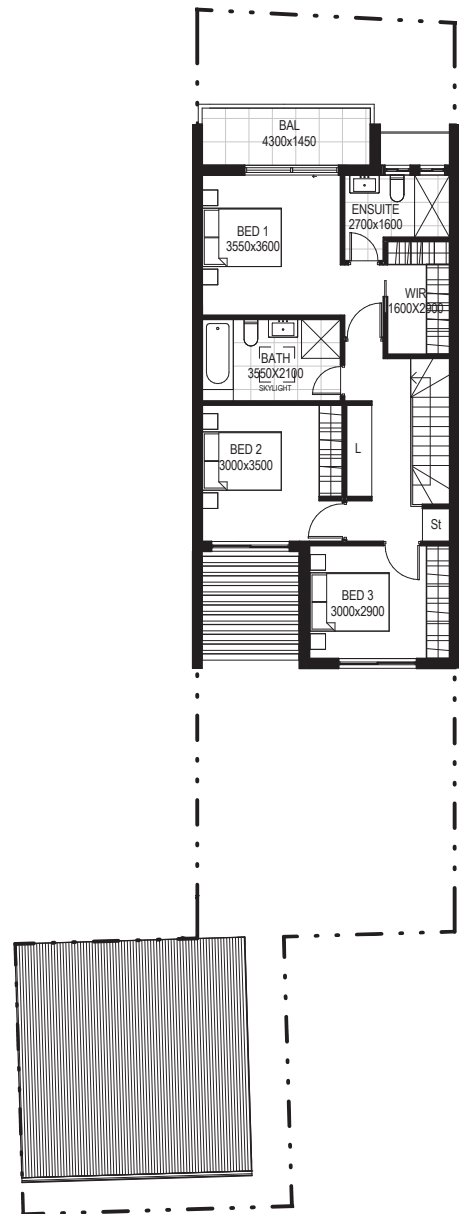
GLADE

3 2.5 2

LOT 24



Ground floor



First floor

HOUSE AREA	78.58m ²
GROUND FLOOR	78.58m ²
GARAGE	35.40m ²
ALFRESCO	12.00m ²
TOTAL	204.56m ²
LOT AREA	
TOTAL	203.20m ²

DISCLAIMER

This document is supplied solely for the purpose of providing an indicative floor plan of the nominated lot within the proposed development called "SANA". This document is based on information available at the time of creation (December 2016). Changes to the information contained in this document may occur in accordance with the terms of the contract for sale. The area of the nominated lot is set out in the table of areas. All dimensions and areas are approximate. Furniture, decorative items and plants are shown for indicative purposes only and are not included in the sale. The contract for sale should be reviewed in relation to dimensions, areas, sale inclusions and specifications. This document is not a legally binding obligation or warranty. No liability is accepted for any loss or damage arising as a result of any reliance on this document or its contents.