

# HOME & LAND PACKAGE AT:



## PACKAGE PRICE:

House Size: 165.25m<sup>2</sup> | 17.76sq'  
@bX'Gjny.' % a &''



5



2.5



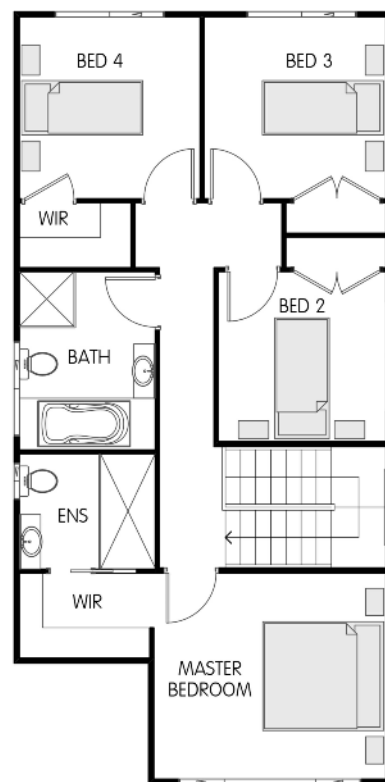
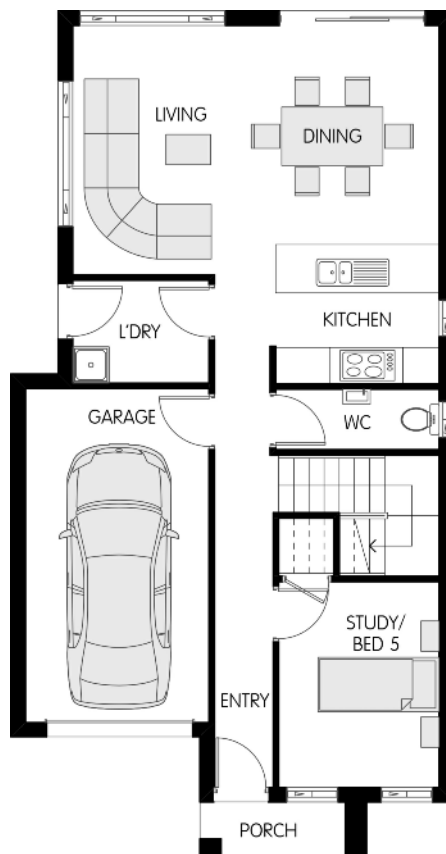
1

## The CRIMSON 18

### Fairview Facade

#### HOME & LAND Package Inclusions: (plus our extensive list of Classic Inclusions)

- Fixed price site costs for up to 1.5m fall
- 2.6m ceilings to downstairs
- 900mm appliances
- 20mm stone tops to kitchen
- Ducted air conditioning
- H2 treated frames & trusses
- Roof sarking
- Insulation to walls & ceiling
- Flyscreens to opening windows
- Garden turf to front and rear
- Tiles to external areas, entry, hallway, kitchen and living
- Carpets to all bedrooms
- Semi-frameless shower screens
- %\$ @B ~I[ \tg
- Letterbox and clothesline
- Coloured Concrete Driveway
- Remote controlled garage door (2 remotes included)
- Floating vanities with kick tile
- Moroka to portico only (as shown)
- BASIX requirements (standard)
- Instantaneous gas hot water system



DISCLAIMER: All images and drawings are for illustrative purposes only and should be used as a guide only. This package is subject to developer and council approval. Clients should refer to their building tender, contract and architectural plans for precise dimensions, specifications and inclusions. Trend Connection Homes reserves the right to withdraw or vary this offer without notice. Changes made to the package may incur additional charges and will be at the cost of the purchaser.

**TREND CONNECTION**  
HOMES

