



House design for illustration only, actual appearance may varies

**\$799,500**  
(Standard)



4



3



1



1



1

LOT NUMBER:

Lot 9

LAND SIZE:

304.6 m<sup>2</sup>  
W11.2m × L27.2m

LAND PRICE:

\$499,500

HOUSE PRICE:

\$300,000

Ground Floor

59.25 m<sup>2</sup>

First Floor

65.74 m<sup>2</sup>

Garage

15.84 m<sup>2</sup>

Porch

3.32 m<sup>2</sup>

Alfresco

5.85 m<sup>2</sup>

Total

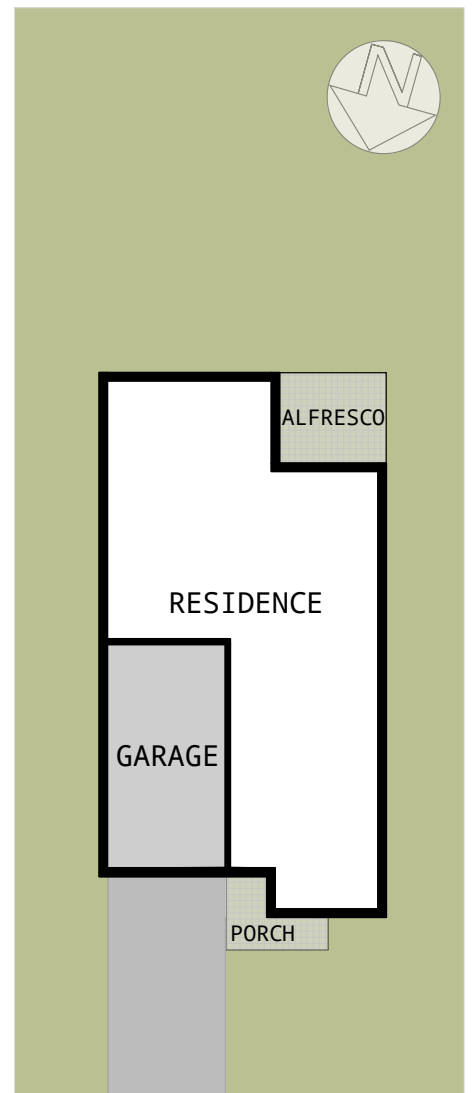
150 m<sup>2</sup>

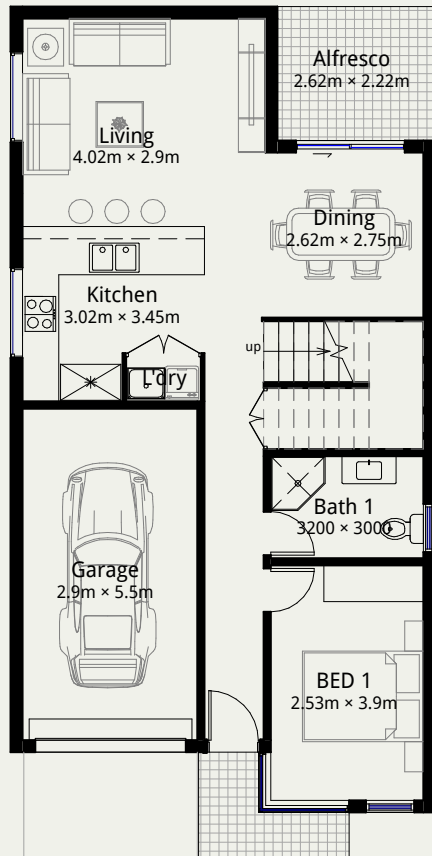
Land Settlement Time:

LAND NOW REGISTERED

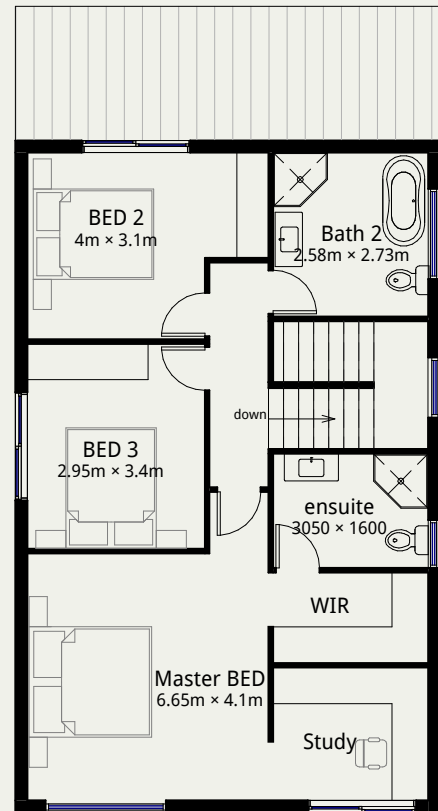
Suburb:

44 Terry Road, Rouse Hill





Ground Floor Plan



First Floor Plan

e-Property Group Copyright © 2019

Ground Floor	59.25 m <sup>2</sup>
First Floor	65.74 m <sup>2</sup>
Garage	15.84 m <sup>2</sup>
Porch	3.32 m <sup>2</sup>
Alfresco	5.85 m <sup>2</sup>
Total	150 m <sup>2</sup>

## Eco-house Standard Highlights:

Engineered and certified STEEL frames.

Colorbond Steel Fencing System.

Autoclaved Aerated Concrete Panel System.

2500mm ceiling height for Ground Floor.

Aluminium SINGLE-GLAZING windows.

20mm Stone Kitchen Bench Top.

Kleenmaid 600mm Kitchen Cooking Range .

Zoned Ducted Air - Condition.

Full Turnkey Package driveway landscaping included.



Whilst reasonable effort has been made to ensure accuracy, pictures, photographs and floor plans are illustrative and there may be some variation between this depiction and the detailed plans. Pictures and photographs may include items not included in E-Property Group specifications. See your sales agent for detailed home for landscape plans and inclusions. "House and land package price is correct at time of printing though is subject to change without notice. Stamp duty on land, legal fees, titles and property reports are not included in price. Total square meters and square size measurement of this house is calculated by measuring from the external side of external walls, where no external walls exist, for the purpose of measuring building area such as porticos, balconies or outdoor rooms) E-Property Group assumed a straight line between the exterior wall so columns, if this is a National Rental Affordability Scheme approved property, see fahesia.gov.au for details. E-Property Group Pty Ltd (ACN613499362)