

NSW HOUSE & LAND PACKAGE

FIXED PRICE, TURN KEY

(07) 5665 0088
gdevelopments.com.au



NOTE: Colorbond roof a standard inclusion from 5 August 2019

\$614,500

LAND REGISTERED

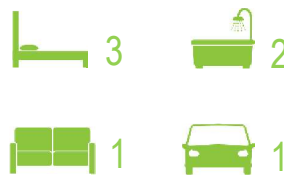
LAND (300m²) | \$364,000
HOUSE (208 m²) | \$250,500
RENTAL INCOME | \$480 - \$530

Lot 767 Crystal Palace Way, Leppington

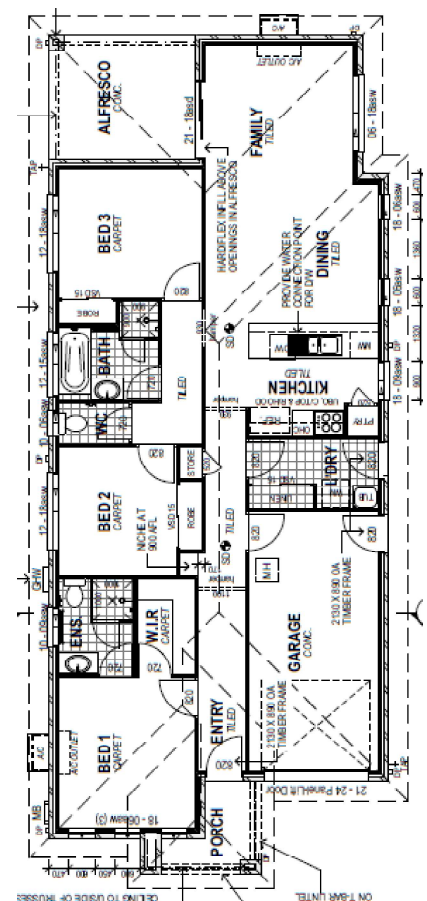
INCLUSIONS

- Turnkey finish & fixed site costs
- Termite protection
- Connection to grey water tank
- Colorbond roof
- 20mm manufactured stone benchtop in kitchen
- Cold water to fridge space for fridge ice-maker
- Stainless steel kitchen appliances
- Reverse cycle/split system air-conditioner in living and main bedroom
- 2550mm high ceilings (lower level only)
- Ceiling fans
- Undercover alfresco area
- Fully fenced, turfed & landscaped

VALDERRAMA PLANTATION



LIVING	108.6
GARAGE	20.1
ALFRESCO	9.7
PORCH	4.0
TOTAL	142.4



NOTE: Ceiling height standard 2550mm as at 5 August 2019

DISCLAIMER: Facade, floor plan and furniture shown is for illustrative purposes - not included in purchase. Window location and sizes may change across styles.

Photographs and illustrations as a visual aid only. G Developments give(s) no warranty and make(s) no representation as to the accuracy or sufficiency of any content or statement contained in this brochure and accepts no liability for any loss which may be suffered by any person who relies either wholly or in part upon the information presented.