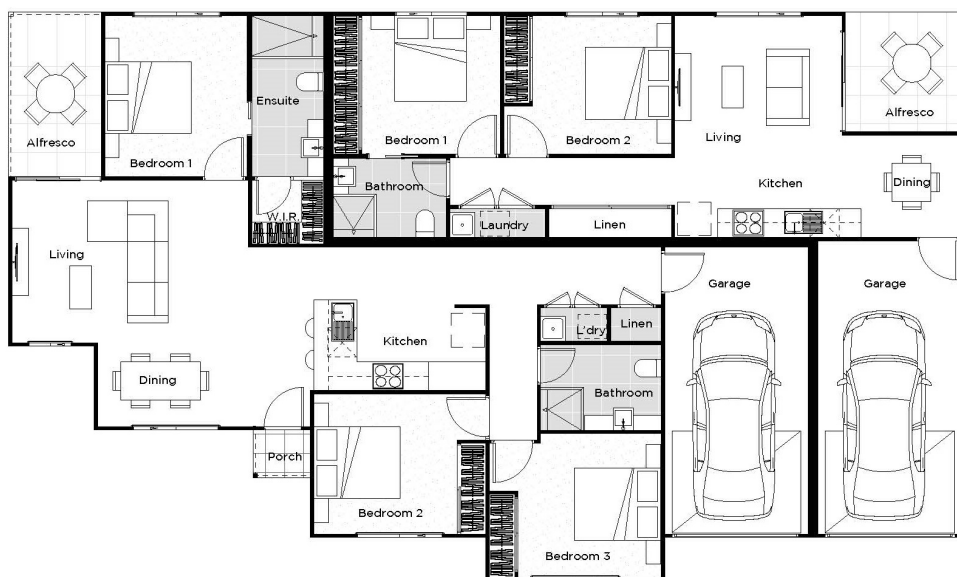


ANG 204 F1

3+2  2+1  1+1 MAIN
MAIN DWELLING

LIVING	93.84m ²
GARAGE	19.15m ²
ALFRESCO	4.95m ²
PORCH	1.20m ²

SUB TOTAL 119.15m²

AUXILIARY UNIT

LIVING	59.05m ²
GARAGE	19.68m ²
ALFRESCO	6.25m ²

SUB TOTAL 84.98m²**TOTAL 204.13m²**

FEATURES

- 3 + 2 BEDROOMS
- 2 + 1 BATHROOM
- DUAL KEY LIVING
- PREMIER FINISH
- ENSUED MASTER BEDROOM

Illustration for marketing purposes only. All materials, colours, details & landscaping items may be amended or varied & reference may be made to actual plans. Floor plan is generic and applies to all facades which may vary slightly, reference must be made to actual plans. Mirror reverse version may apply at the architects discretion.