



ASTER 20

4 Bed | 2.5 Bathroom | 1 Car

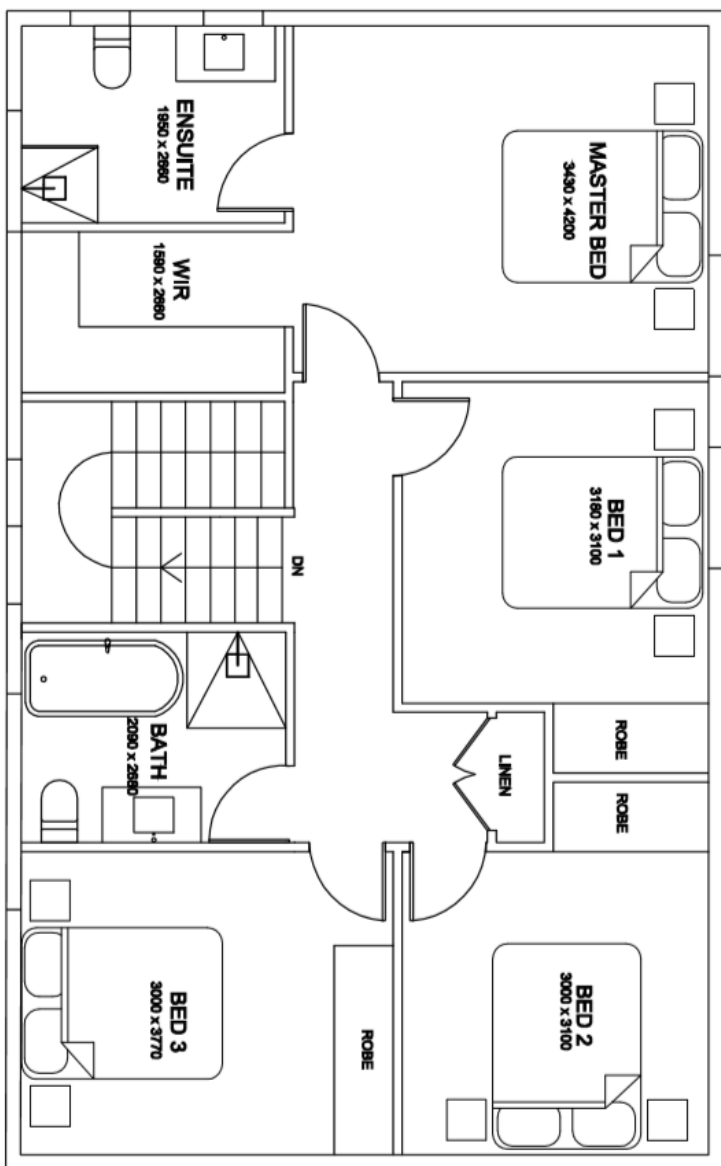
35 Ingleburn Road Leppington NSW 2179

| Lot 13 | LAND SIZE 329.1 SQM | PACKAGE PRICE: \$652,000 (Fixed Cost)

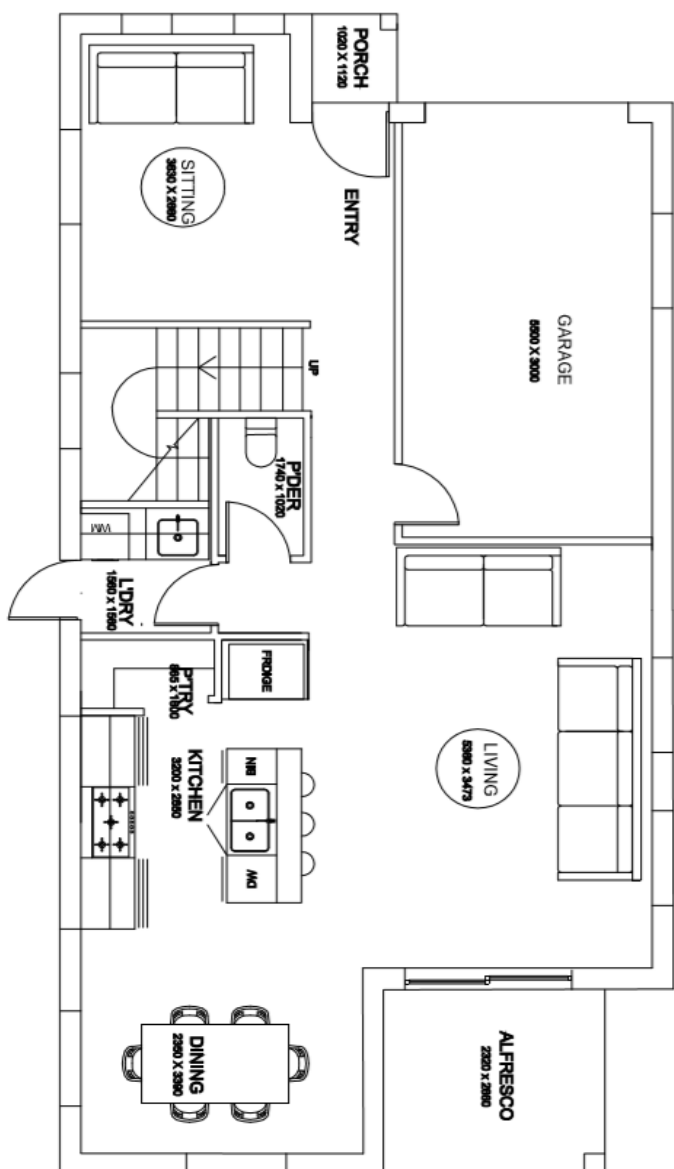
| Land: \$376,500 | House: \$275,500

Inclusion list

- Standard site cost
- 2600mm ceiling height to ground and 2400mm to first floor.
- Treated timber house frame
- Modern design with quality inclusions throughout
- Open plan living, dining and kitchen area
- Stone kitchen bench top
- Generous size bedrooms all with built in robes
- Designer aluminum frame sliding doors and windows with clear glass and fly screens
- 600 x 600 Porcelain floor tiles to all living areas, kitchen and all wet areas and carpet/laminate to bedrooms
- Energy efficient European appliances to save water and power in your house.
- Ducted air conditioning with smart control and zones
- Sectional Garage Door including Remote
- 3 Coat Paint System throughout
- Television, telephone, NBN provision
- Concrete driveway



First Floor



Ground Floor