




House design for illustration only, actual appearance may varies

\$725,000
(Upgrade)

**\$10,000 Discount
Limited Time Only!!**
(House & Land for \$715,000)

 4
  2
  2
  1

LOT NUMBER: Lot 18, Lot 19

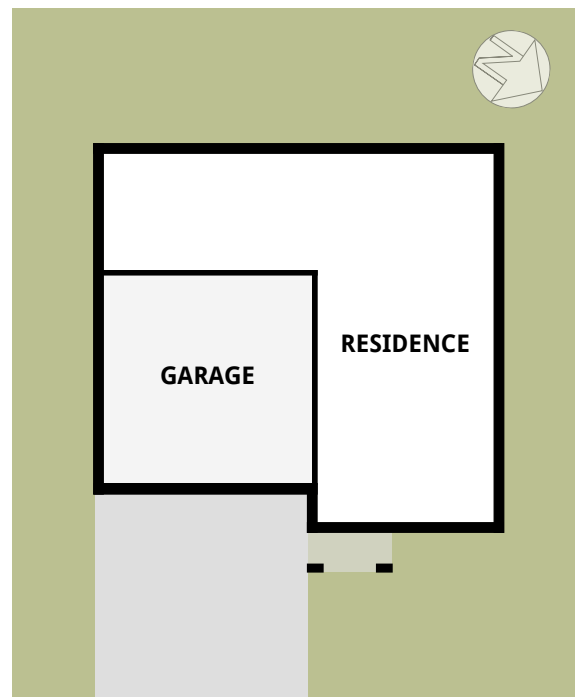
LAND SIZE: 274 m²
 Lot 18: W15m x L18.3m
 Lot 19: B10.6+7.1m x L13.5m

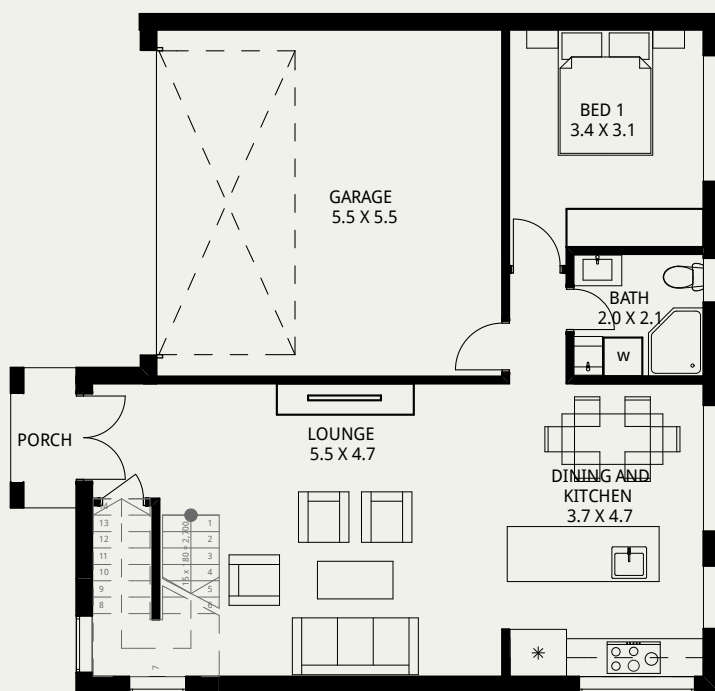
LAND PRICE: \$385,000

HOUSE PRICE: \$340,000

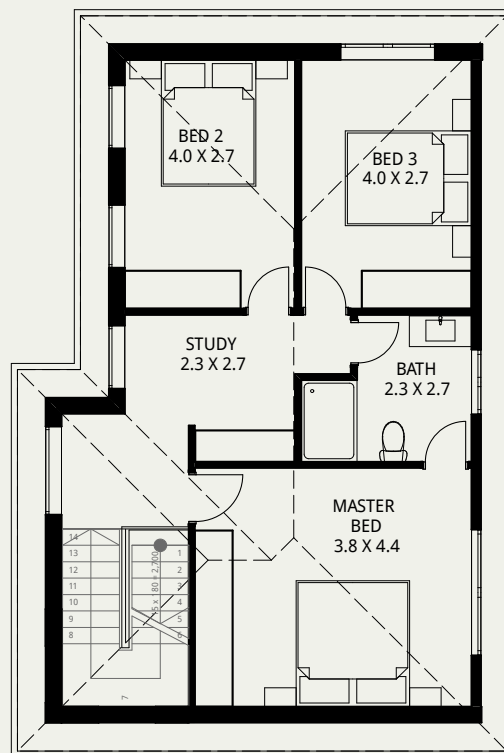
Ground Floor	55 m ²
First Floor	64 m ²
Garage	31 m ²
Porch	2 m ²
Total	152 m ²

Land Settlement Time: Land Registered Now
 Suburb: RIVERSTONE





GROUND FLOOR PLAN



FIRST FLOOR PLAN

Ground Floor	55 m ²
First Floor	64 m ²
Garage	31 m ²
Porch	2 m ²
Total	152 m ²

e-Property Group Copyright © 2019

EP-house Upgrade Highlights:

Engineered and certified timber frames.

Colorbond Steel Fencing System.

Brick veneer Wall System.

2700mm ceiling height for Ground Floor.

Aluminium DOUBLE-GLAZING windows.

40mm Stone Kitchen Bench Top.

Kleenmaid 900mm Kitchen Cooking Range .

Zoned Ducted Air - Condition.

Full Turnkey Package driveway landscaping included.



E-PROPERTY Group Pty Ltd

www.epropertyaus.com

Level 35, One International Towers

100 Barangaroo Avenue Sydney, NSW 2000



Whilst reasonable effort has been made to ensure accuracy, pictures, photographs and floor plans are illustrative and there may be some variation between this depiction and the detailed plans. Pictures and photographs may include items not included in E-Property Group specifications. See your sales agent for detailed home for landscape plans and inclusions. "House and land package price is correct at time of printing though is subject to change without notice. Stamp duty on land, legal fees, titles and property reports are not included in price. Total square meters and square size measurement of this house is calculated by measuring from the external side of external walls, where no external walls exist, for the purpose of measuring building area such as porticos, balconies or outdoor rooms) E-Property Group assumed a straight line between the exterior wall so columns, if this is a National Rental Affordability Scheme approved property, see fahesia.gov.au for details. E-Property Group Pty Ltd (ACN613499362)