

UNIT 10 - 11 JORL CRT, BUDERIM



*Image for display purposes only, subject to change.

TOWNHOUSE - \$384,900

2 2 1



COMPLETION ESTIMATE

November 2019

GARAGE	20m ²
INTERNAL	74m ²
EXTERNAL	32m ²
TOTAL SIZE	126m ²



1st TENANT GUARANTEE



TENANT READY



RESALE READY

INITIAL DEPOSIT

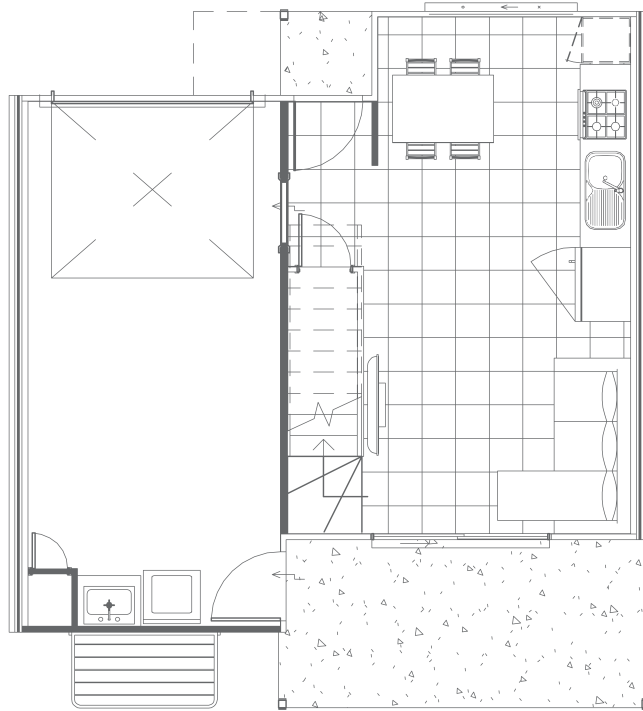
\$1,000

BALANCE OF DEPOSIT

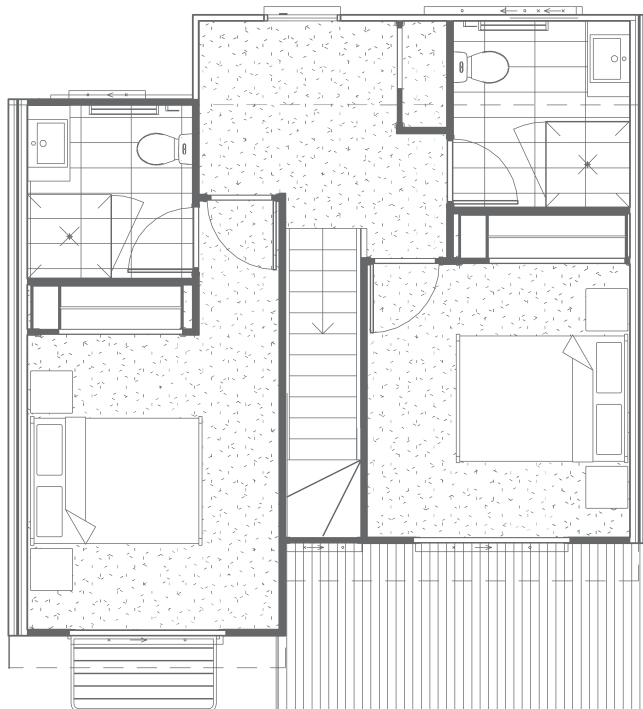
\$37,490



UNIT 10 - 11 JORL CRT, BUDERIM



Level 1



Level 2