

HOUSE & LAND

Fixed Price Package
\$895,000



Rosedale 19 – Lot 902

The Waters Stage 2 - Box Hill

| | |
|-------------------------|----------------------|
| Lot Number: | 902 |
| Location: | Box Hill |
| Land Size: | 413.7m ² |
| External Colour: | Slate |
| Internal Colour: | Nickel |
| House Design: | Rosedale 19 |
| Facade: | Trend MK4 |
| House area: | 179.26m ² |
| Width: | 11.37m |
| Depth: | 17.30m |
| Inclusions: | Classic |
| Upgrades: | Spectrum Heritage |

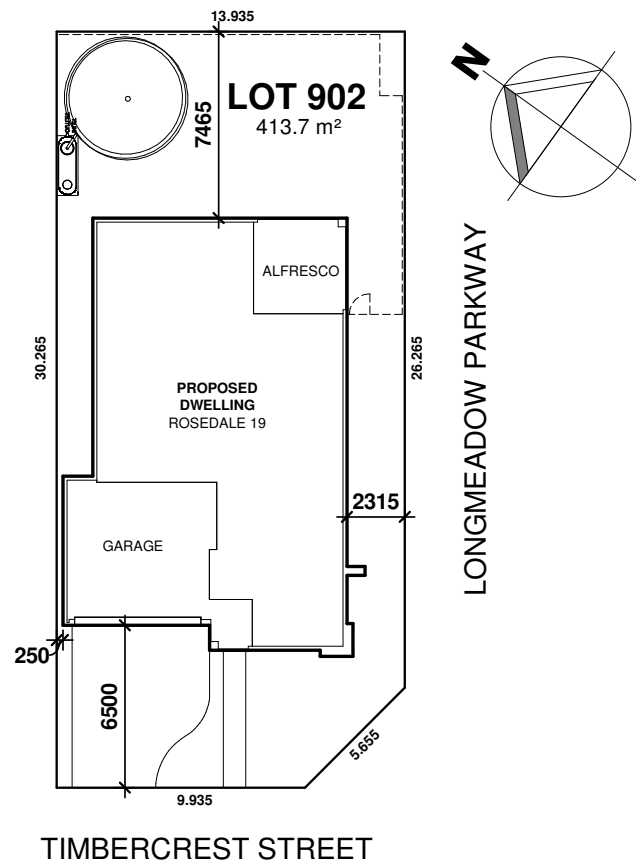
4 2 2

Rosedale 19:

The Rosedale 19 offers comfortable family living with an open plan layout, complete with 4 spacious bedrooms, 2 bathrooms and a double garage. Enjoy entertaining with the outdoor alfresco area or enjoy relaxing in the large Master suite with walk in robe and ensuite.

This package contains classic Australian House and land Inclusions and spectrum upgrades.

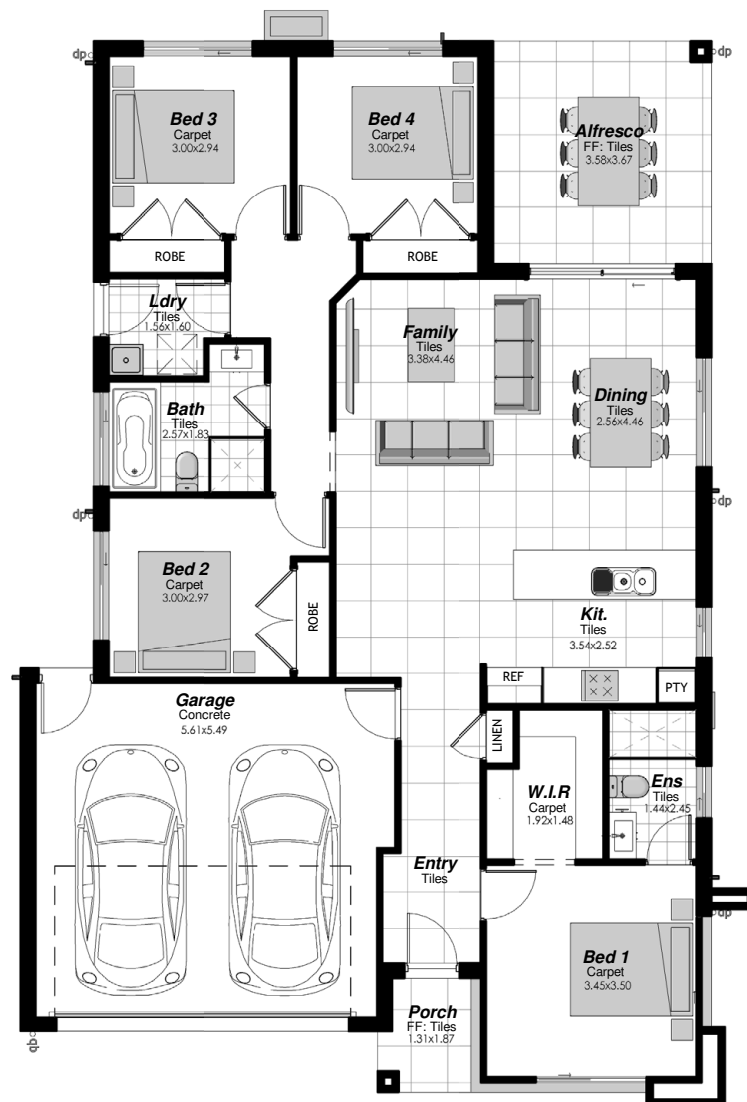
4 2 2



Images and colours are shown for illustrative purposes and may not always represent the final product. Area, depth, width and layout may vary slightly depending on facade and site conditions. Design and prices may be subject to conditions of developer and/or Council approval. Eaves may change due to Council condition and/or zero lot location. Land size is subject to change pending on DA approval and land registration. Australian House and Land has the right to alter prices and inclusions without prior notice. All designs are copyright to Australian House and Land.

Land Price: \$553,200

Date issued: 5.09.18



Spectrum Heritage Upgrades:

- Soft landscaping - turf and basic garden beds.
- Coloured on concrete driveway and path. (Where applicable)
- Fold down clothesline.
- Face brick pier with built in letterbox.
- Fencing. (Estate design guidelines apply)
- Colorbond Roof with Anticon Blanket.
- 1x Split system air conditioner to main living.
- Remote control unit to garage door.
- TV antennae.
- Flyscreens to operable windows and sliding doors.
- Tiling and carpet throughout. (as per plan - Selection from standard range)
- Stone bench tops to kitchen - 20mm pencil edge.
- Stainless steel dishwasher.
- Vertical blinds to all windows and sliding doors. (Excl. wet areas)
- Oyster light fittings to ground floor living areas.
- 3 coat paint system in Taubmans Endure.
- Alarm System.