

**\$846,500**



## Bardia

Land Register: Early-Mid 2020

Lot 6026

Proposed Rd

4



3



2



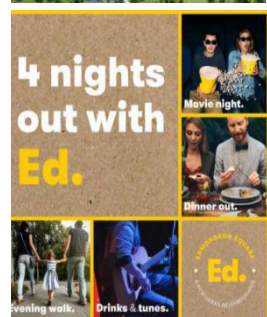
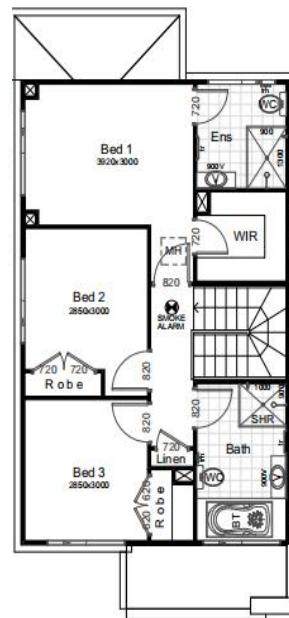
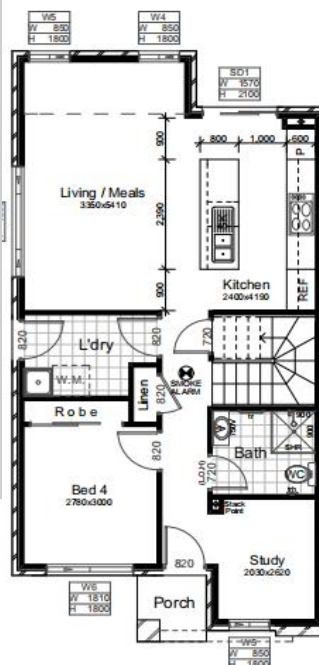
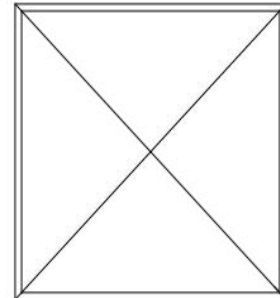
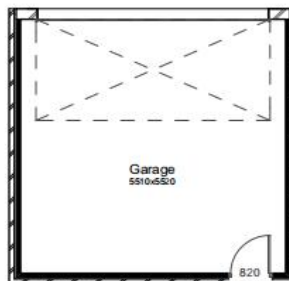
Land:300m2

Land Price:\$479,000

House: 175.68m2

### YOUR NEW HOME INCLUDES

- Upgrade Interior
- Fixed Price
- 2.6m Ceiling
- 900mm European Style Kitchen Appliance
- CaesarStone tops to kitchen
- Central Ducted Air Condition
- H2 Treating Frames&Trusses
- Roof Sarking
- Insulation to Walls&Ceiling
- Flyscreens to opening windows
- Garden turf to front and rear
- Tiles to porch, entry, kitchen&living
- Antenna
- Blinds&Clothing line
- Driveway, Path
- Remote control garage



All photos, illustrations and plans are for illustrative purposes and should be used as a guide only. Package prices are subject to availability. Prices are subject to change without notice.



# Quality Upgrades at NO COST

WHEN YOU SIGN A BUILDING CONTRACT  
WITH TREND CONNECTION



IMPORTANT NOTICE: Images in this brochure may depict items not supplied by Trend Connection (such as landscaping and furniture) and other optional variations to the house which are not included in this package and incur additional charges. Some images may depict fixtures, finishes and features not supplied by Trend Connection such as decking, window and household furnishings. For detailed home pricing, including details about the standard inclusions and charges for optional variations, please speak to one of our consultants.

## QUALITY INCLUSIONS FOR A LIMITED TIME:

- ✓ 900mm stainless steel appliances including:  
Free standing cooktop & oven combo
- ✓ 900mm canopy ducked rangehood
- ✓ Upgraded internal doors
- ✓ Pendant lights to island bench
- ✓ Modern lighting to media & living
- ✓ Single waterproof powerpoint to alfresco
- ✓ Upgrade to timber stained front entry door
- ✓ Additional TV outlet to Master bed room
- ✓ Microwave provision to kitchen
- ✓ Combination exhaust fan and light to main bathroom & ensuite
- ✓ 4 additional powerpoints  
\*location to be nominated at colour stage\*
- ✓ Mirrored sliding doors to wardrobes
- ✓ Freestanding stainless steel dishwasher

