



## KEILOR 212 (3+2) ATTACHED AUXILIARY UNIT – METRO FACADE

FAÇADE IS FOR ILLUSTRATION PURPOSES ONLY.

 3+2
  2+1
  1+1
  1+1

### LOT 6 CHAMBERS CHASE ESTATE, PARK RIDGE

Land Size	369 m <sup>2</sup>
Land Price	\$217,000
Registration	January 2020
House/Roof Area	211.63 m <sup>2</sup>
House Price	\$322,112

### TOTAL FIXED TURNKEY PRICE:

# \$539,112

Price Valid Until: 09/02/20

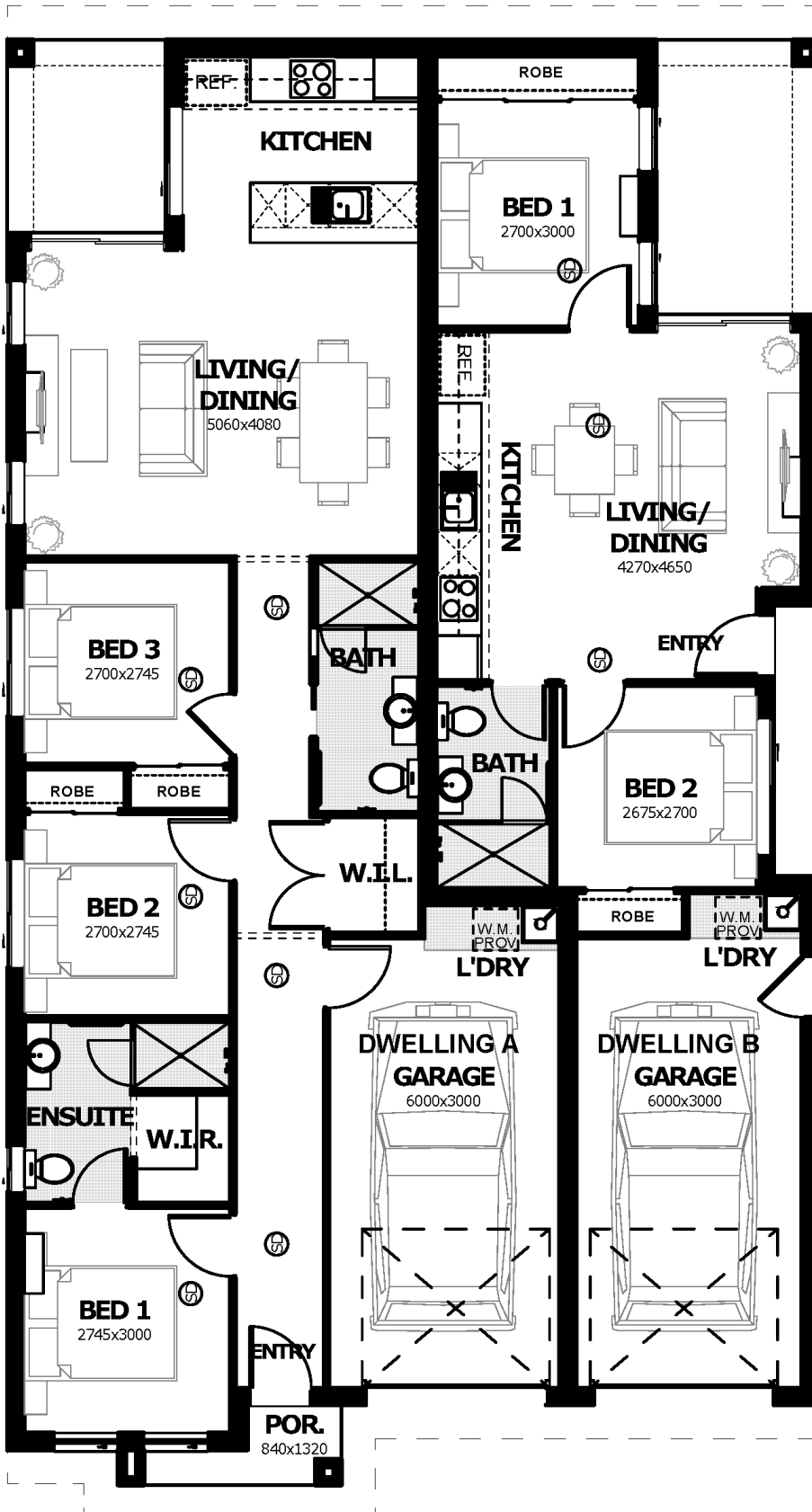
### PACKAGE HIGHLIGHTS

- ✓ Full Turnkey, Fixed Price, Silkwood Gold Inclusions
- ✓ **Large range of face bricks to all façades**
- ✓ Exposed aggregate driveway & turfing to entire lot
- ✓ **Good neighbour fencing and landscaping package**
- ✓ Three coat Dulux premium paint system
- ✓ Quality floor coverings - carpet & tiles throughout
- ✓ Superior LED lighting package throughout entire house (excl. garage)
- ✓ Designer kitchen with Westinghouse stainless steel cooktop, oven & range hood
- ✓ Overhead cupboards & stainless-steel dishwasher
- ✓ 3 x split system air conditioners
- ✓ Ceramic tiled splashbacks to kitchens & laundries
- ✓ 20mm stone benchtops to kitchens and bathrooms
- ✓ **Logan city council infrastructure charges included**
- ✓ Building approval and water application fees included
- ✓ Colorbond roof & barrier screens to windows & doors
- ✓ Ceiling fans in every bedroom, living area & alfresco
- ✓ Approved Fire Separation wall between Dwelling A & B
- ✓ **BAL 12.5 Bushfire construction requirement included**

09/12/19 GOLD PR640

Terms, conditions, fees and government charges may apply. The illustrations provided are artist impressions only and may include alternative finishes and features to those supplied by Silkwood Homes such as landscaping and fencing. All images and floor plans remain in the property of Silkwood Homes and are protected by Copyright. Land and prices are subject to availability and can change without notice. Silkwood Homes reserves the right to amend specifications and prices without notice. Silkwood Homes QLD ABN: 65 149 767 966 QBCC: 1218048 | Silkwood Homes NSW ABN: 14 156 406 352 NSW Licence 248052C

## KEILOR 212 (3+2)



### Dwelling A:

Living	90.57 m <sup>2</sup>
Garage	20.90 m <sup>2</sup>
Porch	1.99 m <sup>2</sup>
Alfresco	5.44 m <sup>2</sup>
Soffit Area	6.59 m <sup>2</sup>
<b>Total</b>	<b>125.49 m<sup>2</sup></b>

### Dwelling B:

Living	50.19 m <sup>2</sup>
Garage	22.02 m <sup>2</sup>
Porch	2.17 m <sup>2</sup>
Alfresco	7.96 m <sup>2</sup>
Soffit Area	3.84 m <sup>2</sup>
<b>Total</b>	<b>86.14 m<sup>2</sup></b>
<b>Grand Total</b>	<b>211.63 m<sup>2</sup></b>