

**\$923,900**

## Bardia

Land Register: Registered

Lot 584

Proposed Rd

4



3



1



Land: 342m<sup>2</sup>

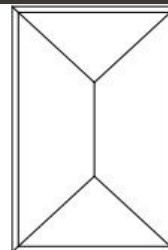
Land Price: \$569,900

House: 170.92m<sup>2</sup>

### YOUR NEW HOME INCLUDES

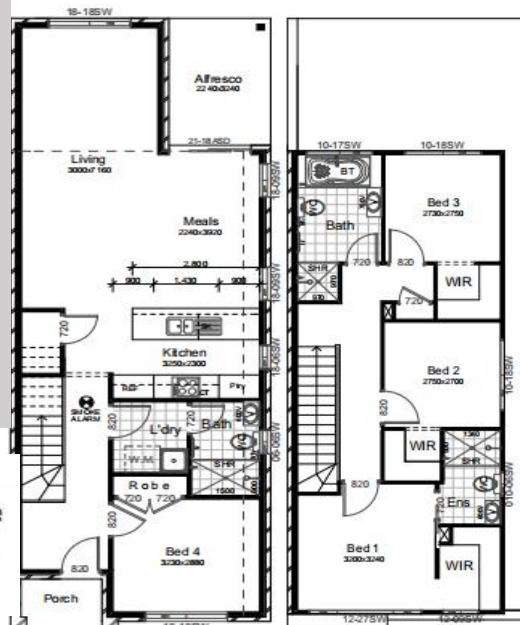
- Upgrade Interior
- Fixed Price
- 2.6m Ceiling
- 900mm European Style Kitchen Appliance
- CaesarStone tops to kitchen
- Central Ducted Air Condition
- H2 Treating Frames&Trusses
- Roof Sarking
- Insulation to Walls&Ceiling
- Flyscreens to opening windows
- Garden turf to front and rear
- Tiles to porch, entry, kitchen&living
- Antenna
- Blinds&Clothing line
- Driveway, Path
- Remote control garage

All photos, illustrations and plans are for illustrative purposes and should be used as a guide only. Package prices are subject to availability. Prices are subject to change without notice.



5.720

5.720



**4 nights out with Ed.**



# Quality Upgrades at NO COST

WHEN YOU SIGN A BUILDING CONTRACT  
WITH TREND CONNECTION

VALUED AT  
\$5,999



IMPORTANT NOTICE: Images in this brochure may depict items not supplied by Trend Connection (such as landscaping and furniture) and other optional variations to the house which are not included in this package and incur additional charges. Some images may depict fixtures, finishes and features not supplied by Trend Connection such as decking, window

## QUALITY INCLUSIONS FOR A LIMITED TIME:

- ✓ 900mm stainless steel appliances including: canopy rangehood, freestanding oven & gas cooktop
- ✓ Upgraded internal doors
- ✓ Lighting pack: Oyster lights to bedrooms, Jean lights to bathrooms & porch, Pendant lights to kitchen island and 12 LEDs to living areas
- ✓ Single waterproof powerpoint to alfresco
- ✓ Upgrade to timber stained front entry door
- ✓ Additional TV outlet to sitting room
- ✓ Microwave provision to kitchen
- ✓ Combination exhaust fan and light to main bathroom & ensuite
- ✓ 4 additional powerpoints  
\*location to be nominated at colour stage\*
- ✓ Mirrored sliding doors to wardrobes
- ✓ Freestanding stainless steel dishwasher

