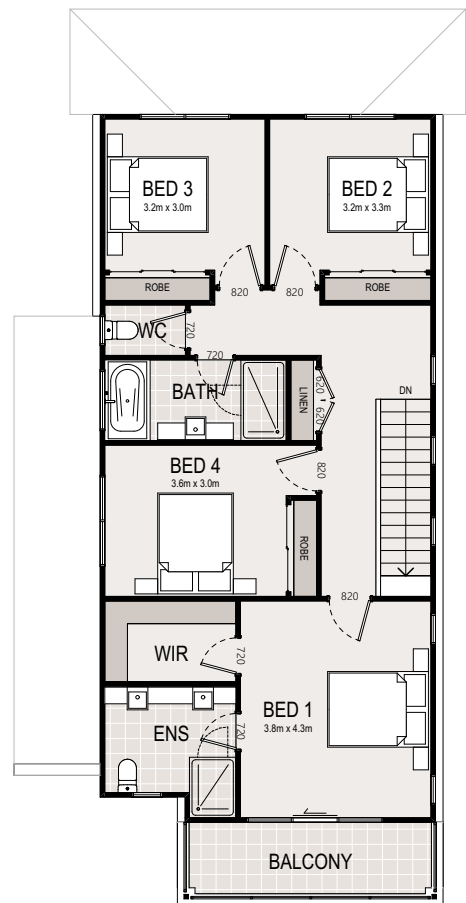
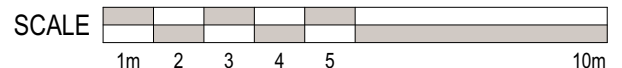


**GROUND FLOOR PLAN**



**FIRST FLOOR PLAN**



Creation Homes Pty Ltd  
Level 9, 77 Pacific Highway,  
North Sydney NSW, 2060.  
(P) 02 8912 9216 (F) 02 8912 9299

## RIVERBANK 24

### TRADITIONAL

© The plan & design of this house is owned by Creation Homes & under the copyright act of 1968 cannot be reproduced in any shape or form without prior written authorisation. Any doing so will be liable for action under the act.

4  2  1	
Ground Floor Living	93.47m <sup>2</sup>
First Floor Living	92.51m <sup>2</sup>
Garage	20.78m <sup>2</sup>
Alfresco	8.16m <sup>2</sup>
Porch	3.39m <sup>2</sup>
Balcony	8.70m <sup>2</sup>
<b>Total</b>	<b>227.01m<sup>2</sup></b>
Total Width	8.510m
Total Depth	17.330m