

DISCLOSURE PLAN

FOR PROPOSED LOT 9

Proposed Lot 9 is currently described as part of Lot 15 on RP899708 situated at Koplick Road, Park Ridge.

LEGEND

- +6.0--- DESIGN FILL CONTOUR (0.5m INTERVAL)
- 10.0--- DESIGN F.S.L. SURFACE LEVEL CONTOUR (0.5m INTERVAL)
- AREA OF FILL
- FOR RETAINING WALL CONSTRUCTION DETAIL SEE ENGINEERING CIVIL O.P.W. PLANS

Builders Note:

Builders shall not build off the design levels shown; a site survey is required. This note is an integral part of this plan.

Engineering Note:

Engineering design information supplied by PeakUrban. August 2019.

Compaction Statement:

All earthworks shall be undertaken in accordance with AS3798:2007 and local authority requirements, including Level 1 supervision.



Local Authority : Logan City	
Height Datum : AHD	
Height Origin: PM153245 RL 42.221	
Contour Interval : 0.5 m	
Horizontal Meridian: MGA (Zone 56)	
ENG : Disclosure Info_20190808	
BDY : 138567 Bdy (2019-08-22)	
Surveyor: RPS GC	
Drawn : BJB	
Scale : 1:150 @ A3	
Date: 22 AUGUST 2019	
Dwg No: 144169-DISC-1/9	

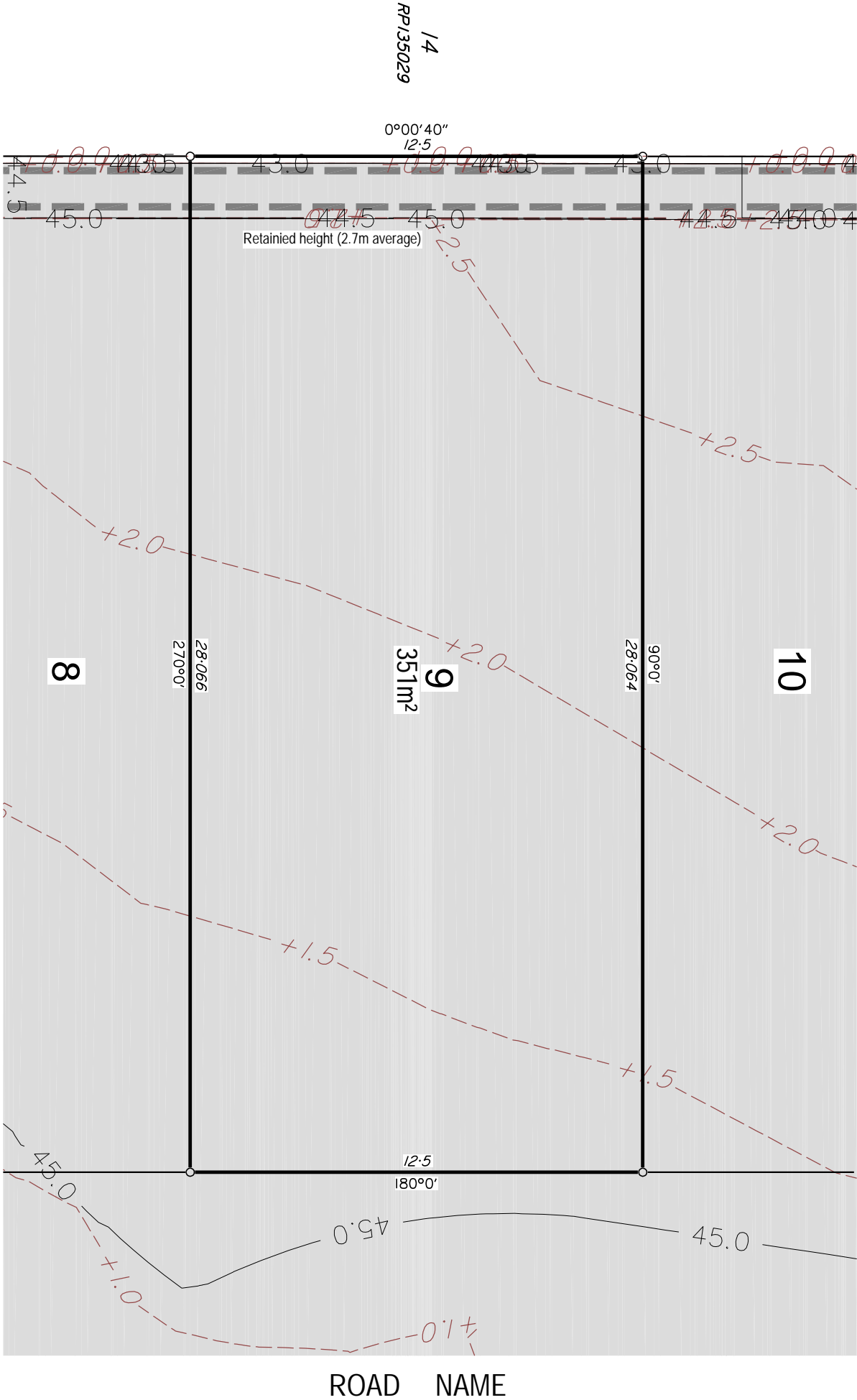
Koplick Developments Pty Ltd



RPS Australia East Pty Ltd
ACN 140 292 762
ABN 44 140 292 762
Lakeside Corporate Space, Suite 425, Level 2
Building 4, 34-36 Glenferrie Drive,
Rothina PO Box 1048 Rothina DC, Qld 4226

T +61 7 555 36900
F +61 7 555 36999
W rpsgroup.com

©COPYRIGHT PROTECTS THIS PLAN
Unauthorized reproduction or amendment
not permitted. Please contact the author.



Note:
This plan has been prepared by RPS Australia East Pty Ltd (ACN 140 292 762), which is registered with the Surveyors Board of Queensland as a Cadastral Surveyor.

DISCLOSURE PLAN

FOR PROPOSED LOT 10

Proposed Lot 10 is currently described as part of Lot 15 on RP899708 situated at Koplick Road, Park Ridge.

LEGEND

- +6.0--- DESIGN FILL CONTOUR (0.5m INTERVAL)
- 10.0--- DESIGN F.S.L. SURFACE LEVEL CONTOUR (0.5m INTERVAL)
- AREA OF FILL
- FOR RETAINING WALL CONSTRUCTION DETAIL
SEE ENGINEERING CIVIL O.P.W. PLANS

Builders Note:

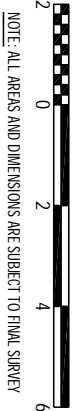
Builders shall not build off the design levels shown; a site survey is required. This note is an integral part of this plan.

Engineering Note:

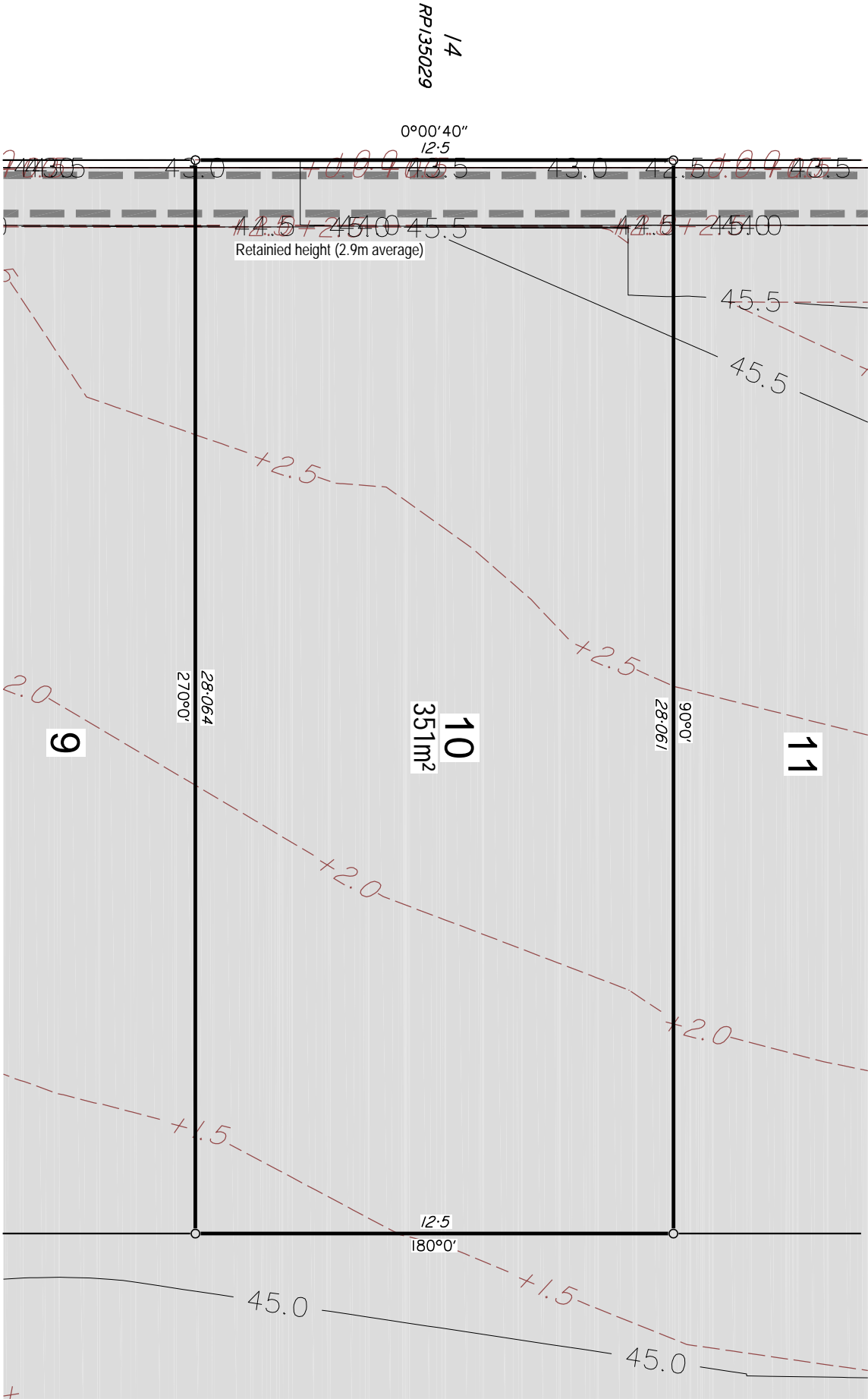
Engineering design information supplied by PeakUrban. August 2019.

Compaction Statement:

All earthworks shall be undertaken in accordance with AS3798:2007 and local authority requirements, including Level 1 supervision.



Koplick Developments Pty Ltd	
Local Authority : Logan City	
Height Datum : AHD	
Height Origin: PM153245 RL 42.221	
Contour Interval : 0.5 m	
Horizontal Meridian: MGA (Zone 56)	
ENG : Disclosure Info_20190808	
BDY : 138567 Bdy (2019-08-22)	
Surveyor: RPS GC	
Drawn : BJB	
Scale : 1:150 @ A3	
Date: 22 AUGUST 2019	
Dwg No: 144169-DISC-1/10	



ROAD NAME

Note:
This plan has been prepared by RPS Australia East Pty Ltd (ACN 140 292 762), which is registered with the Surveyors Board of Queensland as a Cadastral Surveyor.

DISCLOSURE PLAN

FOR PROPOSED LOT 10

Proposed Lot 10 is currently described as part of Lot 15 on RP899708 situated at Koplick Road, Park Ridge.

LEGEND

- +6.0--- DESIGN FILL CONTOUR (0.5m INTERVAL)
- 10.0--- DESIGN F.S.L. SURFACE LEVEL CONTOUR (0.5m INTERVAL)
- AREA OF FILL
- FOR RETAINING WALL CONSTRUCTION DETAIL
SEE ENGINEERING CIVIL O.P.W. PLANS

Builders Note:

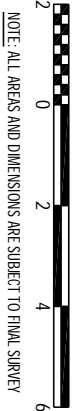
Builders shall not build off the design levels shown; a site survey is required. This note is an integral part of this plan.

Engineering Note:

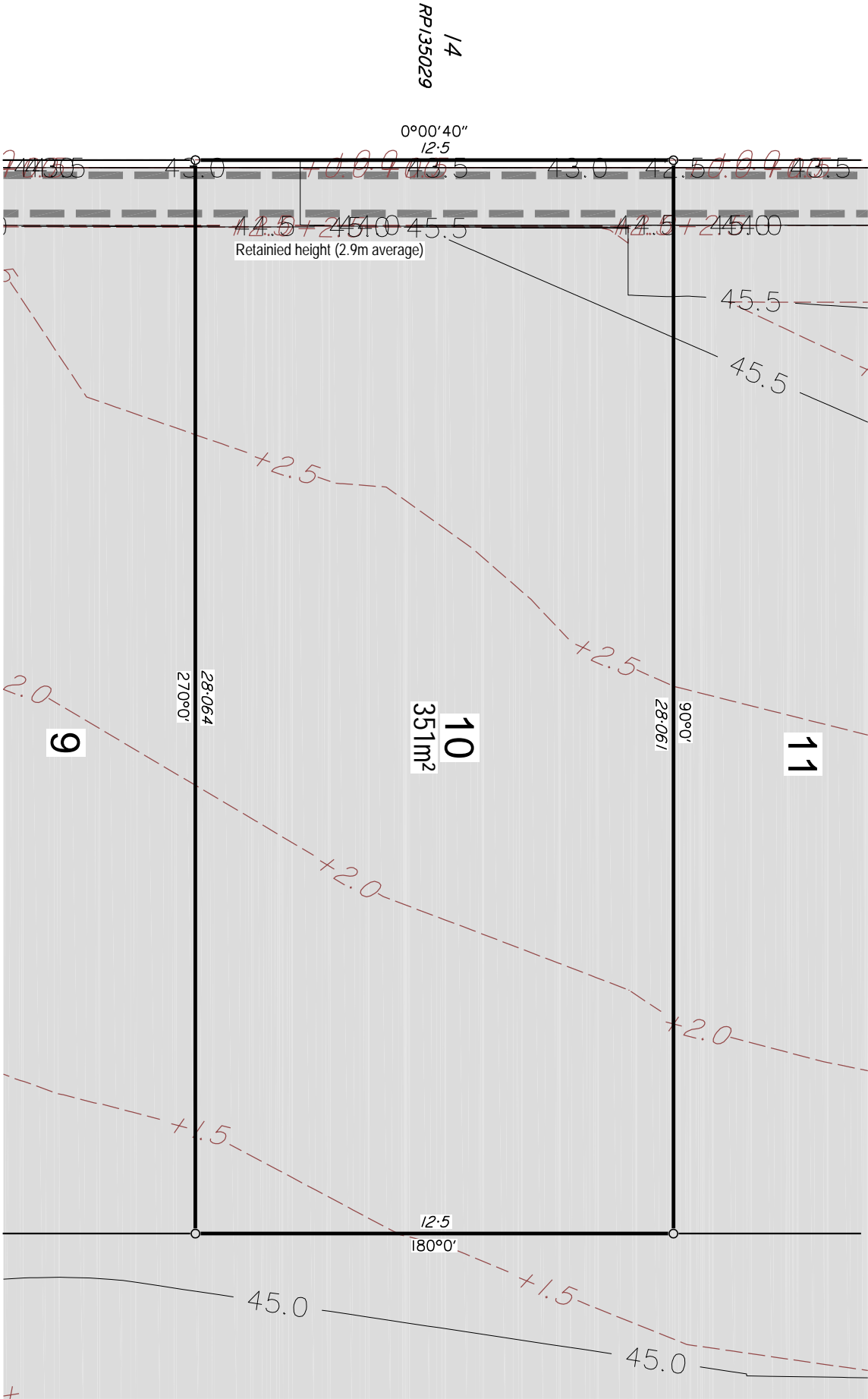
Engineering design information supplied by PeakUrban. August 2019.

Compaction Statement:

All earthworks shall be undertaken in accordance with AS3798:2007 and local authority requirements, including Level 1 supervision.



Koplick Developments Pty Ltd	
Local Authority : Logan City	
Height Datum : AHD	
Height Origin: PM153245 RL 42.221	
Contour Interval : 0.5 m	
Horizontal Meridian: MGA (Zone 56)	
ENG : Disclosure Info_20190808	
BDY : 138567 Bdy (2019-08-22)	
Surveyor: RPS GC	
Drawn : BJB	
Scale : 1:150 @ A3	
Date: 22 AUGUST 2019	
Dwg No: 144169-DISC-1/10	



ROAD NAME

Note:
This plan has been prepared by RPS Australia East Pty Ltd (ACN 140 292 762), which is registered with the Surveyors Board of Queensland as a Cadastral Surveyor.



RPS Australia East Pty Ltd
ACN 140 292 762
ABN 44 140 292 762
Lakeside Corporate Space, Suite 425, Level 2
Building 4, 34-36 Glenferrie Drive,
Rothina PO Box 1048 Rothina DC, Qld 4226
T +61 7 555 36900
F +61 7 555 36999
W rpsgroup.com

©COPYRIGHT PROTECTS THIS PLAN
Unauthorized reproduction or amendment
not permitted. Please contact the author.

DISCLOSURE PLAN

FOR PROPOSED LOT 11

Proposed Lot 11 is currently described as part of Lot 15 on RP899708 situated at Koplick Road, Park Ridge.

LEGEND

- +6.0--- DESIGN FILL CONTOUR (0.5m INTERVAL)
- 10.0--- DESIGN F.S.L. SURFACE LEVEL CONTOUR (0.5m INTERVAL)
- AREA OF FILL
- FOR RETAINING WALL CONSTRUCTION DETAIL
SEE ENGINEERING CIVIL O.P.W. PLANS

Builders Note:

Builders shall not build off the design levels shown; a site survey is required. This note is an integral part of this plan.

Engineering Note:

Engineering design information supplied by PeakUrban. August 2019.

Compaction Statement:

All earthworks shall be undertaken in accordance with AS3798:2007 and local authority requirements, including Level 1 supervision.



Local Authority : Logan City	
Height Datum : AHD	
Height Origin: PM153245 RL 42.221	
Contour Interval : 0.5 m	
Horizontal Meridian: MGA (Zone 56)	
ENG : Disclosure Info_20190808	
BDY : 138567 Bdy (2019-08-22)	
Surveyor: RPS GC	
Drawn : BJB	
Scale : 1:150 @ A3	
Date: 22 AUGUST 2019	
Dwg No: 144169-DISC-1/11	

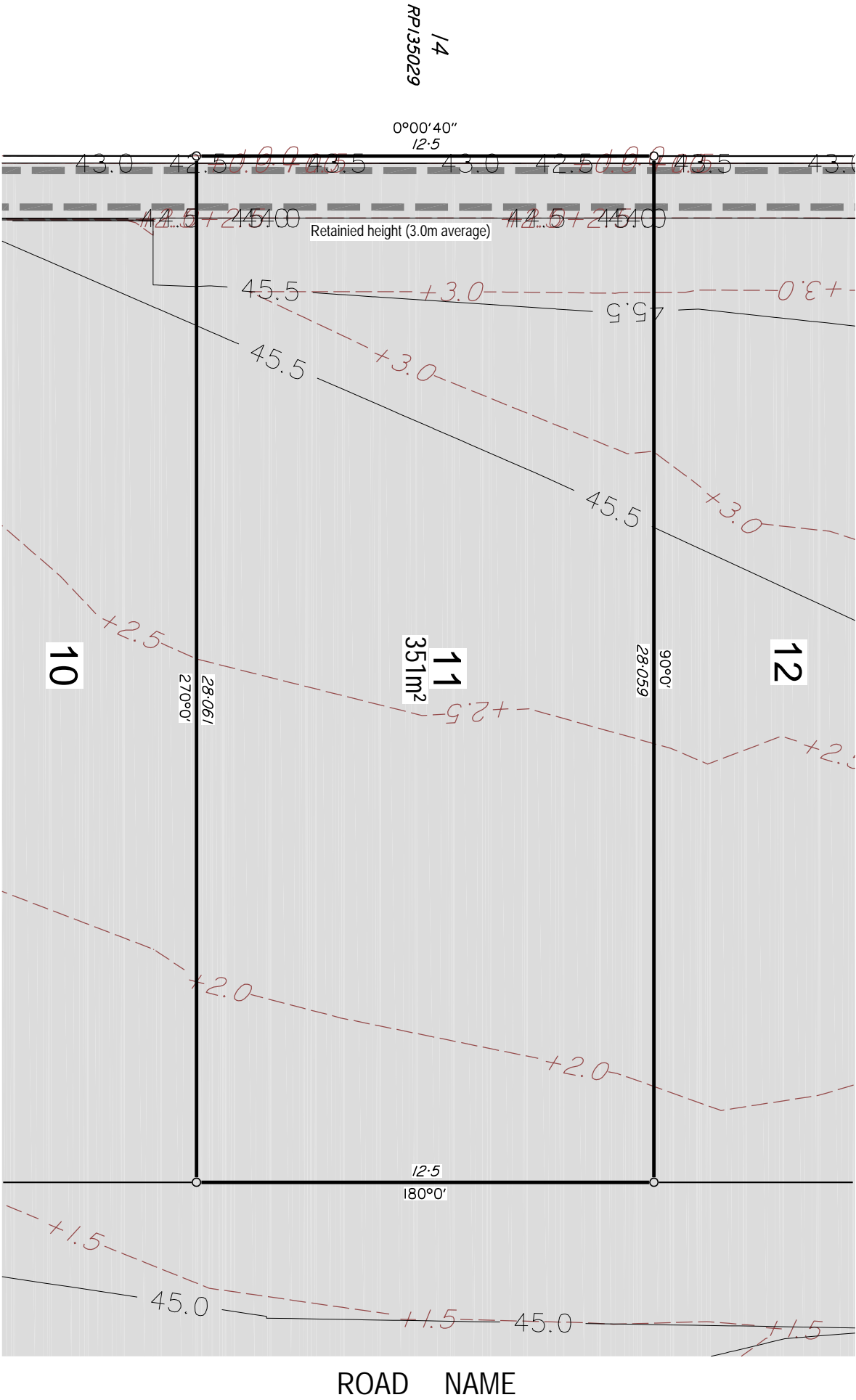
Koplick Developments Pty Ltd



RPS Australia East Pty Ltd
ACN 140 292 762
ABN 44 140 292 762
Lakeside Corporate Space, Suite 425, Level 2
Building 4, 34-36 Glenferrie Drive,
Rothina PO Box 1048 Rothina DC, Qld 4226

T +61 7 555 36900
F +61 7 555 36999
W rpsgroup.com

©COPYRIGHT PROTECTS THIS PLAN
Unauthorised reproduction or amendment
not permitted. Please contact the author.



Note:
This plan has been prepared by RPS Australia East Pty Ltd (ACN 140 292 762), which is registered with the Surveyors Board of Queensland as a Cadastral Surveyor.

DISCLOSURE PLAN

FOR PROPOSED LOT 12

Proposed Lot 12 is currently described as part of Lot 15 on RP899708 situated at Koplick Road, Park Ridge.

LEGEND

- +6.0--- DESIGN FILL CONTOUR (0.5m INTERVAL)
- 10.0--- DESIGN F.S.L. SURFACE LEVEL CONTOUR (0.5m INTERVAL)
- AREA OF FILL
- FOR RETAINING WALL CONSTRUCTION DETAIL SEE ENGINEERING CIVIL O.P.W. PLANS

Builders Note:

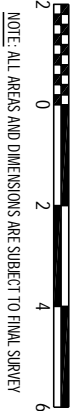
Builders shall not build off the design levels shown; a site survey is required. This note is an integral part of this plan.

Engineering Note:

Engineering design information supplied by PeakUrban. August 2019.

Compaction Statement:

All earthworks shall be undertaken in accordance with AS3798:2007 and local authority requirements, including Level 1 supervision.



Local Authority : Logan City	
Height Datum : AHD	
Height Origin: PM153245 RL 42.221	
Contour Interval : 0.5 m	
Horizontal Meridian: MGA (Zone 56)	
ENG : Disclosure Info_20190808	
BDY : 138567 Bdy (2019-08-22)	
Surveyor: RPS GC	
Drawn : BJB	
Scale : 1:150 @ A3	
Date: 22 AUGUST 2019	
Dwg No: 144169-DISC-1/12	

Koplick Developments Pty Ltd

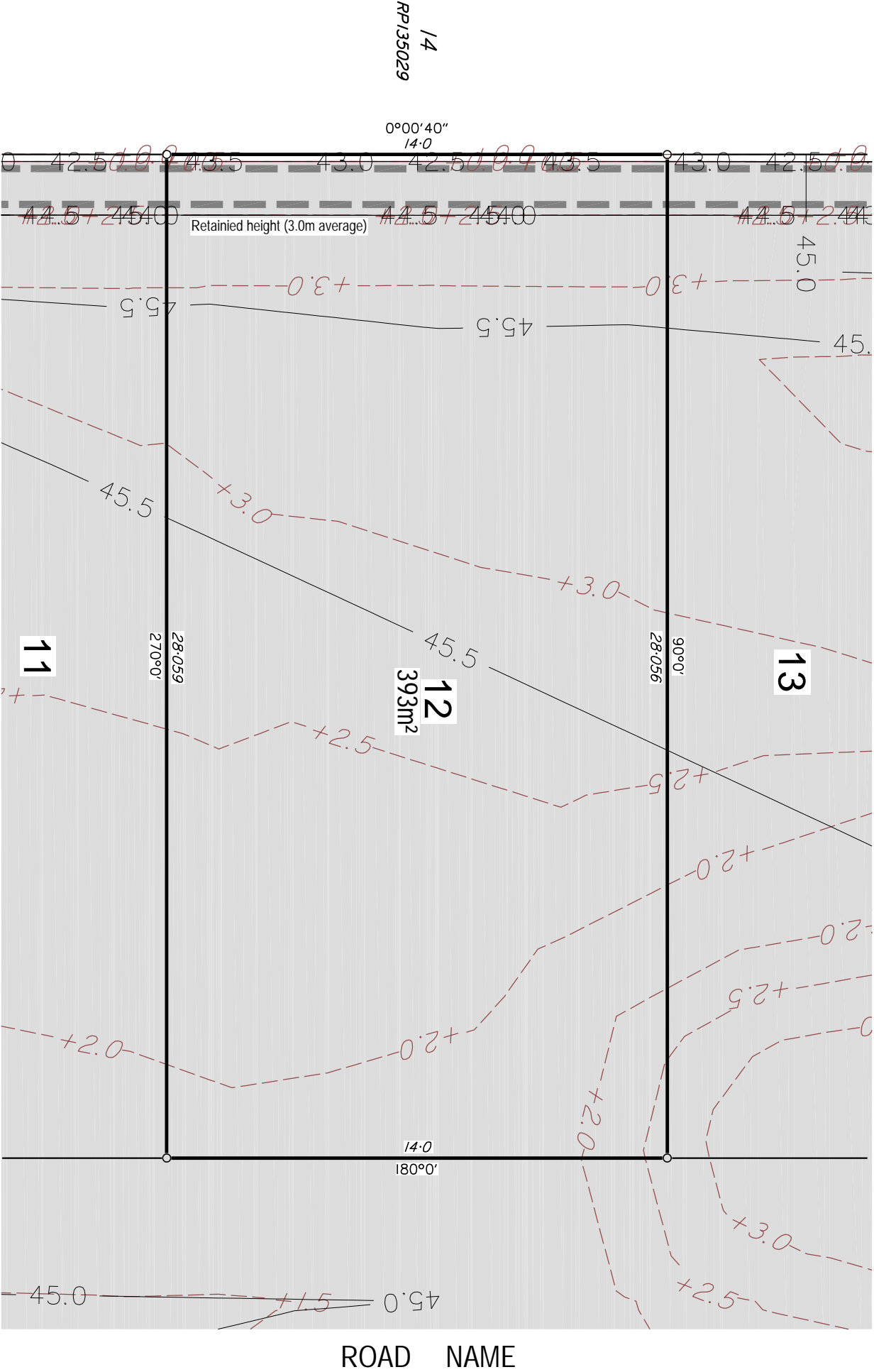


RPS Australia East Pty Ltd
ACN 140 292 762
ABN 44 140 292 762

Lakeside Corporate Space, Suite 425, Level 2
Building 4, 34-36 Glenferrie Drive,
Rothina PO Box 1048 Rothina DC, Qld 4226

T +61 7 555 36900
F +61 7 555 36999
W rpsgroup.com

©COPYRIGHT PROTECTS THIS PLAN
Unauthorised reproduction or amendment
not permitted. Please contact the author.



Note:

This plan has been prepared by RPS Australia East Pty Ltd (ACN 140 292 762), which is registered with the Surveyors Board of Queensland as a Cadastral Surveyor.

DISCLOSURE PLAN

FOR PROPOSED LOT 13

Proposed Lot 13 is currently described as part of Lot 15 on RP899708 situated at Koplick Road, Park Ridge.

LEGEND

- +6.0--- DESIGN FILL CONTOUR (0.5m INTERVAL)
- 10.0--- DESIGN F.S.L. SURFACE LEVEL CONTOUR (0.5m INTERVAL)
- AREA OF FILL
- FOR RETAINING WALL CONSTRUCTION DETAIL SEE ENGINEERING CIVIL O.P.W. PLANS

Builders Note:

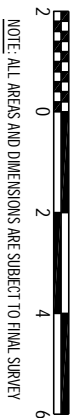
Builders shall not build off the design levels shown; a site survey is required. This note is an integral part of this plan.

Engineering Note:

Engineering design information supplied by PeakUrban. August 2019.

Compaction Statement:

All earthworks shall be undertaken in accordance with AS3798:2007 and local authority requirements, including Level 1 supervision.



Local Authority : Logan City
Height Datum : AHD
Height Origin: PM153245 RL 42.221
Contour Interval : 0.5 m
Horizontal Meridian: MGA (Zone 56)
ENG : Disclosure Info_20190808
BDY : 138567 Bdy (2019-08-22)
Surveyor: RPS GC
Drawn : BJB
Scale : 1:150 @ A3
Date: 22 AUGUST 2019
Dwg No: 144169-DISC-1/13

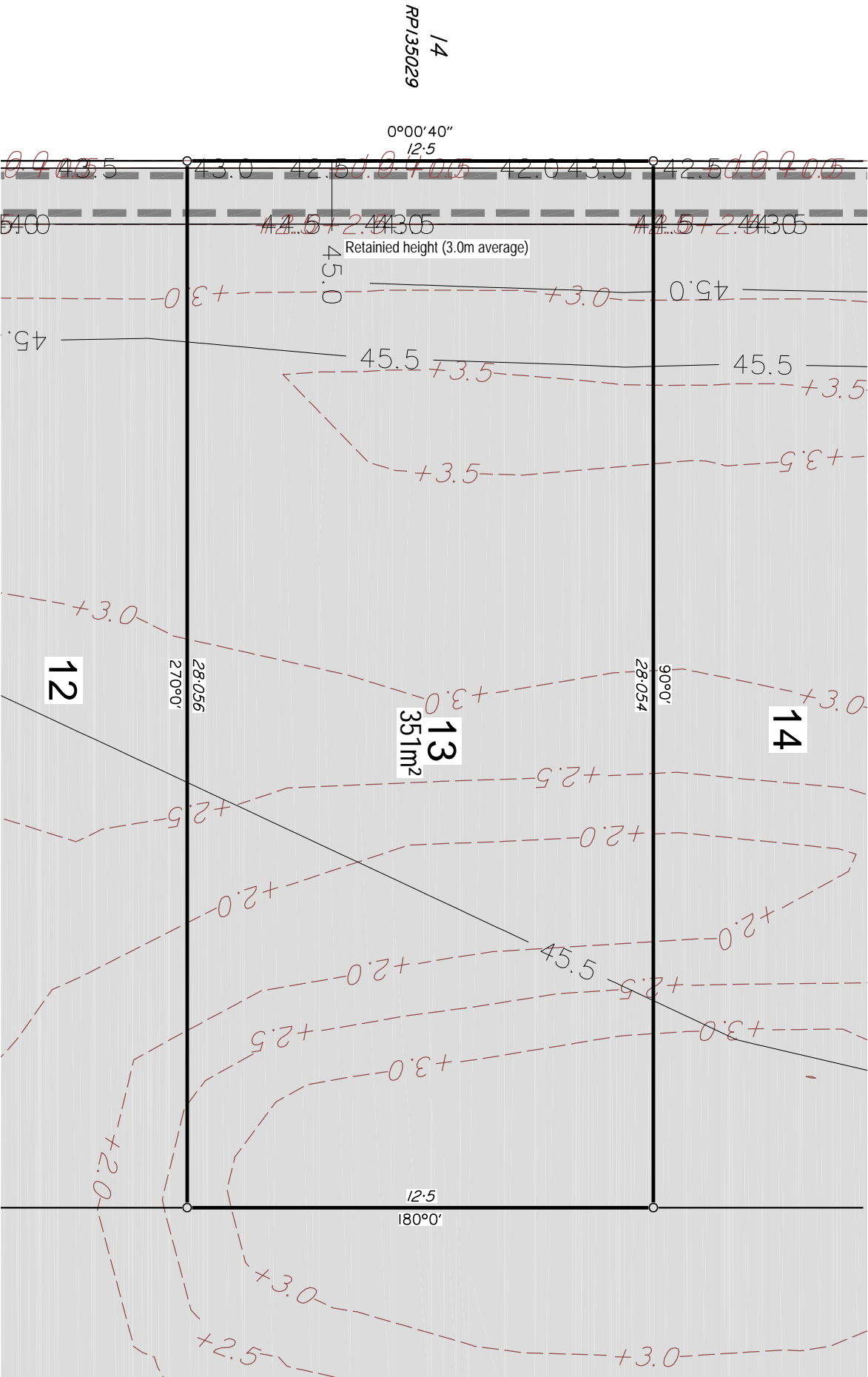
Koplick Developments Pty Ltd



RPS Australia East Pty Ltd
ACN 140 292 762
ABN 44 140 292 762
Lakeside Corporate Space, Suite 425, Level 2
Building 4, 34-36 Glenferrie Drive,
Rothina PO Box 1048 Rothina DC, Qld 4226

T +61 7 555 36900
F +61 7 555 36999
W rpsgroup.com

©COPYRIGHT PROTECTS THIS PLAN
Unauthorised reproduction or amendment
not permitted. Please contact the author.

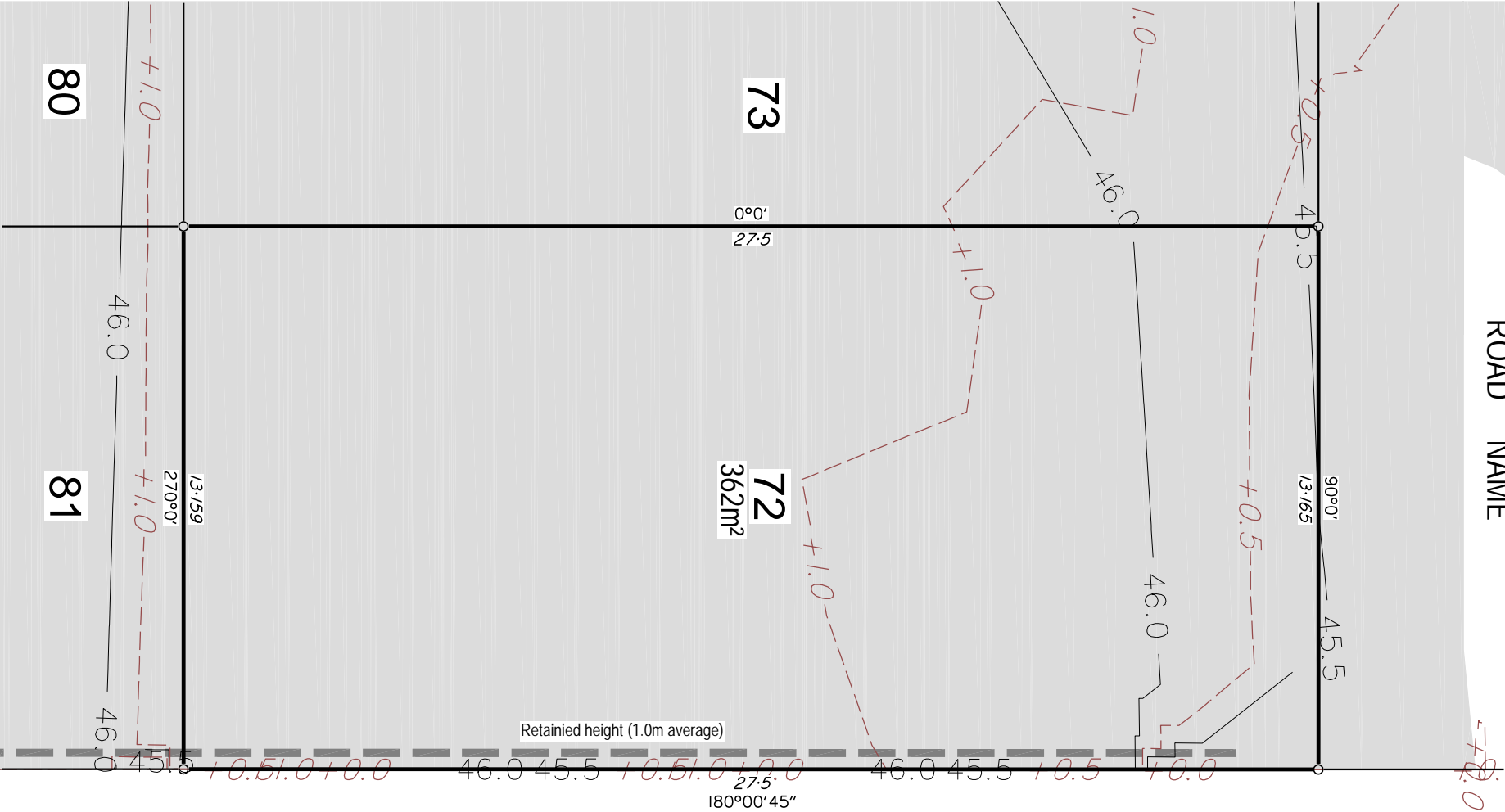


ROAD NAME

1/4
RP135029

Note:
This plan has been prepared by RPS Australia East Pty Ltd (ACN 140 292 762), which is registered with the Surveyors Board of Queensland as a Cadastral Surveyor.

ROAD NAME



DISCLOSURE PLAN

FOR PROPOSED LOT 72

Proposed Lot 72 is currently described as part of Lot 15 on RP899708 situated at Koplick Road, Park Ridge.

LEGEND

- +6.0--- DESIGN FILL CONTOUR (0.5m INTERVAL)
- 10.0--- DESIGN F.S.L. SURFACE LEVEL CONTOUR (0.5m INTERVAL)
- AREA OF FILL
- FOR RETAINING WALL CONSTRUCTION DETAIL SEE ENGINEERING CIVIL O.P.W. PLANS

Builders Note:

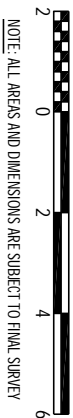
Builders shall not build off the design levels shown; a site survey is required. This note is an integral part of this plan.

Engineering Note:

Engineering design information supplied by PeakUrban. August 2019.

Compaction Statement:

All earthworks shall be undertaken in accordance with AS3798:2007 and local authority requirements, including Level 1 supervision.



Koplick Developments Pty Ltd

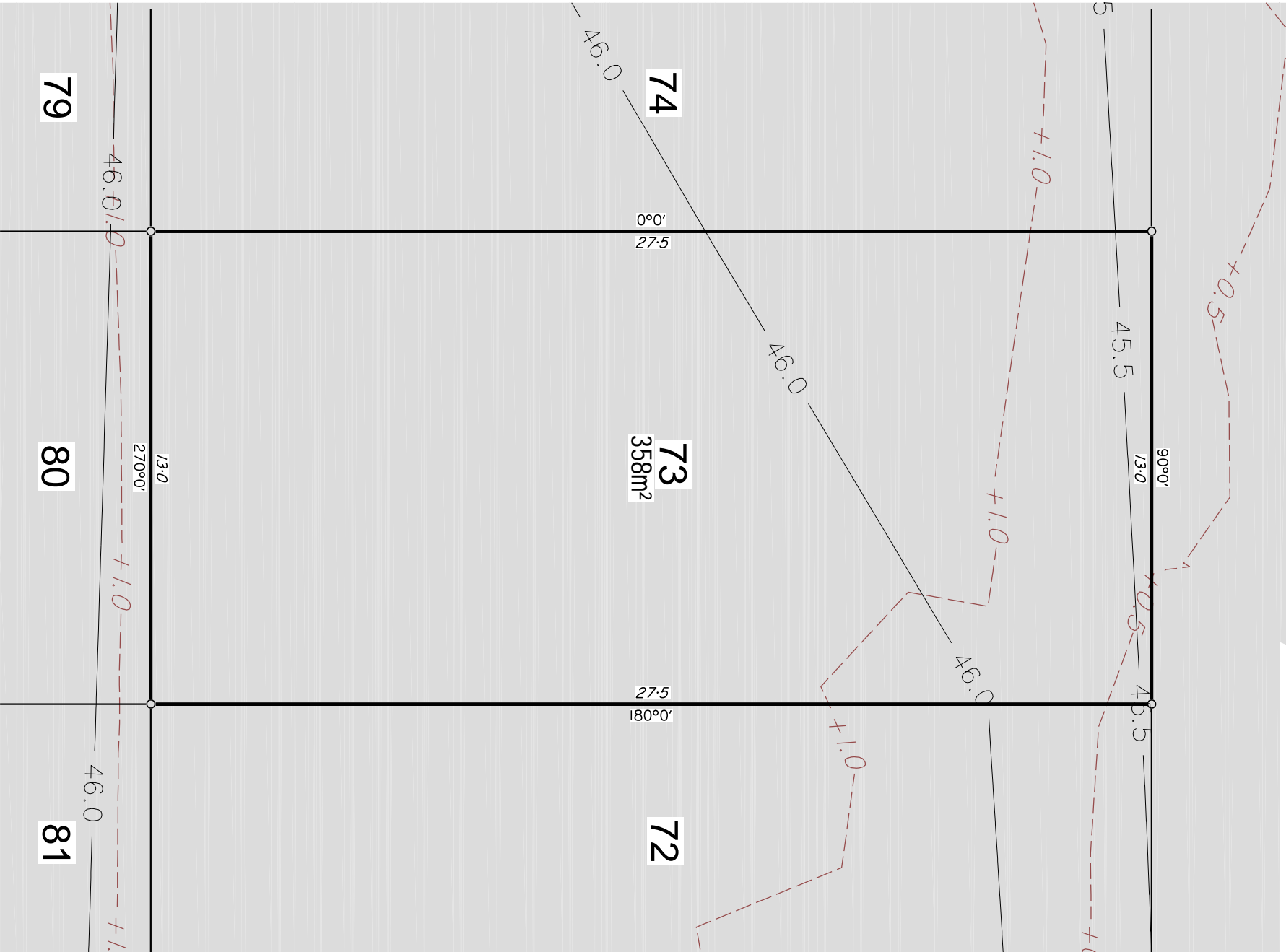
Local Authority : Logan City
Height Datum : AHD
Height Origin: PM153245 RL 42.221
Contour Interval : 0.5 m
Horizontal Meridian: MGA (Zone 56)
ENG : Disclosure Info_20190808
BDY : 138567 Bdy (2019-08-22)
Surveyor: RPS GC
Drawn : BJB
Scale : 1:150 @ A3
Date: 22 AUGUST 2019
Dwg No: 144169-DISC-1/72



RPS Australia East Pty Ltd
ACN 140 292 762
ABN 44 140 292 762
Lakeside Corporate Space, Suite 425, Level 2
Building 4, 34-36 Glenferrie Drive,
Rothina PO Box 1048 Rothina DC, Qld 4226
T +61 7 555 36900
F +61 7 555 36999
W rpsgroup.com

©COPYRIGHT PROTECTS THIS PLAN
Unauthorised reproduction or amendment
not permitted. Please contact the author.

ROAD NAME



DISCLOSURE PLAN

FOR PROPOSED LOT 73

Proposed Lot 73 is currently described as part of Lot 15 on RP899708 situated at Koplick Road, Park Ridge.

LEGEND

- +6.0--- DESIGN FILL CONTOUR (0.5m INTERVAL)
- 10.0--- DESIGN F.S.L. SURFACE LEVEL CONTOUR (0.5m INTERVAL)
- AREA OF FILL
- FOR RETAINING WALL CONSTRUCTION DETAIL
- SEE ENGINEERING CIVIL O.P.W. PLANS

Builders Note:

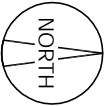
Builders shall not build off the design levels shown; a site survey is required. This note is an integral part of this plan.

Engineering Note:

Engineering design information supplied by PeakUrban. August 2019.

Compaction Statement:

All earthworks shall be undertaken in accordance with AS3798:2007 and local authority requirements, including Level 1 supervision.



Local Authority : Logan City	
Height Datum : AHD	
Height Origin: PM153245 RL 42.221	
Contour Interval : 0.5 m	
Horizontal Meridian: MGA (Zone 56)	
ENG : Disclosure Info_20190808	
BDY : 138567 Bdy (2019-08-22)	
Surveyor: RPS GC	
Drawn : BJB	
Scale : 1:150 @ A3	
Date: 22 AUGUST 2019	
Dwg No: 144169-DISC-1/73	

Koplick Developments Pty Ltd



RPS Australia East Pty Ltd
ACN 140 292 762
ABN 44 140 292 762

Lakeside Corporate Space, Suite 425, Level 2
Building 4, 34-36 Glenferrie Drive,
Rdolina PO Box 1048 Rdolina DC, Qld 4226

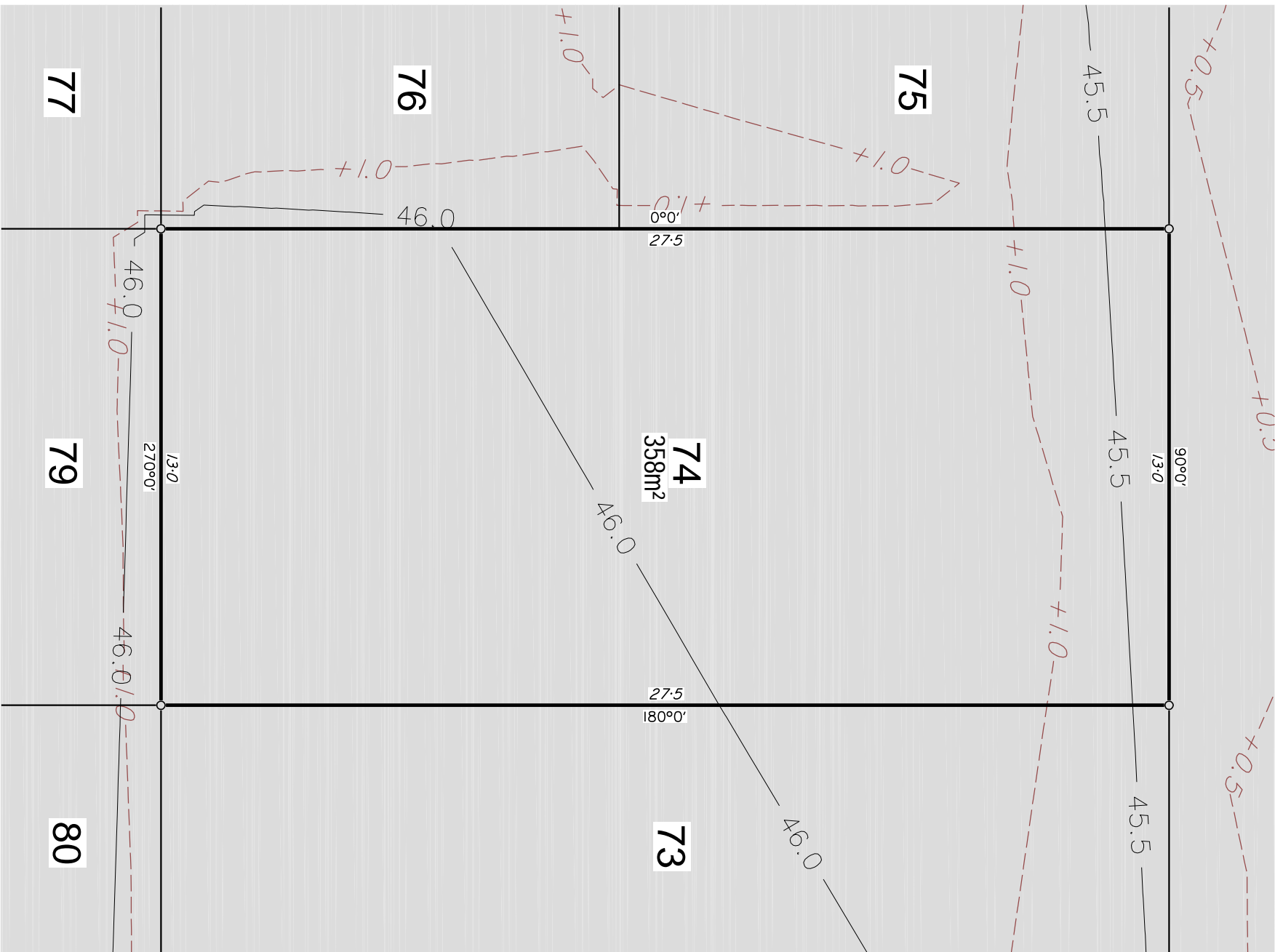
©COPYRIGHT PROTECTS THIS PLAN
Unauthorized reproduction or amendment
not permitted. Please contact the author.

T +61 7 555 36900
F +61 7 555 36999
W rpsgroup.com

Note:

This plan has been prepared by RPS Australia East Pty Ltd (ACN 140 292 762), which is registered with the Surveyors Board of Queensland as a Cadastral Surveyor.

ROAD NAME



DISCLOSURE PLAN

FOR PROPOSED LOT 74

Proposed Lot 74 is currently described as part of Lot 15 on RP899708 situated at Koplick Road, Park Ridge.

LEGEND

- +6.0--- DESIGN FILL CONTOUR (0.5m INTERVAL)
- 10.0--- DESIGN F.S.L. SURFACE LEVEL CONTOUR (0.5m INTERVAL)
- AREA OF FILL
- FOR RETAINING WALL CONSTRUCTION DETAIL
- SEE ENGINEERING CIVIL O.P.W. PLANS

Builders Note:

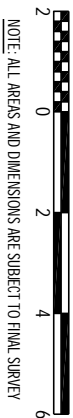
Builders shall not build off the design levels shown; a site survey is required. This note is an integral part of this plan.

Engineering Note:

Engineering design information supplied by PeakUrban. August 2019.

Compaction Statement:

All earthworks shall be undertaken in accordance with AS3798:2007 and local authority requirements, including Level 1 supervision.



Koplick Developments Pty Ltd

Local Authority : Logan City
Height Datum : AHD
Height Origin: PM153245 RL 42.221
Contour Interval : 0.5 m
Horizontal Meridian: MGA (Zone 56)
ENG : Disclosure Info_20190808
BDY : 138567 Bdy (2019-08-22)
Surveyor: RPS GC
Drawn : BJB
Scale : 1:150 @ A3
Date: 22 AUGUST 2019
Dwg No: 144169-DISC-1/74



RPS Australia East Pty Ltd
ACN 140 292 762
ABN 44 140 292 762

Lakeside Corporate Space, Suite 425, Level 2
Building 4, 34-36 Glenferrie Drive,
Roslina PO Box 1048 Roslinda DC, Qld 4226

©COPYRIGHT PROTECTS THIS PLAN
Unauthorized reproduction or amendment
not permitted. Please contact the author.

T +61 7 555 36900
F +61 7 555 36999
W rpsgroup.com






Note:

This plan has been prepared by RPS Australia East Pty Ltd (ACN 140 292 762), which is registered with the Surveyors Board of Queensland as a Cadastral Surveyor.

FOR PROPOSED LOT 75

Proposed Lot 75 is currently described as part of Lot 15 on RP899708 situated at Koplick Road, Park Ridge.

LEGEND

-  DESIGN FILL CONTOUR (0.5m INTERVAL)
 DESIGN F.S.L. SURFACE LEVEL CONTOUR (0.5m INTERVAL)
 AREA OF FILL
 FOR RETAINING WALL CONSTRUCTION DETAIL
 SEE ENGINEERING CIVIL O.P.W. PLANS

Builders Note:

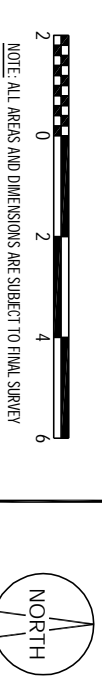
Builders shall not build off the design levels shown; a site survey is required. This note is an integral part of this plan.

Engineering Note:

Engineering design information supplied by PeakUrban. August 2019.

Compaction Statement:

All earthworks shall be undertaken in accordance with AS3798:2007 and local authority requirements, including Level 1 supervision.

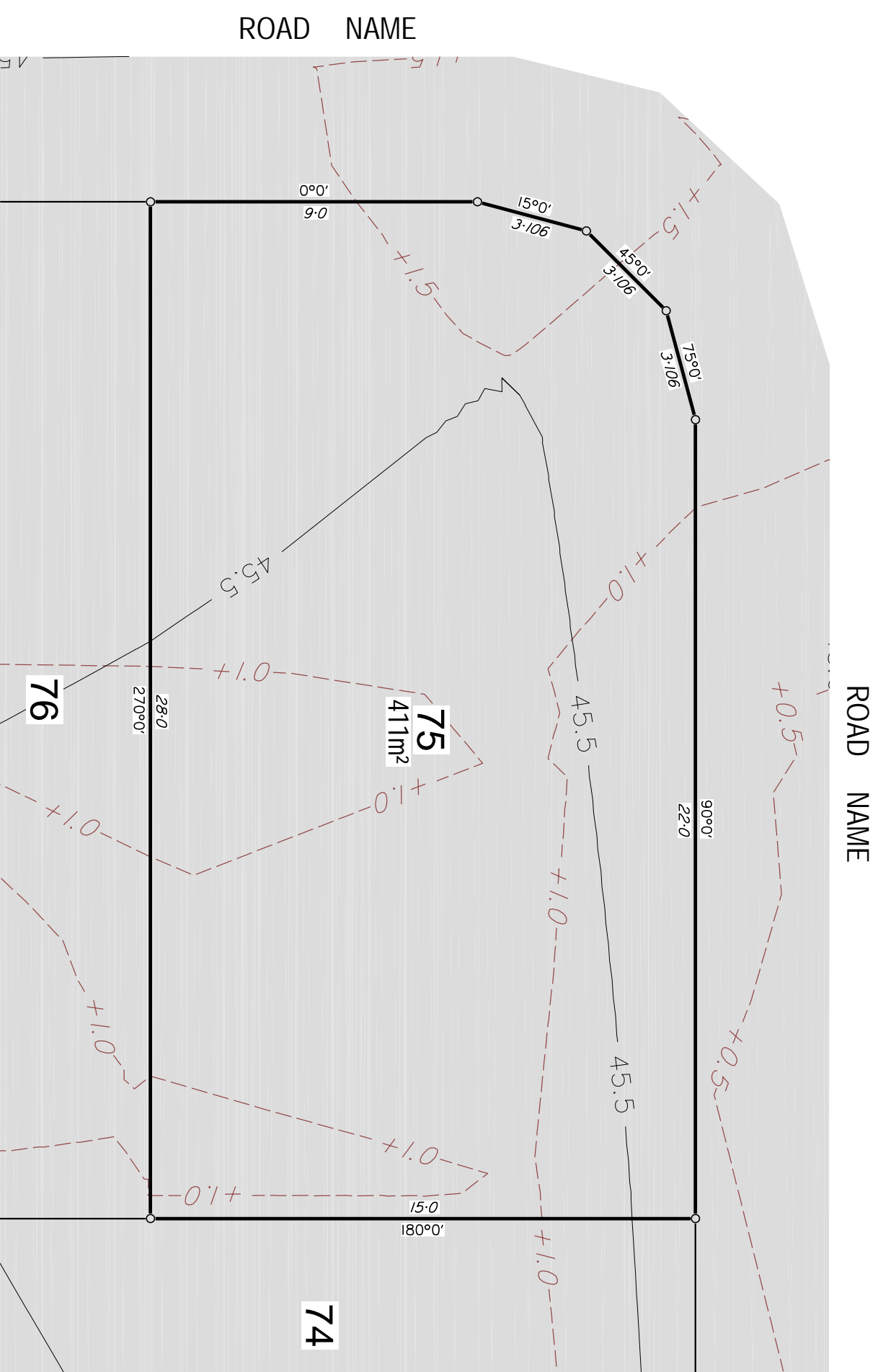


Koplick Developments Pty Ltd
Local Authority: Logan City
Height Datum : AHD
Height Origin: PM153245 RL 42.221
Contour Interval : 0.5 m
Horizontal Meridian: MGA (Zone 56)
ENG : Disclosure Info -20190808
BDY : 138567 Bdy (2019-08-22)
Surveyor: RPS GC
Drawn : BJB
Scale : 1:150 @ A3
Date: 22 AUGUST 2019
Dwg No: 144169-DISC-1/75



©COPYRIGHT PROTECTS THIS PLAN
Unauthorised reproduction or amendment
not permitted. Please contact the author.

T +61 7 555 36900
F +61 7 555 36999
W rpsgroup.com



Note:

This plan has been prepared by RPS Australia East Pty Ltd (ACN 140 292 762), which is registered with the Surveyors Board of Queensland as a Cadastral Surveyor.

DISCLOSURE PLAN

FOR PROPOSED LOT 76

Proposed Lot 76 is currently described as part of Lot 15 on RP899708 situated at Koplick Road, Park Ridge.

LEGEND

- +6.0--- DESIGN FILL CONTOUR (0.5m INTERVAL)
- 10.0--- DESIGN F.S.L. SURFACE LEVEL CONTOUR (0.5m INTERVAL)
- AREA OF FILL
- FOR RETAINING WALL CONSTRUCTION DETAIL SEE ENGINEERING CIVIL O.P.W. PLANS

Builders Note:

Builders shall not build off the design levels shown; a site survey is required. This note is an integral part of this plan.

Engineering Note:

Engineering design information supplied by PeakUrban. August 2019.

Compaction Statement:

All earthworks shall be undertaken in accordance with AS3798:2007 and local authority requirements, including Level 1 supervision.



Local Authority : Logan City	
Height Datum : AHD	
Height Origin: PM153245 RL 42.221	
Contour Interval : 0.5 m	
Horizontal Meridian: MGA (Zone 56)	
ENG : Disclosure Info_20190808	
BDY : 138567 Bdy (2019-08-22)	
Surveyor: RPS GC	
Drawn : BJB	
Scale : 1:150 @ A3	
Date: 22 AUGUST 2019	
Dwg No: 144169-DISC-1/76	

Koplick Developments Pty Ltd



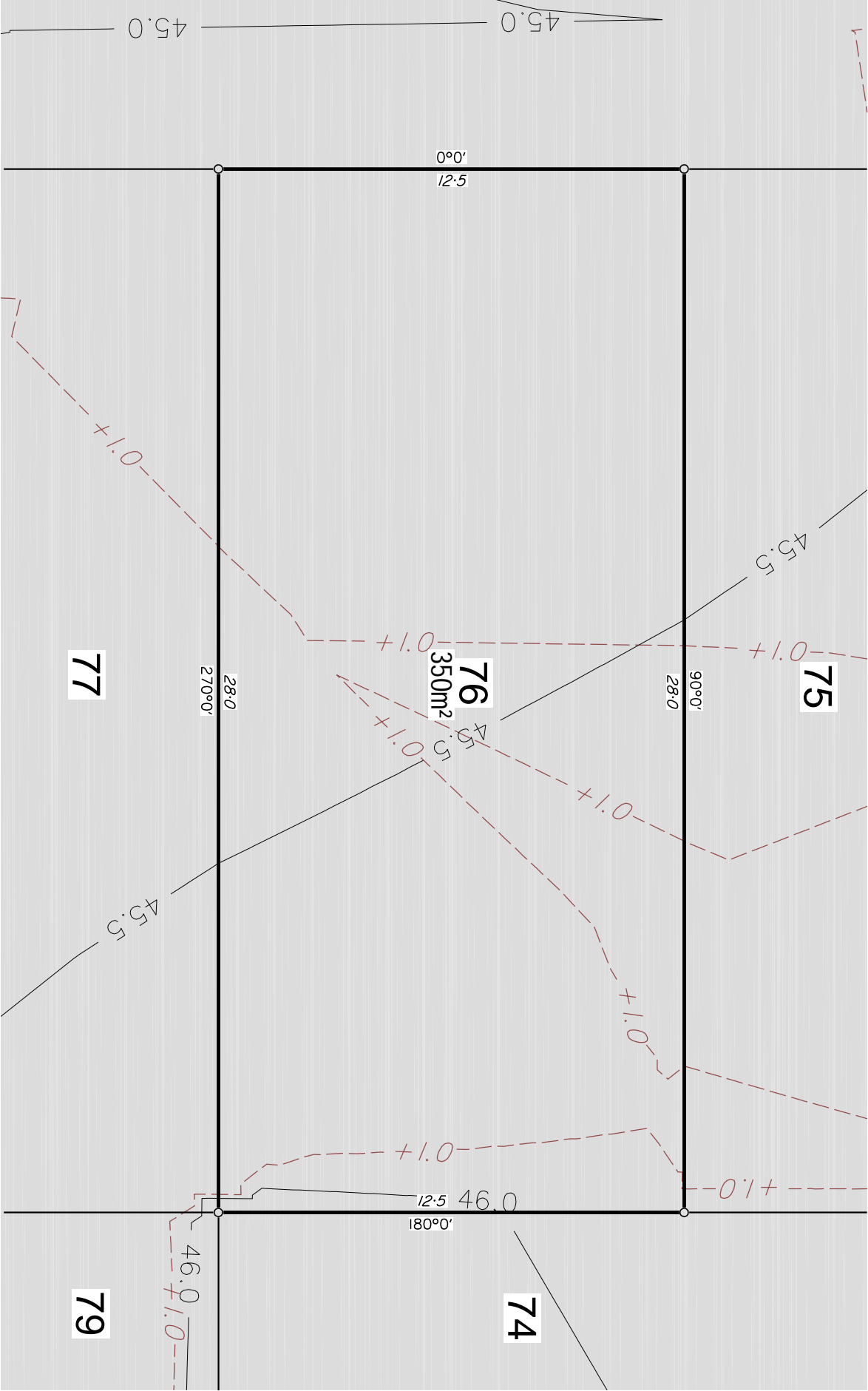
RPS Australia East Pty Ltd
ACN 140 292 762
ABN 44 140 292 762

Lakeside Corporate Space, Suite 425, Level 2
Building 4, 34-36 Glenferrie Drive,
Roslina PO Box 1048 Roslinda DC, Qld 4226

T +61 7 555 36900
F +61 7 555 36999
W rpsgroup.com

©COPYRIGHT PROTECTS THIS PLAN
Unauthorized reproduction or amendment
not permitted. Please contact the author.

ROAD NAME



Note:

This plan has been prepared by RPS Australia East Pty Ltd (ACN 140 292 762), which is registered with the Surveyors Board of Queensland as a Cadastral Surveyor.

DISCLOSURE PLAN

FOR PROPOSED LOT 77

Proposed Lot 77 is currently described as part of Lot 15 on RP899708 situated at Koplick Road, Park Ridge.

LEGEND

- +6.0--- DESIGN FILL CONTOUR (0.5m INTERVAL)
- 10.0--- DESIGN F.S.L. SURFACE LEVEL CONTOUR (0.5m INTERVAL)
- AREA OF FILL
- FOR RETAINING WALL CONSTRUCTION DETAIL
SEE ENGINEERING CIVIL O.P.W. PLANS

Builders Note:

Builders shall not build off the design levels shown; a site survey is required. This note is an integral part of this plan.

Engineering Note:

Engineering design information supplied by PeakUrban. August 2019.

Compaction Statement:

All earthworks shall be undertaken in accordance with AS3798:2007 and local authority requirements, including Level 1 supervision.



Local Authority : Logan City	
Height Datum : AHD	
Height Origin: PM153245 RL 42.221	
Contour Interval : 0.5 m	
Horizontal Meridian: MGA (Zone 56)	
ENG : Disclosure Info_20190808	
BDY : 138567 Bdy (2019-08-22)	
Surveyor: RPS GC	
Drawn : BJB	
Scale : 1:150 @ A3	
Date: 22 AUGUST 2019	
Dwg No: 144169-DISC-1/77	

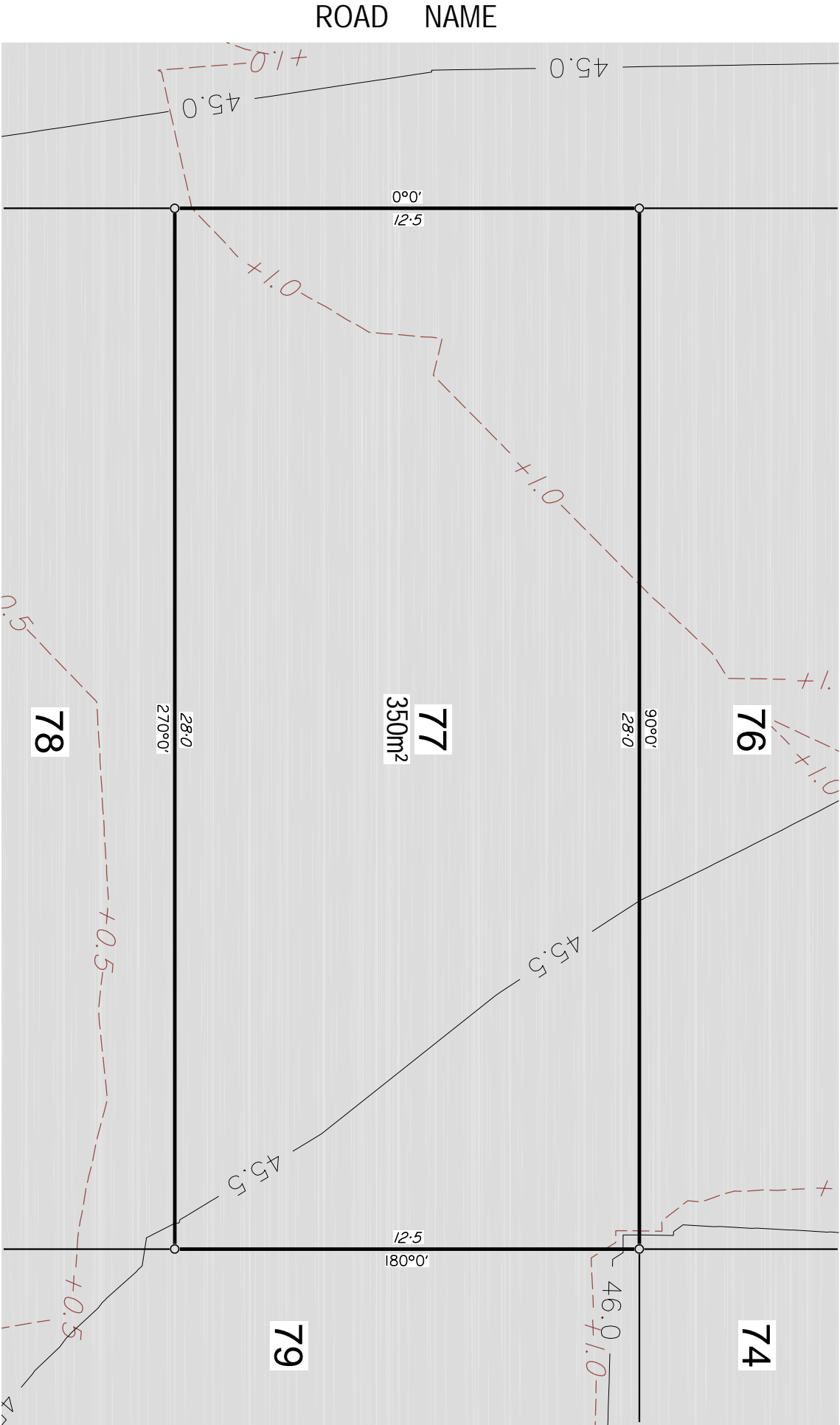
Koplick Developments Pty Ltd



RPS Australia East Pty Ltd
ACN 140 292 762
ABN 44 140 292 762
Lakeside Corporate Space, Suite 425, Level 2
Building 4, 34-36 Glenferrie Drive,
Roslina PO Box 1048 Roslinda DC, Qld 4226

T +61 7 555 36900
F +61 7 555 36999
W rpsgroup.com

©COPYRIGHT PROTECTS THIS PLAN
Unauthorized reproduction or amendment
not permitted. Please contact the author.



Note:

This plan has been prepared by RPS Australia East Pty Ltd (ACN 140 292 762), which is registered with the Surveyors Board of Queensland as a Cadastral Surveyor.

DISCLOSURE PLAN

FOR PROPOSED LOT 78

Proposed Lot 78 is currently described as part of Lot 15 on RP899708 situated at Koplick Road, Park Ridge.

LEGEND

- +6.0--- DESIGN FILL CONTOUR (0.5m INTERVAL)
- 10.0--- DESIGN F.S.L. SURFACE LEVEL CONTOUR (0.5m INTERVAL)
- AREA OF FILL
- FOR RETAINING WALL CONSTRUCTION DETAIL SEE ENGINEERING CIVIL O.P.W. PLANS

Builders Note:

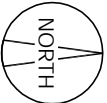
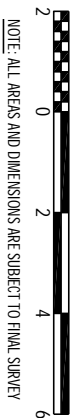
Builders shall not build off the design levels shown; a site survey is required. This note is an integral part of this plan.

Engineering Note:

Engineering design information supplied by PeakUrban. August 2019.

Compaction Statement:

All earthworks shall be undertaken in accordance with AS3798:2007 and local authority requirements, including Level 1 supervision.



Local Authority : Logan City	
Height Datum : AHD	
Height Origin: PM153245 RL 42.221	
Contour Interval : 0.5 m	
Horizontal Meridian: MGA (Zone 56)	
ENG : Disclosure Info_20190808	
BDY : 138567 Bdy (2019-08-22)	
Surveyor: RPS GC	
Drawn : BJB	
Scale : 1:150 @ A3	
Date: 22 AUGUST 2019	
Dwg No: 144169-DISC-1/78	

Koplick Developments Pty Ltd

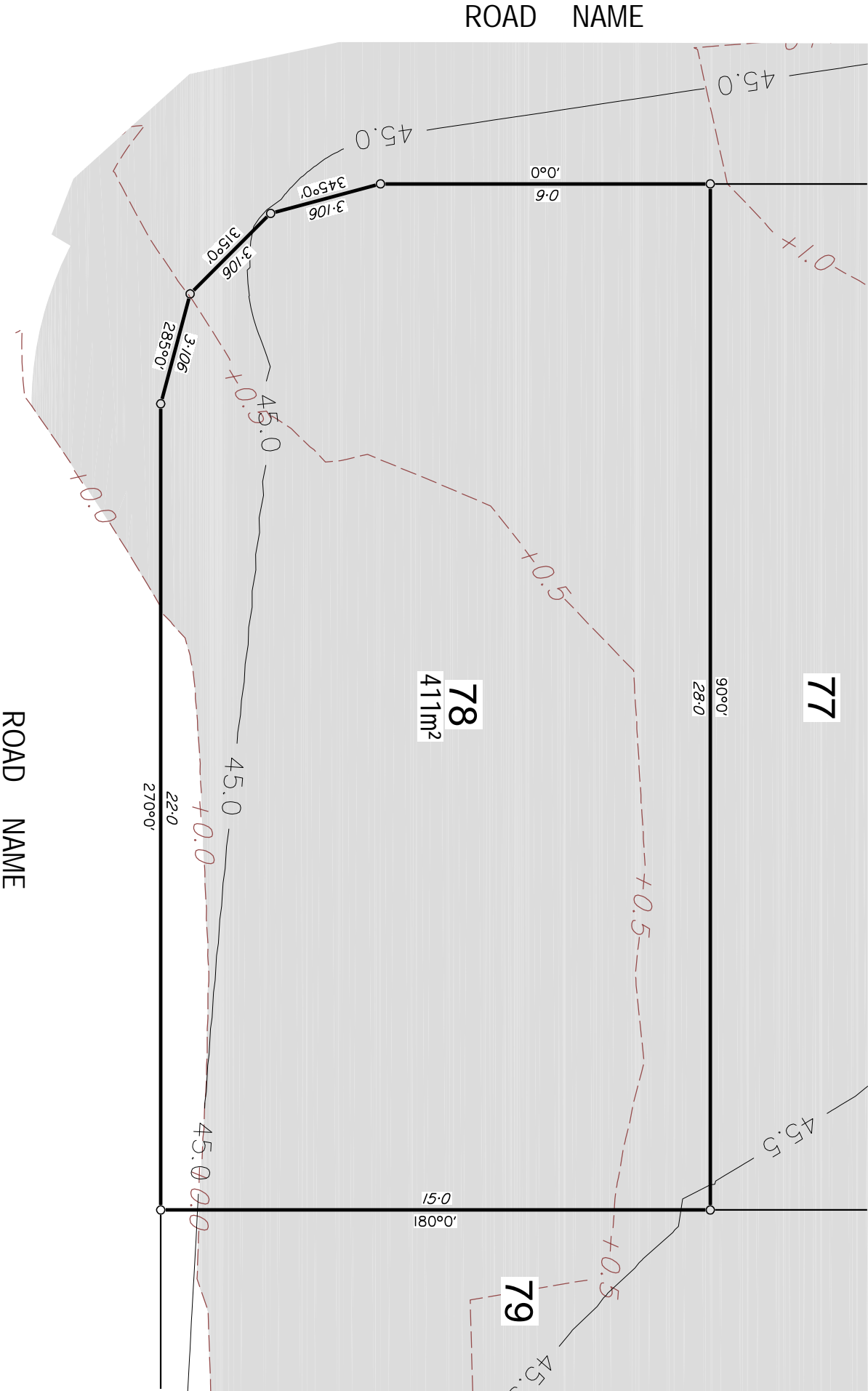


RPS Australia East Pty Ltd
ACN 140 292 762
ABN 44 140 292 762

Lakeside Corporate Space, Suite 425, Level 2
Building 4, 34-36 Glenferrie Drive,
Roslina PO Box 1048 Roslinda DC, Qld 4226

T +61 7 555 36900
F +61 7 555 36999
W rpsgroup.com

©COPYRIGHT PROTECTS THIS PLAN
Unauthorized reproduction or amendment
not permitted. Please contact the author.



Note:
This plan has been prepared by RPS Australia East Pty Ltd (ACN 140 292 762), which is registered with the Surveyors Board of Queensland as a Cadastral Surveyor.

DISCLOSURE PLAN

FOR PROPOSED LOT 79

Proposed Lot 79 is currently described as part of Lot 15 on RP899708 situated at Koplick Road, Park Ridge.

LEGEND

- +6.0--- DESIGN FILL CONTOUR (0.5m INTERVAL)
- 10.0--- DESIGN F.S.L. SURFACE LEVEL CONTOUR (0.5m INTERVAL)
- AREA OF FILL
- FOR RETAINING WALL CONSTRUCTION DETAIL
- SEE ENGINEERING CIVIL O.P.W. PLANS

Builders Note:

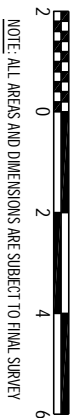
Builders shall not build off the design levels shown: a site survey is required. This note is an integral part of this plan.

Engineering Note:

Engineering design information supplied by PeakUrban. August 2019.

Compaction Statement:

All earthworks shall be undertaken in accordance with AS3798:2007 and local authority requirements, including Level 1 supervision.



NOTE: ALL AREAS AND DIMENSIONS ARE SUBJECT TO FINAL SURVEY

Local Authority : Logan City	
Height Datum : AHD	
Height Origin: PM153245 RL 42.221	
Contour Interval : 0.5 m	
Horizontal Meridian: MGA (Zone 56)	
ENG : Disclosure Info_20190808	
BDY : 138567 Bdy (2019-08-22)	
Surveyor: RPS GC	
Drawn : BJB	
Scale : 1:150 @ A3	
Date: 22 AUGUST 2019	
Dwg No: 144169-DISC-1/79	

Koplick Developments Pty Ltd

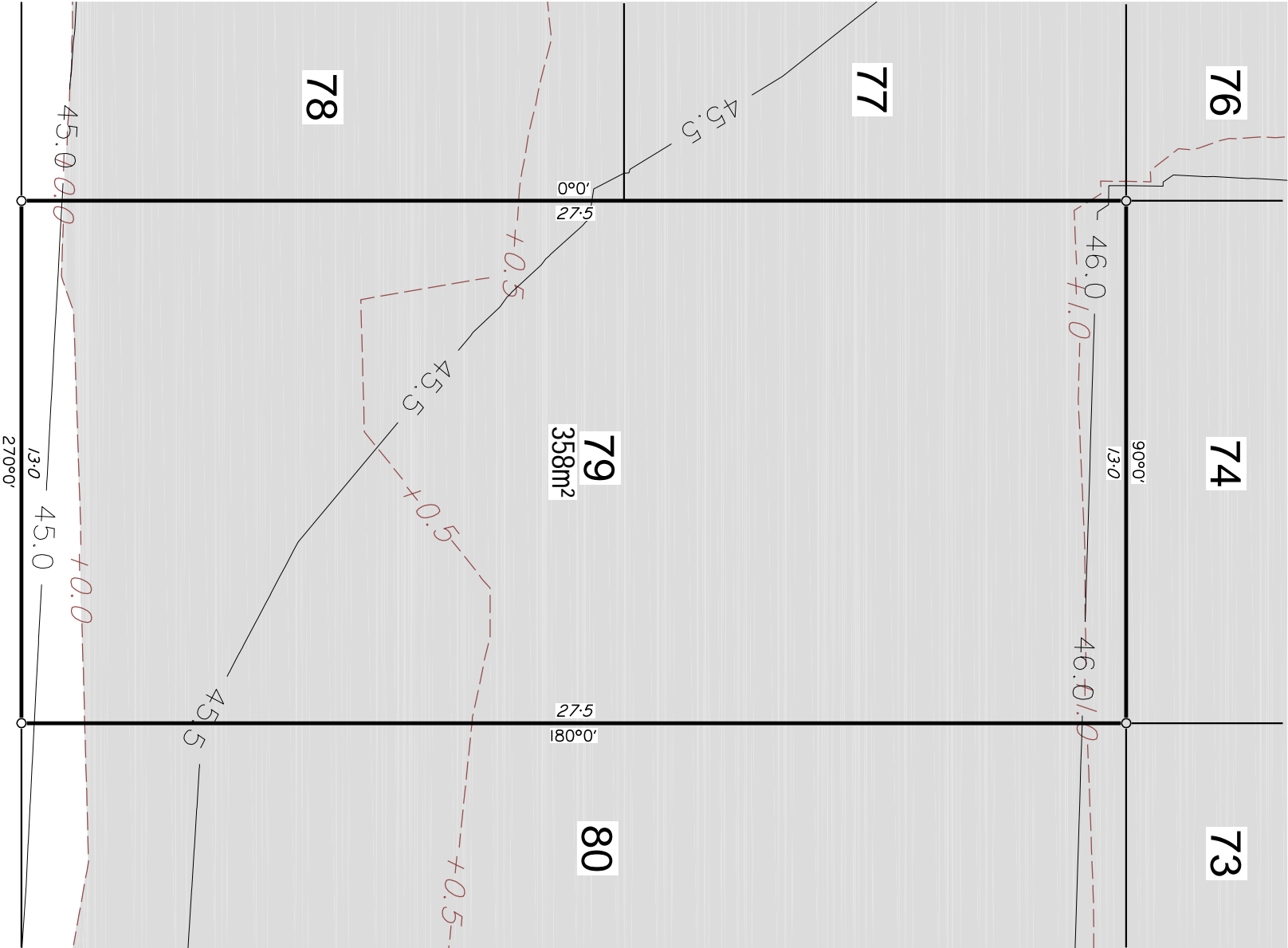


RPS Australia East Pty Ltd
ACN 140 292 762
ABN 44 140 292 762

Lakeside Corporate Space, Suite 425, Level 2
Building 4, 34-36 Glenferrie Drive,
Rothina PO Box 1048 Rothina DC, Qld 4226

T +61 7 555 36900
F +61 7 555 36999
W rpsgroup.com

©COPYRIGHT PROTECTS THIS PLAN
Unauthorized reproduction or amendment
not permitted. Please contact the author.



ROAD NAME

Note:

This plan has been prepared by RPS Australia East Pty Ltd (ACN 140 292 762), which is registered with the Surveyors Board of Queensland as a Cadastral Surveyor.

DISCLOSURE PLAN

FOR PROPOSED LOT 80

Proposed Lot 80 is currently described as part of Lot 15 on RP899708 situated at Koplick Road, Park Ridge.

LEGEND

- +6.0--- DESIGN FILL CONTOUR (0.5m INTERVAL)
- 10.0--- DESIGN F.S.L. SURFACE LEVEL CONTOUR (0.5m INTERVAL)
- AREA OF FILL
- FOR RETAINING WALL CONSTRUCTION DETAIL
- SEE ENGINEERING CIVIL O.P.W. PLANS

Builders Note:

Builders shall not build off the design levels shown: a site survey is required. This note is an integral part of this plan.

Engineering Note:

Engineering design information supplied by PeakUrban. August 2019.

Compaction Statement:

All earthworks shall be undertaken in accordance with AS3798:2007 and local authority requirements, including Level 1 supervision.



NOTE: ALL AREAS AND DIMENSIONS ARE SUBJECT TO FINAL SURVEY

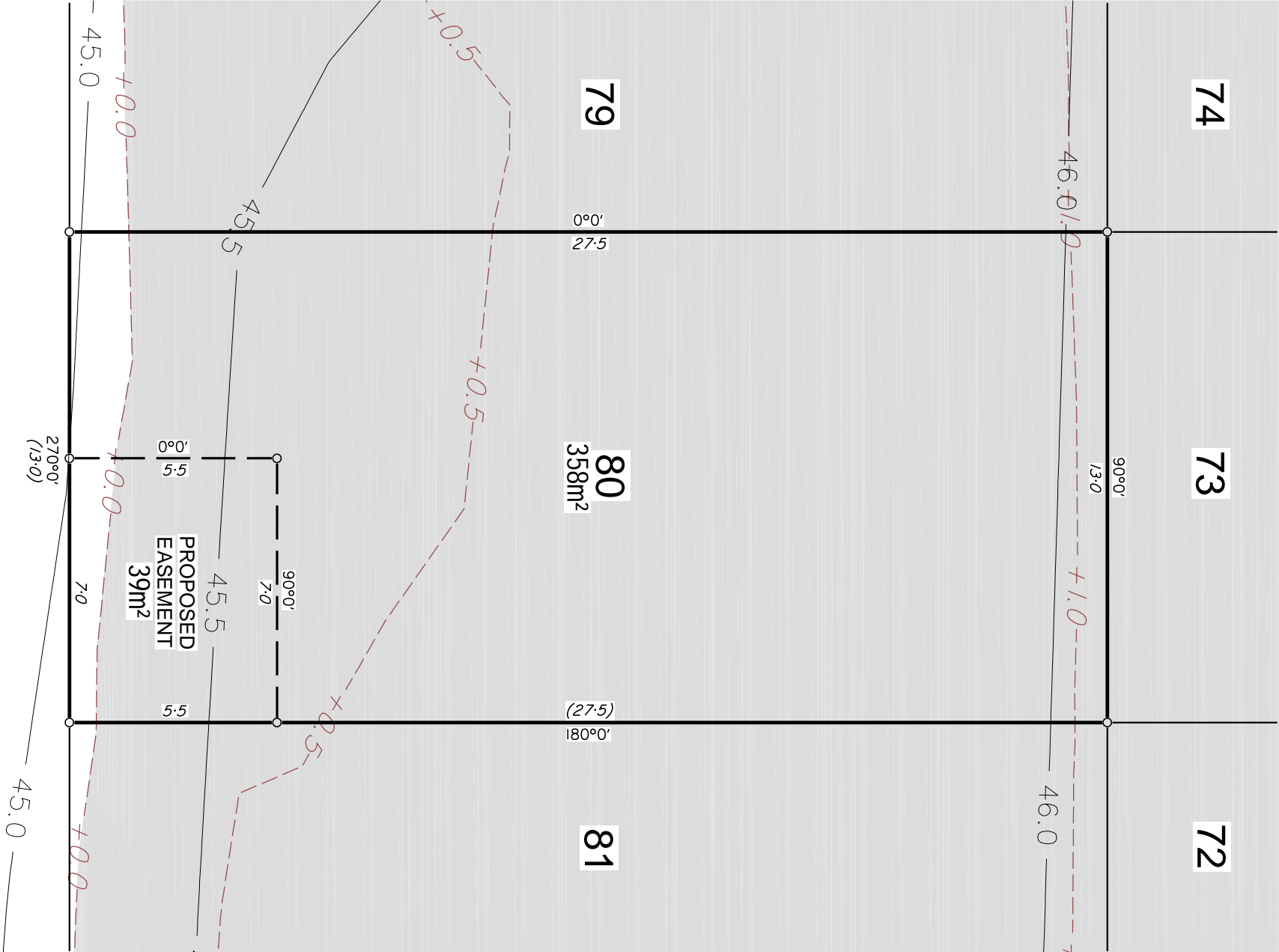
Local Authority : Logan City	
Height Datum : AHD	
Height Origin: PM153245 RL 42.221	
Contour Interval : 0.5 m	
Horizontal Meridian: MGA (Zone 56)	
ENG : Disclosure Info_20190808	
BDY : 138567 Bdy (2019-08-22)	
Surveyor: RPS GC	
Drawn : BJB	
Scale : 1:150 @ A3	
Date: 22 AUGUST 2019	
Dwg No: 144169-DISC-1/80	

Koplick Developments Pty Ltd



RPS Australia East Pty Ltd
ACN 140 292 762
ABN 44 140 292 762
Lakeside Corporate Space, Suite 425, Level 2
Building 4, 34-36 Glenferrie Drive,
Rothina PO Box 1048 Rothina DC, Qld 4226
T +61 7 555 36900
F +61 7 555 36999
W rpsgroup.com

©COPYRIGHT PROTECTS THIS PLAN
Unauthorized reproduction or amendment
not permitted. Please contact the author.



ROAD NAME

Note:
This plan has been prepared by RPS Australia East Pty Ltd (ACN 140 292 762), which is registered with the Surveyors Board of Queensland as a Cadastral Surveyor.

DISCLOSURE PLAN

FOR PROPOSED LOT 81

Proposed Lot 81 is currently described as part of Lot 15 on RP899708 situated at Koplick Road, Park Ridge.

LEGEND

- +6.0--- DESIGN FILL CONTOUR (0.5m INTERVAL)
- 10.0--- DESIGN F.S.L. SURFACE LEVEL CONTOUR (0.5m INTERVAL)
- AREA OF FILL
- FOR RETAINING WALL CONSTRUCTION DETAIL
- SEE ENGINEERING CIVIL O.P.W. PLANS

Builders Note:

Builders shall not build off the design levels shown; a site survey is required. This note is an integral part of this plan.

Engineering Note:

Engineering design information supplied by PeakUrban. August 2019.

Compaction Statement:

All earthworks shall be undertaken in accordance with AS3798:2007 and local authority requirements, including Level 1 supervision.



NOTE: ALL AREAS AND DIMENSIONS ARE SUBJECT TO FINAL SURVEY

Local Authority : Logan City	
Height Datum : AHD	
Height Origin: PM153245 RL 42.221	
Contour Interval : 0.5 m	
Horizontal Meridian: MGA (Zone 56)	
ENG : Disclosure Info_20190808	
BDY : 138567 Bdy (2019-08-22)	
Surveyor: RPS GC	
Drawn : BJB	
Scale : 1:150 @ A3	
Date: 22 AUGUST 2019	
Dwg No: 144169-DISC-1/81	

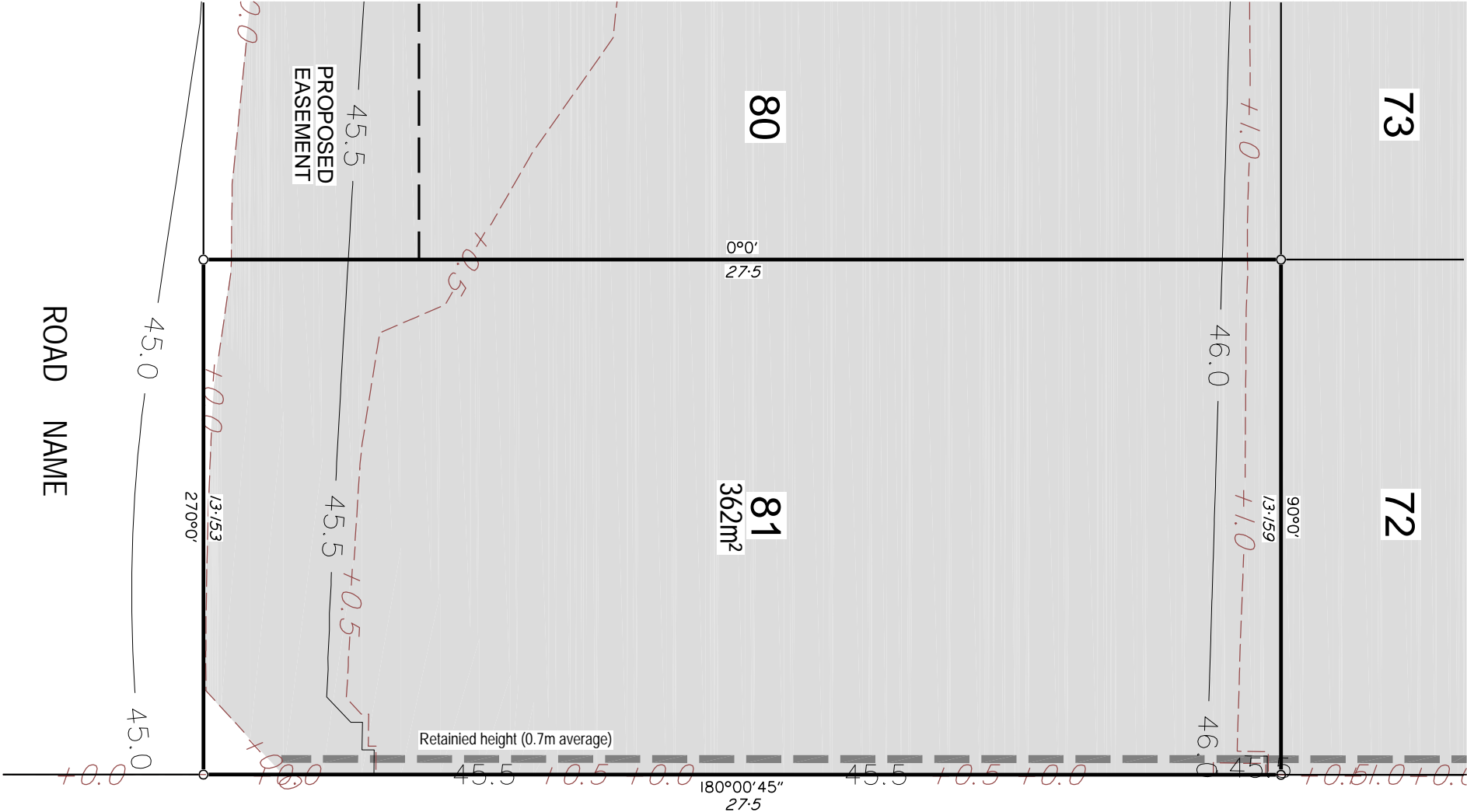
Koplick Developments Pty Ltd



RPS Australia East Pty Ltd
ACN 140 292 762
ABN 44 140 292 762
Lakeside Corporate Space, Suite 425, Level 2
Building 4, 34-36 Glenferrie Drive,
Rothina PO Box 1048 Rothina DC, Qld 4226

T +61 7 555 36900
F +61 7 555 36999
W rpsgroup.com

©COPYRIGHT PROTECTS THIS PLAN
Unauthorized reproduction or amendment
not permitted. Please contact the author.



Note:
This plan has been prepared by RPS Australia East Pty Ltd (ACN 140 292 762), which is registered with the Surveyors Board of Queensland as a Cadastral Surveyor.