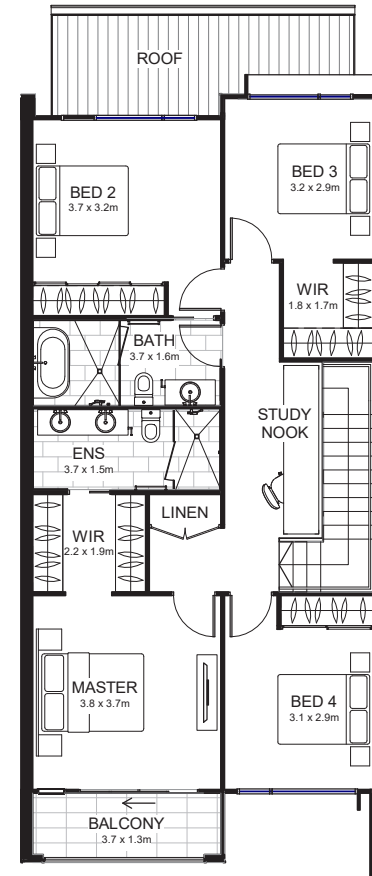
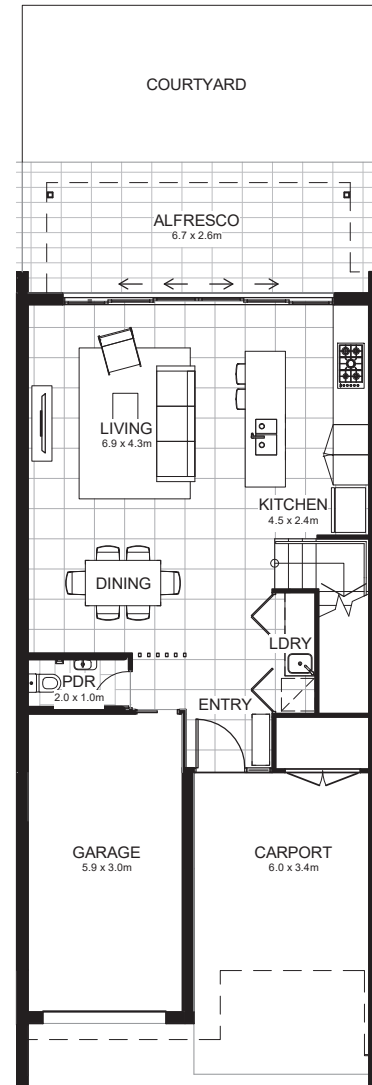




U R B A N A

R E S I D E N C E S

FOXWELL ROAD | COOMERA



23sq

MADEIRA

4 2 2

HOME AREAS

Home Area 82.4m²

BEDROOMS (incl. robes)

Master Suite 26.7m²

Bed 2 15.5m²

Bed 3 13.9m²

Bed 4 12.2m²

CARPARKING

Garage 19.9m²

Carport 22.2m²

OUTDOOR

Alfresco 19.0m²

Balcony 5.2m²

TOTAL AREA

217.0m²

The information contained in this document is given for general information purposes only. The final dimensions of any apartment sold will be determined by the contract of sale and may differ from the depicted. All particulars herein whether by description of visual representation are for general information only, and do not constitute any representation by the vendor or by its agents or representatives. Changes will undoubtedly be made during development, and the dimensions, fittings, finishes and specifications are therefore subject to change. No warranty is given either expressly or implied, and all interested parties should not rely on the information contained herein and should make their own enquiries before committing to any purchase.