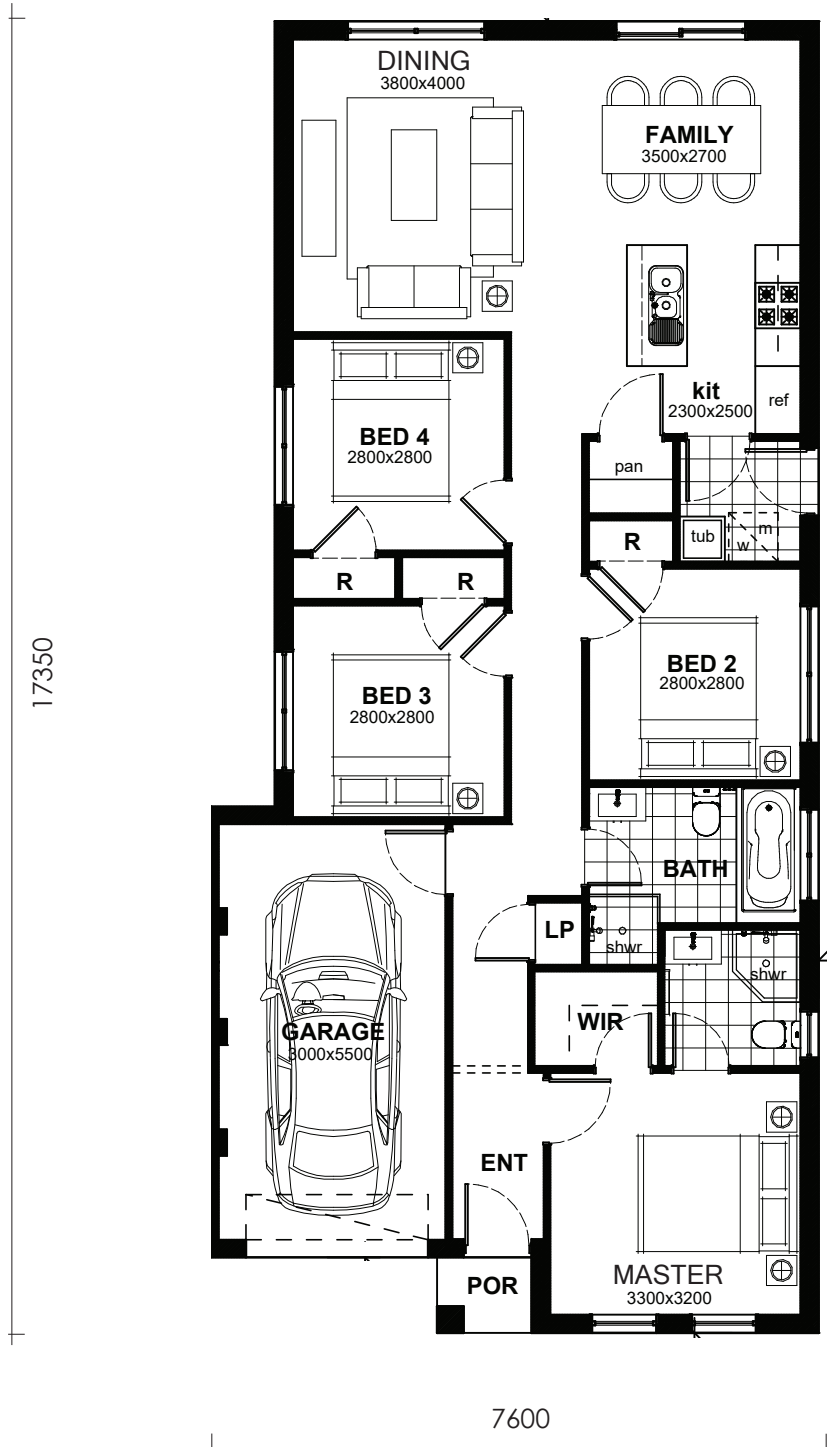




**Brolen Homes**

**SANTA MONICA 4 - AREAS**

MINIMUM FRONTAGE:	9.00 m
GROUND FLOOR:	108.30 m <sup>2</sup>
GARAGE:	18.00 m <sup>2</sup>
PORCH:	1.60 m <sup>2</sup>
TOTAL	127.9 m <sup>2</sup>
SQUARES:	13.77



**SANTA MONICA 4**